

TM 11-6760-228-34P-1

TECHNICAL MANUAL

**DIRECT SUPPORT, AND GENERAL SUPPORT MAINTENANCE
REPAIR PARTS AND SPECIAL TOOLS LISTS
(INCLUDING DEPOT MAINTENANCE REPAIR PARTS AND SPECIAL TOOLS)**

FOR

**FLASHER SYSTEM, PHOTOGRAPHIC AIRCRAFT LS-59A
(NSN 6760-00-910-3802)**

**HEADQUARTERS, DEPARTMENT OF THE ARMY
JANUARY 1978**

TECHNICAL MANUAL
 No. 11-6760-228-34P-2

**HEADQUARTERS
 DEPARTMENT OF THE ARMY
 WASHINGTON, DC, 8 January 1978**

**DIRECT SUPPORT AND GENERAL SUPPORT MAINTENANCE
 REPAIR PARTS AND SPECIAL TOOLS LISTS
 (INCLUDING DEPOT MAINTENANCE REPAIR PARTS AND SPECIAL TOOLS)
 FOR**

**FLASHER SYSTEM, PHOTOGRAPHIC AIRCRAFT LS-59A
 (NSN 6760-00-910-3802)**

Current as of 16 September 1977

REPORTING OF ERRORS

You can improve this manual by recommending improvements using DA Form 2028-2 (Test) located in the back of the manual. Simply tear out the self-addressed form, fill it out as shown on the sample, fold it where shown, and drop it in the mail.

If there are no blank DA Form 2028-2 (Test) in the back of your manual, use the standard DA Form 2028 (Recommended Changes to Publications and Blank Forms) and forward to the Commander, US Army Electronics Command, ATTN: DRSEL-MA-Q, Fort Monmouth, New Jersey 07708.

In either case a reply will be furnished direct to you.

Table of Contents

	Page	Illus. Figure
SECTION I. Introduction	1	
II. Repair parts list	5	
GROUP 00. Flasher System, Photographic Aircraft LS-59A	5	1
01. Cable Assembly LA-390A (A1W1)	7	2
02. Case, carrying LA-389A (A1A1)	9	3
03. Control Box LA-394A (A1A2)	11	4
04. Cover Assembly LA-391A (A1A3)	13	5
05. Cradle, Carrying LA-369A (A1A4)	15	6
06. Pod Assembly LA-388A (A1A5)	17	7-9
0601. Illuminator module assemblies (A1A5A3), (A1A5A4), A1A5A5)	25	10,11
060101. Component board assemblies (A1A5A3A4), (A1A5A4A4), (A1A5A5A4) ..	31	12
060102. Reflector assemblies (A1A5A3A8), (A1A4A4A8), (A1A5A5A8)	33	13
0602. Power Supply assembly (A1A5A2)	37	14,15
060201. Logic board assembly (A1A5A2A2)	45	16
060202. Voltage control board assembly (A1A5A2A3)	49	17
060203. Rectifier assembly (A1A5A2A1)	53	18
060204. SCR control assembly (A1A5A2MP01)	56	19
060205. Rate limit/primary power disconnect board assembly (A1A5A2)	57	20-22
GROUP 0603 Turbine alternator (A1A5A1) (No parts authorized)		
SECTION III. Special tools list (Not applicable)	62	
IV. National stock number and part number index		

*This manual supersedes so much of TM 11-6760-228-34-1, 26 February 1960, including all changes in parts to repair parts and special tools list.

SECTION I
INTRODUCTION

1. Scope

This manual lists spares and repair parts; special tools; special test, measurement, and diagnostic equipment (TMDE), and other special support equipment required for performance of direct support and general support maintenance of the LS-59A. It authorizes the requisitioning and issue of spares and repair parts as indicated by the source and maintenance codes.

2. General

This Repair Parts and Special Tools List is divided into the following sections:

a. Section II. Repair Parts List. A list of spares and repair parts authorized for use in the performance of maintenance. The list also includes parts which must be removed for replacement of the authorized parts. Parts lists are composed of functional groups in numeric sequence, with the parts in each group listed in figure and item number sequence.

b. Section III. Special Tools List. Not applicable.

c. Section IV. National Stock Number and Part Number Index. A list, in National item identification number (NIIN) sequence, of all National stock numbers (NSN) appearing in the listings, followed by a list, in alphameric sequence, of all part numbers appearing in the listings. National stock numbers and part numbers are cross-referenced to each illustration figure and item number appearance.

3. Explanation of Columns

a. Illustration. This column is divided as follows:

(1) Figure number. Indicates the figure number of the illustration on which the item is shown.

(2) Item number. The number used to identify item called out in the illustration.

b. Source, **Maintenance**, and Recoverability (SMR) Codes.

(1) Source code. Source codes indicate the manner of acquiring support items for maintenance, repair, or overhaul of end items. Source codes are entered in the first and second positions of the Uniform SMR Code format as follows:

Code	Definition
PA--	Item procured and stocked for anticipated or known usage .
XD--	A support item that is not stocked. When re-

quired, item will be procured through normal supply channels.

NOTE

Cannibalization or salvage may be used as a source of supply for any items source coded above except those coded XA and aircraft support items as restricted by AR 700-42.

(2) Maintenance code. Maintenance codes are assigned to indicate the levels of maintenance authorized to USE and REPAIR support items. The maintenance codes are entered in the third and fourth positions of the Uniform SMR Code format as follows:

(a) The maintenance code entered in the third position will indicate the lowest maintenance level authorized to remove, replace, and use the support item. The maintenance code entered in the third position will indicate one of the following levels of maintenance:

Code	Application/Explanation
O--	Support item is removed, replaced, used at the organizational level.
F--	Support item is removed, replaced, used at the direct support level.
H--	Support item is removed, replaced, used at the general support level.
D--	Support items that are removed, replaced, used at depot, mobile depot, specialized repair activity only.

(b) The maintenance code entered in the fourth position indicates whether the item is to be repaired and identifies the lowest maintenance level with the capability to perform complete repair (i.e.; all authorized maintenance functions). This position will contain one of the following maintenance codes:

Code	Application/Explanation
F--	The lowest maintenance level capable of complete repair of the support item is the direct support level.
H--	The lowest maintenance level capable of complete repair of the support item is the general support level.
D--	The lowest maintenance level capable of complete repair of the support item is the depot level.
Z--	Nonreparable. No repair is authorized.

(3) Recoverability code. Recoverability codes are assigned to **support** items to indicate the disposition

action on unserviceable items. The recoverability code is entered in the fifth position of the Uniform SMR Code format as follows:

Recoverability codes	Definition
Z-Nonreparable item.	When unserviceable, condemn and dispose at the level indicated in position 3.
F-Reparable item.	When uneconomically reparable, condemn and dispose at the direct support level.
H-Reparable item.	When uneconomically reparable, condemn and dispose at the general support level.
D-Reparable item.	When beyond lower level repair capability, return to depot. Condemnation and disposal not authorized below depot level.
L-Reparable item.	Repair, condemnation, and disposal not authorized below depot/specialized repair activity level.

c. National Stock Number. Indicates the National stock number assigned to the item and will be used for requisitioning purposes.

d. Part Number. Indicates the primary number used by the manufacturer (individual, company, firm, corporation, or Government activity), which controls the design and characteristics of the item by means of its engineering drawings, specifications, standards, and inspection requirements to identify an item or range of items.

NOTE

When a stock numbered item is requisitioned, the repair part received may have a different part number than the part being replaced.

e. Federal Supply Code for Manufacturer (FSCM). The FSCM is a 5-digit numeric code listed in SB708-42 which is used to identify the manufacturer, distributor, or Government agency, etc.

f. Description. Indicates the Federal item name and, if required, a minimum description to identify the item.

g. Unit of Measure (U/M). Indicates the standard of the basic quantity of the listed item as used in performing the actual maintenance function. This measure is expressed by a two-character alphabetical abbreviation (e.g., ea, in, pr, etc). When the unit of measure differs from the unit of issue, the lowest unit of issue

that will satisfy the required units of measure will be requisitioned.

h. Quantity Incorporated in Unit. Indicates the quantity of the item used in the breakout shown on the illustration figure, which is prepared for a functional group, subfunctional group, or an assembly.

4. Special Information

The following publication pertains to the LS-59A and its components:

- TM 11-6760-228-12, Flasher System, Photographic Aircraft LS-59A
- TM 11-6760-228-20P-1, Flasher System, Photographic Aircraft LS-59A
- TM 11-6760-228-35-1, Flasher System, Photographic Aircraft LS-59A

5. How to Locate Repair Parts

a. When National stock number or part number is unknown.

(1) **First.** Using the table of contents, determine the functional group within which the **item belongs**. This is necessary since illustrations are **prepared for functional groups and listings are divided into the same groups**.

(2) **Second.** Find the illustration covering the **functional group to which the item belongs**.

(3) **Third.** Identify the item on the illustration and **note the illustration figure and item number of the item**.

(4) **Fourth.** Using the Repair Parts Listing, find the **figure and item number noted on the illustration**.

b. When National stock number or part number is known.

(1) **First.** Using the Index of National Stock Numbers and Part Numbers, find the **pertinent National stock number or part number. This index is in NIIN sequence followed by a list of part numbers in alphameric sequence, cross-referenced to the illustration number and item number**.

(2) **Second.** After finding the figure and item number, **locate the figure and item number in the repair parts list**.

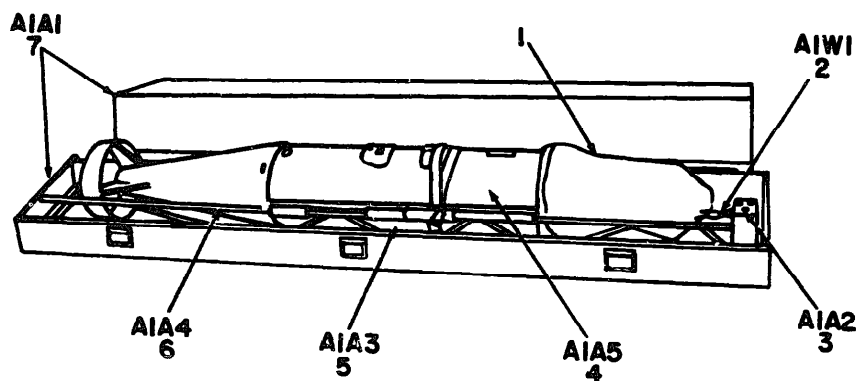
6. Abbreviations

Not applicable.

(Next printed page is 4)

REF. DES.	ITEM NO.
H1	8
H2	8

ITEMS LISTED BUT
NOT SHOWN.



EL2JY001

Figure 1. Flasher System, Photographic Aircraft LS-59A.

SECTION II

TM 11-6760-228-34P-1

(1) ILLUSTRATION		(2) SMN CODE	(3) NATIONAL STOCK NUMBER	(4) PART NUMBER	(5) FSCN	(6) DESCRIPTION	(7) U/M	(8) QTY INC IN UNIT
(a) FIG NO	(b) ITEM NO						U/M	UNIT
GROUP 00 FLASHER SYSTEM, PHOTOGRAPHIC, AIRCRAFT LS-59A						USABLE ON CODE		
1	1	PAOZZ	6760-00-878-5354	LA-392A	80058	COVER, STORAGE, TURBINE-ALTERNATOR	EA	1
1	2	PAFFF	5995-00-999-4376	LA-390A	80058	CABLE ASSEMBLY, SPECIAL PURPOSE, ELECTRICAL	EA	1
1	3	PAFFF	6760-00-878-5355	LA-394A	80058	CONTROL BOX ASSEMBLY	EA	2
1	4	XDOHH		LA-388A	80058	FOD ASSEMBLY	EA	1
1	5	PAFFF	6760-00-878-5364	LA-391A	80058	COVER ASSEMBLY, PROTECTIVE	EA	1
1	6	XDOFF		LA-359A	80058	CRADLE, CARRYING	EA	1
1	7	XDOHH		LA-389A	80058	CASE, CARRYING	EA	1
1	8	PAHZZ	5961-00-992-3492	140A601G16	89661	KIT, HARDWARE	EA	2

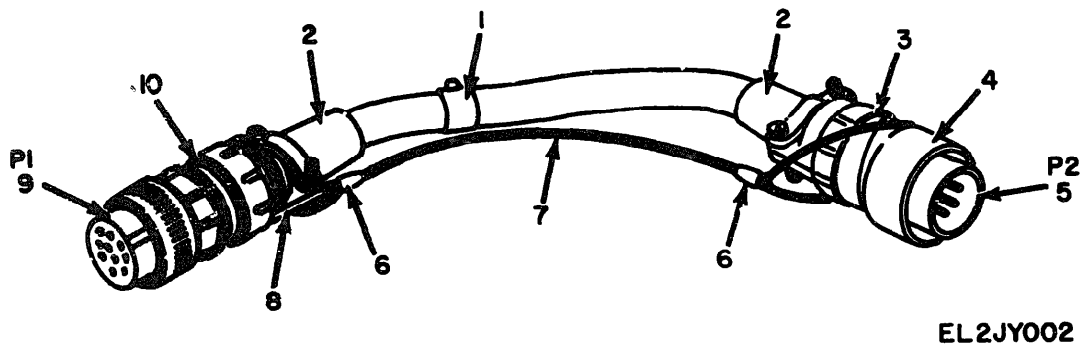
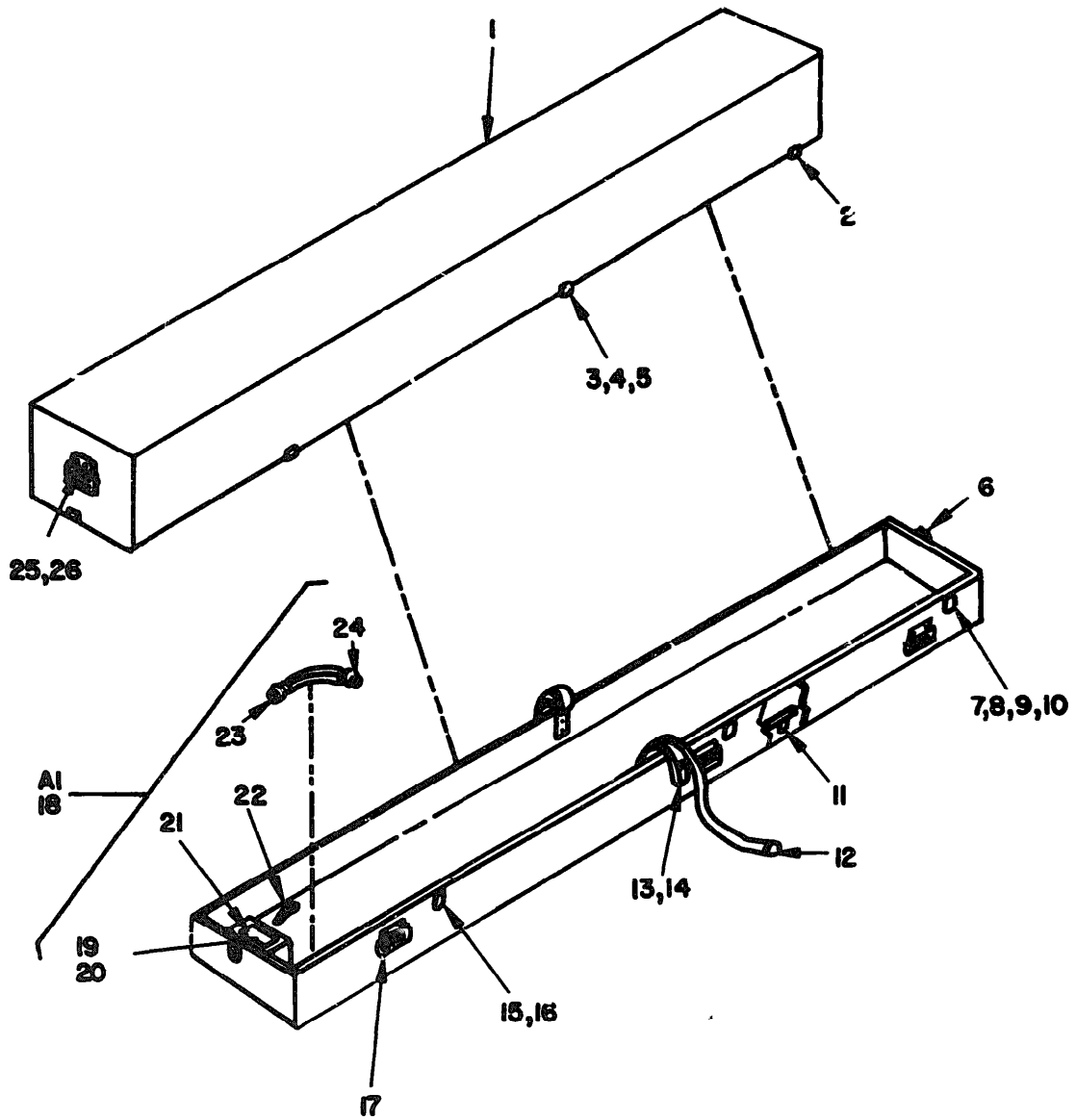


Figure 2. Cable Assembly LA-390A (A1W1).

SECTION II

TM 11-6760-228-34P-1

(1) ILLUSTRATION		(2)	(3)	(4)	(5)	(6) DESCRIPTION	(7)	(8)
(a) FIG NO.	(b) ITEM NO.	BAR CODE	NATIONAL STOCK NUMBER	PART NUMBER	FSCN	U/M/LE ON CODE	U/M	QTY INC IN UNIT
GROUP 01 CABLE ASSEMBLY LA-390A (A1W1)								
2	1	XDFZZ		CAV176-318	11871	BAND, MARKER	EA	1
2	2	PAFZZ	5365-00-598-5287	AN3420-12A	C8044	BUSH, RUBBER	EA	2
2	3	PAFZZ	5940-00-722-4351	YMC120	09922	FERRULE, RADIO FREQUENCY CABLE, GROUNDING	EA	1
2	4	PAFZZ	5935-00-520-5334	LDDP20	79326	LANYARD, PLUG	EA	1
2	5	PAFZZ	5935-00-494-5133	S6310GE20-33SSR	77820	CONNECTOR, PLUG, ELECTRICAL	EA	1
2	6	PAFZZ	4030-00-431-5536	28-1C	76691	CLIP	EA	2
2	7	PAFZZ	5975-00-727-5153	SSFL	06383	STRAP, LINE SUPPORT	EA	1
2	8	XDFZZ		7148-245	11871	PLATE, RETAINER	EA	1
2	9	PAFZZ	5935-00-494-9000	S6310GE20-33PSR	77820	CONNECTOR, PLUG, ELECTRICAL	EA	1
2	10	PAFZZ	5940-00-553-2782	YMC115	09922	FERRULE, RADIO FREQUENCY CABLE, GROUNDING	EA	1



NOTE:
FOR COMPLETE REFERENCE DESIGNATION
PREFIX WITH A1A1.

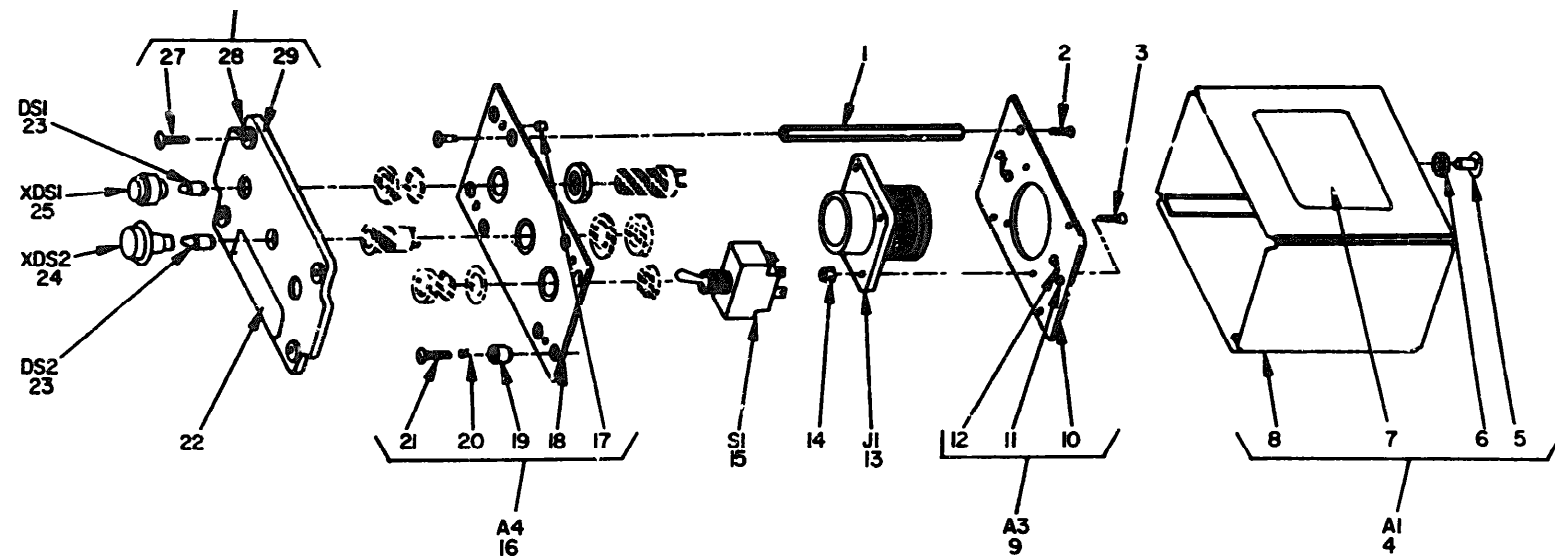
EL2JY003

Figure 3. Case, Carrying LA-389A (A1W1).

SECTION II

TM 11-6760-228-34P-1

(1) ILLUSTRATION		(2)	(3)	(4)	(5)	(6)	(7)	(8)
(a) FIG NO	(b) ITEM NO	SMR CODE	NATIONAL STOCK NUMBER	PART NUMBER	FSCM	DESCRIPTION	USABLE ON CODE	QTY INC IN UNIT
GROUP 02 CASE, CARRYING LA-389A (A1A1)								
3	1	XDFHM		7148-190-1	11871	CASE, CARRYING		EA 1
3	2	XDHZZ		VHC250-355-CE1	98003	CATCH		EA 8
3	3	XDHZZ		79NTE048	72962	NUT, SELF-LOCKING HEXAGON		EA 16
3	4	XDHZZ		MS35493-93	96906	SCREW, WOOD		EA 16
3	5	XDFZZ		CAV10-84P	11871	WASHER, FLAT		EA 16
3	6	XDHZZ		MS250-495-CE1	98003	STRIKE		EA 8
3	7	XDHZZ		2599-416C75G	11871	SCREW, MACHINE		EA 40
3	8	XDFZZ		CAV10-69P	11871	WASHER, FLAT		EA 40
3	9	XDFZZ		CAV10-53P	11871	WASHER, FLAT		EA 12
3	10	XDHZZ		79NTH04	72962	NUT, SELF-LOCKING, HEXAGON		EA 40
3	11	XDHZZ		7148-241	11871	PLATE		EA 2
3	12	PAHZZ	5340-00-775-0200	C1	06229	STRAP		EA 2
3	13	XDHZZ		CAV70-8-18P	11871	SCREW, MACHINE		EA 4
3	14	PAHZZ	5310-00-880-5978	MS15795-807	96906	WASHER, FLAT		EA 4
3	15	PAFZZ	5307-00-485-0985	7148-191	11871	STUD		EA 6
3	16	XDHZZ		79NTH02	72962	NUT, SELF-LOCKING, HEXAGON		EA 46
3	17	XDHZZ		HP4SL1RS	98003	HANDLE		EA 8
3	18	XDFHM		7148-192	11871	BRACKET ASSEMBLY		EA 1
3	19	XDFZZ		CAV10-52P	11871	WASHER, FLAT		EA 12
3	20	XDHZZ		MS35276-87	96906	SCREW, MACHINE		EA 9
3	21	XDHZZ		7148-192-1	11871	BRACKET		EA 1
3	22	PAHZZ	5360-00-508-5934	S3-159	72794	LOCK SPRING, TURNLOCK FASTENER		EA 4
3	23	XDFZZ		NAS1465-056-12C	80205	CLIP		EA 1
3	24	PAHZZ	5975-00-705-5841	N3	06229	CLIP, CABLE		EA 2
3	25	XDHZZ		CAV70-8-20P	11871	SCREW, MACHINE		EA 40
3	26	XDFZZ		CAV10-164P	11871	WASHER, FLAT		EA 46



NOTE:
FOR COMPLETE REFERENCE DESIGNATION PREFIX WITH A1A2.

EL2JY004

Figure 4. Control Box LA-394A (A1A2).

SECTION II

TM 11-6760-228-34P-1

(1) ILLUSTRATION		(2)	(3)	(4)	(5)	(6)	(7)	(8)
(a) FIG NO.	(b) ITEM NO.	SNR CODE	NATIONAL STOCK NUMBER	PART NUMBER	FSC#	DESCRIPTION	USABLE CN CODE	QTY INC IN UNIT
GROUP 03 CONTROL BOX LA-394A (A1A2)								
4	1	XDFZZ		7148-302	1187	POST,TAPPED		EA 4
4	2	XDFZZ		CAV73CA-6G	11871	SCREW,MACHINE		EA 8
4	3	XDFZZ		CAV73CA-7R	11871	SCREW,MACHINE		EA 4
4	4	XDFFF		7049-206	11871	COVER ASSEMBLY		EA 1
4	5	PAFZZ	5325-00-282-8138	AJ3-25	72794	STUD,TURNOCK FASTENER		EA 2
4	6	PAFZZ	5325-00-275-4480	GA3-200	72794	EYELET TURNOCK FASTENER		EA 2
4	7	XDFZZ		7140-215-1	11871	PLATE,IDENTIFICATION		EA 1
4	8	XDFZZ		7049-206-1	11871	COVER		EA 1
4	9	XDFFF		7148-303	11871	PLATE ASSEMBLY		EA 1
4	10	XDFZZ		7148-303-1	11871	PLATE,REAR		EA 1
4	11	XDFZZ		MS20470A3-3	96906	RIVET,SOLID		EA 4
4	12	PAFZZ	5325-00-171-4680	S3-175	72794	LOCKSPRING,TURNOCK FASTENER		EA 2
4	13	PAFZZ	5935-00-721-0496	MS3102R22-14P	96906	CONNECTOR,RECEPTACLE,ELECTRICAL		EA 1
4	14	PAFZZ	5310-00-285-7085	MS20365-440A	96906	NUT,PLAIN,HEXAGON		EA 4
4	15	PAFZZ	5930-00-655-1575	MS35059-22	96906	SWITCH,TOGGLE		EA 1
4	16	XDFZZ		7148-304	11871	PLATE ASSEMBLY		EA 1
4	17	PAFZZ	5310-00-027-7247	79RCFM2-62	72962	NUT,SELF-LOCKING,HEXAGON		EA 4
4	18	XDFZZ		7148-304-1	11871	PLATE,FRONT		EA 1
4	19	PAFZZ	5325-00-291-9360	PC3 1-2	72794	RETAINER,TURNOCK FASTENER EJECTOR SPRING		EA 4
4	20	PAFZZ	5360-00-201-0272	PS3 1-2	72794	SPRING,TURNOCK FASTENER		EA 4
4	21	PAFZZ	5325-00-543-2418	PF3 1-2-38	72794	STUD,TURNOCK FASTENER		EA 4
4	22	XDFZZ		7148-307	11871	PLATE,INSTRUCTION		EA 1
4	23	PAQZZ	6240-00-155-7836	MS25237-327	96906	LAMP,INCANDESCENT		EA 2
4	24	PAFZZ	6210-00-965-1491	MS25010C11B327	96906	LIGHT,PANEL		EA 1
4	25	PAFZZ	6210-00-284-0289	MS25041-4	96906	LIGHT,INDICATOR		EA 1
4	26	XDFZZ		7148-305	11871	PANEL ASSEMBLY		EA 1
4	27	XDFZZ		6-32X9-16 SL HD	70318	SCREW,WASHER HEAD		EA 4
4	28	XDFZZ		MS25381-1	96906	GROMMET,METALLIC		EA 4
4	29	XDFZZ		7148-305-1	11871	PANEL,CONTROL		EA 1

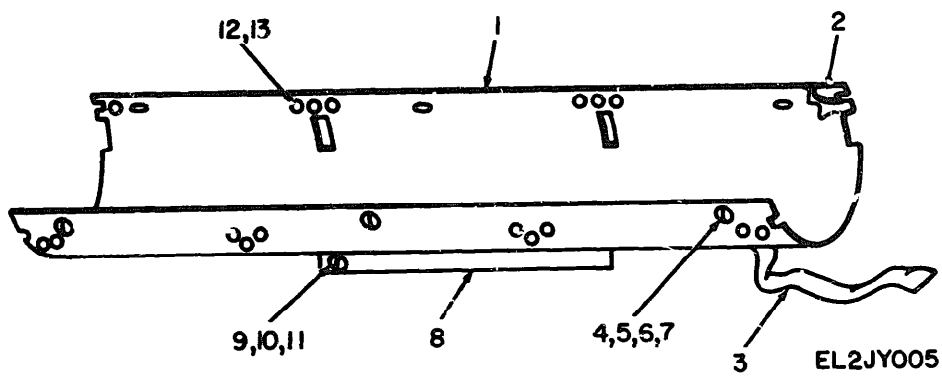
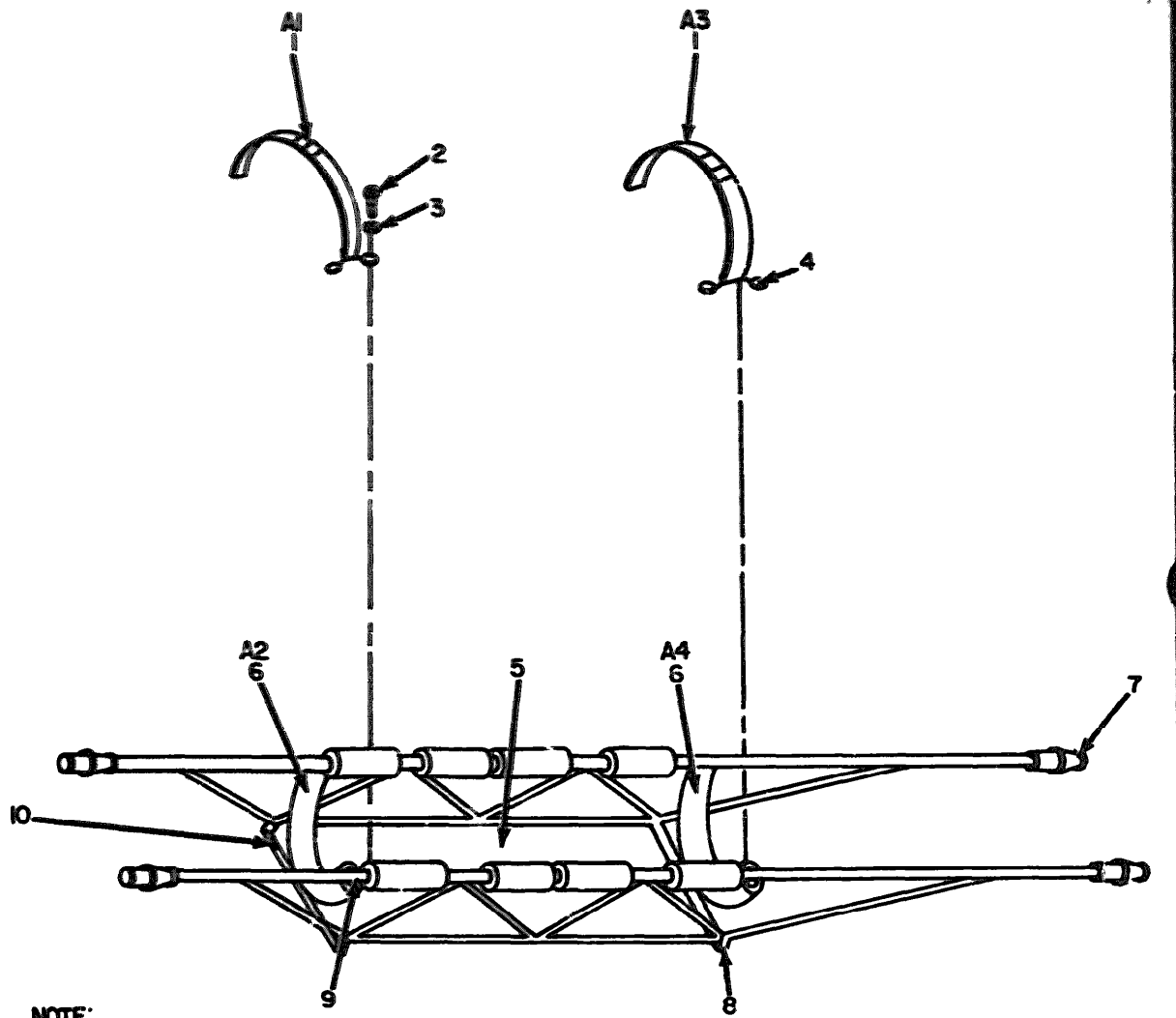


Figure 5. Cover Assembly LA-391A (A1A3).

SECTION II

TM 11-6760-228-34P-1

(1) ILLUSTRATION		(2)	(3)	(4)	(5)	(6) DESCRIPTION	(7)	(8)
(a) FIG. NO.	(b) ITEM NO.	QTY	NATIONAL STOCK NUMBER	PART NUMBER	FORM	TABLE OR CODE	UNIT	QTY
GROUP 04 COVER ASSEMBLY LA-391A (A1A3)								
5	1	XDFZZ		FL48-157-1	ELB7E	COVER	EA	1
5	2	PAFZZ	5355-00-486-3399	7148-157-5	ELB7E	W/UB	EA	6
5	3	XDFZZ		AE85-230	ELB7E	STREAMFR	EA	1
5	4	XDFZZ		7148-157-3	ELB7E	FASTENER	EA	6
5	5	PAFZZ	5315-00-584-0251	MS14562-198	96906	PEN & SPRING	EA	6
5	6	XDFZZ		7148-157-7	ELB7E	GASKET	EA	10
5	7	XDFZZ		CAV10-77P	ELB7E	WASHER, FLAT	EA	6
5	8	XDFZZ		348-10E	ELB7E	PLATE, INSTRUCTION	EA	1
5	9	XDFZZ		Z2N6T46Z	ELB7E	NUT, SELF-LOCKING, CAP	EA	2
5	10	XDFZZ		CAV7366-5G	ELB7E	SCREW, MACHINE	EA	2
5	11	PAFZZ	5310-00-931-9514	AN9806	96904	WASHER, FLAT	EA	2
5	12	XDFZZ		CAV10-76P	ELB7E	WASHER, FLAT	EA	12
5	13	XDFZZ		3577-16-0E	78205	WASHER, FLAT	EA	12



NOTE:
FOR COMPLETE REFERENCE DESIGNATION PREFIX WITH A1A4.

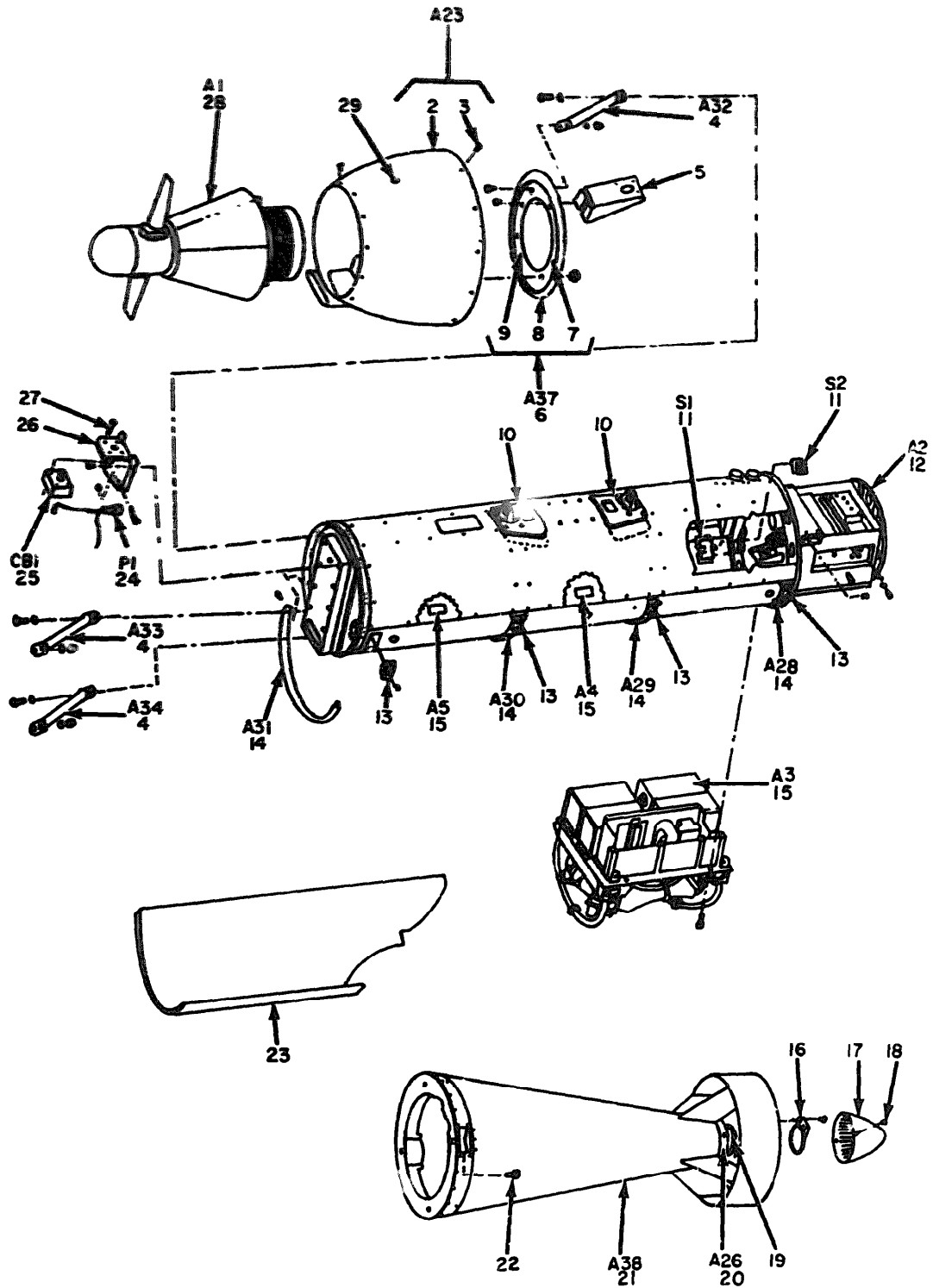
EL2JY006

Figure 6. Cradle, Carrying LA-359A (A1A4).

SECTION II

TM 11-6760-228-34P-1

(1) ILLUSTRATION		(2)	(3)	(4)	(5)	(6) DESCRIPTION	(7)	(8)
QTY	VIEW	QTY	NAT. ORAL	PART	QTY	DESCRIPTION	QTY	UNIT
NO.	NO.	CODE	STOCK	NUMBER	FORM	DESCRIPTION	QTY	UNIT
							USABLE QTY CODE	
GROUP 05 CRADLE, CARRYING LA-395A (A1A4)								
6	1	XDFZZ		7140-165-1	11871	STRAP ASSEMBLY	EA	2
6	2	PAPZZ	5305-00-543-2804	MS35233-69	96906	SCREW, MACHINE	EA	8
6	3	XDFZZ		CAV10-1479	11871	WASHER, FLAT	EA	16
6	4	XDFZZ		7140-182	11871	LOOP, STRAP	EA	4
6	5	XDFZZ		7140-165-2	11871	STRAP ASSEMBLY	EA	2
6	6	XDFZZ		7140-180-1	11871	PLATE	EA	2
6	7	XDFZZ		2109	70405	GRIP	EA	4
6	8	PAPZZ	5325-00-281-8638	MS21332-1	96906	FASTENER	EA	4
6	9	XDFZZ		22NKTMS4	72962	NUT, SELF-LOCKING	EA	8
6	10	XDFZZ		7140-215-2	11871	PLATE, IDENTIFICATION	EA	1



NOTE. FOR COMPLETE REFERENCE
DESIGNATION PREFIX WITH A1A5

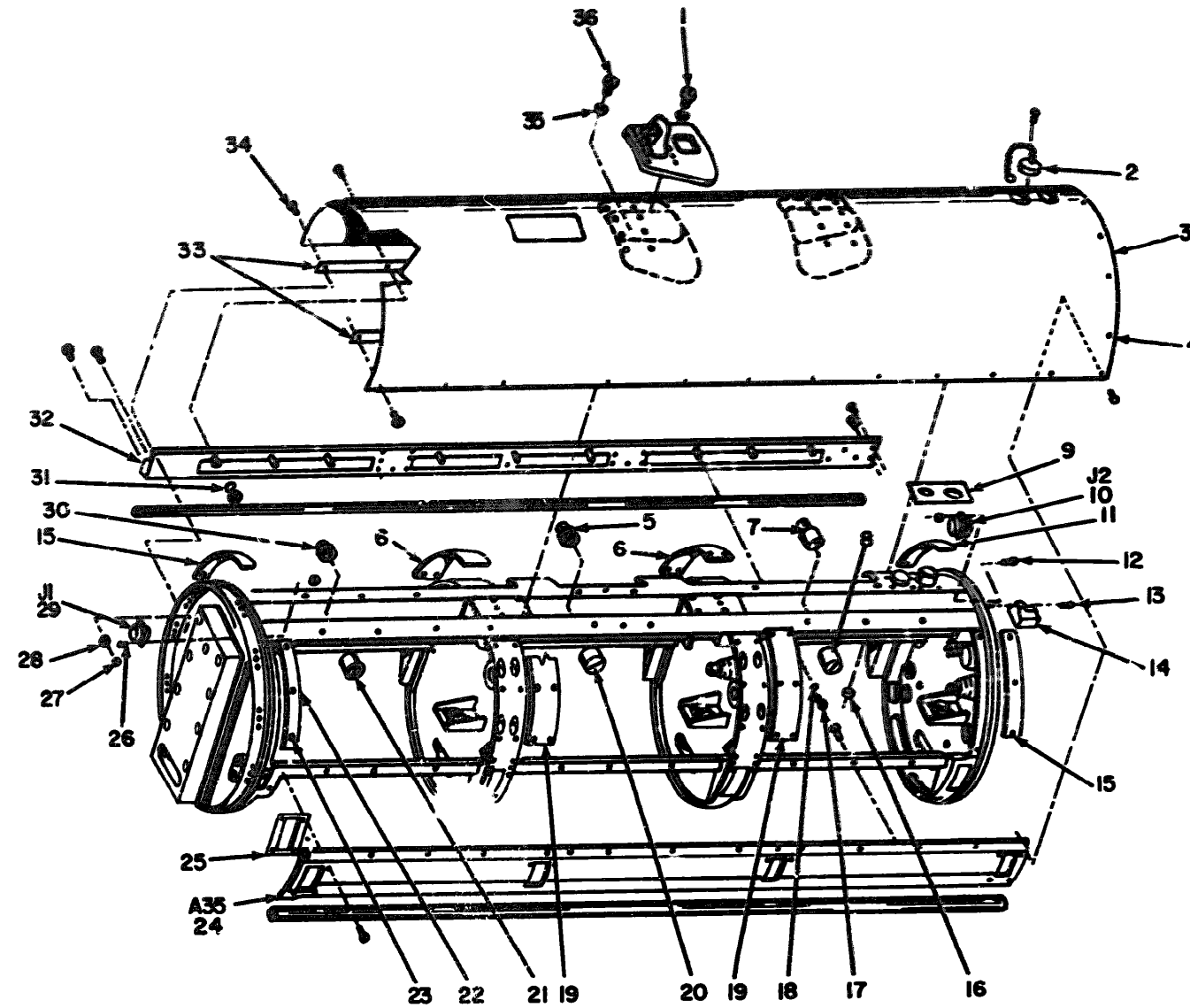
EL2JY007

Figure 7. Pod Assembly LA-388A (A1A5).

SECTION II

TM 11-6760-228-34P-1

(1) ILLUSTRATION		(2)	(3)	(4)	(5)	(6) DESCRIPTION	(7)	(8)
FIG NO.	FIG NO.	QTY	NATIONAL STOCK NUMBER	PART NUMBER	FIGURE		UNIT	QTY
						UNUSABLE QTY CODE	UNIT	QTY
GROUP 06 POD ASSEMBLY LA-388A (A1A5)								
7	1	XDFZZ		7140-134	11071	COVER AND DUCT ASSEMBLY	EA	1
7	2	XDFZZ		7140-134-1	11071	COVER	EA	1
7	3	XDFZZ		80-32XF-16	97539	SCREW	EA	12
7	4	PAFZZ	6760-00-018-7344	7140-133	11071	STRUT ASSEMBLY, ALTERNATOR	EA	3
7	5	XDFZZ		7140-135-2	11071	BRACKET	EA	1
7	6	XDFZZ		7140-132	11071	SUPPORT ASSEMBLY, RIGHT	EA	1
7	7	PAFZZ	5340-00-085-1125	MSL395C08L	00205	INSERT, SCREW 1, READ	EA	11
7	8	XDFZZ		7140-132-1	11071	SUPPORT	EA	1
7	9	PAFZZ	5310-00-167-0864	AN940C610	00044	WASHER, FLAT	EA	5
7	10	XDFZZ		7140-144	11071	LUG, STORES	EA	2
7	11	PAFZZ	5930-00-044-4144	MS10100-5	90906	SWITCH, INTERLOCK	EA	2
7	12	PAFFF	6760-00-176-8967	7140-200	11071	POWER SUPPLY ASSEMBLY	EA	1
7	13	PAFZZ	5340-00-494-2824	7140-151	11071	CATCH	EA	4
7	14	XDFZZ		7140-152	11071	STRAP ASSEMBLY	EA	4
7	15	PAOFF	6760-00-135-0476	6905-300	11071	MODULE ASSEMBLY	EA	3
7	16	XDFZZ		7140-178-1	11071	DOOR	EA	1
7	17	XDFZZ		7140-176	11071	COVER, TAIL	EA	1
7	18	XDFZZ		MS35233-20	90906	SCREW, MACHINE	EA	10
7	19	XDFZZ		MS133-9	79136	RING, RETAINING	EA	2
7	20	XDFZZ		7140-170	11071	DOOR ASSEMBLY	EA	1
7	21	PAHZZ	6760-00-455-6102	7140-172-1	11071	TAIL CONE ASSEMBLY	EA	1
7	22	XDFZZ		ST1-4-28H5-0	97539	SCREW, MACHINE	EA	4
7	23	PAOZZ	6760-00-999-4745	7140-149	11071	WINDOW	EA	1
7	24	PAFZZ	5935-00-795-7438	DM9702-1975	17419	CONNECTOR, PLUG, ELECTRICAL	EA	1
7	25	PAFZZ	5925-00-881-2465	S21904-30	96067	CIRCUIT BREAKER	EA	1
7	26	XDFZZ		7140-137	11071	BRACKET	EA	1
7	27	PAFZZ	5305-00-054-6651	MS51957-27	90906	SCREW, MACHINE	EA	5
7	28	PAFDL	6760-00-999-4744	7140-120	11071	TURBINE-ALTERNATOR	EA	1
7	29	XDFZZ		5937-231	11071	BUTTON, PLUG	EA	1



NOTE: FOR COMPLETE REFERENCE DESIGNATION PREFIX WITH A1A5. EL2JY008
Figure 8. Pod Assembly LA-388A (A1A5), Internal Components Removed.

SECTION II

TM 11-6760-228-34P-1

(7) ILLUSTRATION		(8)	(9)	(4)	(5)	(6) DESCRIPTION	(7)	(8)
(a) FIG. NO.	(b) ITEM NO.	SMR CODE	MAT. ORIAL STOCK NUMBER	PART NUMBER	PCSN	UNABLE ON CODE	QTY	UNIT
8	1	XDFZZ		ANACH7A	88044	BOLT, MACHINE	EA	12
8	2	XDFZZ		DM9605-37A	17419	CAP, PROTECTIVE	EA	1
8	3	XDFZZ		7148-147	11871	COVER	EA	1
8	4	XDFZZ		MS35233-45	96906	SCREW, MACHINE	EA	52
8	5	XDFZZ		7148-185-2	11871	AIRDUCT	EA	1
8	6	XDFZZ		7148-218	11871	SPACER	EA	2
8	7	XDFZZ		7148-185-3	11871	AIRDUCT	EA	1
8	8	XDFZZ		7148-186-2	11871	AIRDUCT	EA	1
8	9	XDFZZ		7148-181	11871	GASKET, CONNECTOR	EA	1
8	10	PAFZZ	5935-00-844-3737	DM9606-1975	17419	CONNECTOR, RECEPTACLE, ELECTRICAL	EA	1
8	11	XDFZZ		7148-219	11871	SPACER	EA	1
8	12	PAFZZ	5305-00-022-7058	MS35249-22	96906	SCREW, MACHINE	EA	20
8	13	XDFZZ		MS35233-8	96906	SCREW, MACHINE	EA	3
8	14	XDFZZ		7148-167	11871	DEFLECTOR, REAR	EA	1
8	15	XDFZZ		7148-217-1	11871	SPACER	EA	2
8	16	XDFZZ		79NTH60	72962	NUT, SELF-LOCKING, HEXAGON	EA	52
8	17	XDFZZ		MS35233-42	96906	SCREW, MACHINE	EA	30
8	18	XDFZZ		NAJL-048	72962	NUT	EA	8
8	19	XDFZZ		7148-219-1	11871	SPACER	EA	2
8	20	XDFZZ		7148-186-3	11871	AIRDUCT	EA	1
8	21	XDFZZ		7148-186-1	11871	AIRDUCT	EA	1
8	22	XDFZZ		7148-217-2	11871	SPACER	EA	1
8	23	PAFZZ	5340-00-966-3785	MAS1399C4L	80205	INSERT, SCREW THREAD	EA	6
8	24	XDMZZ		7148-155	11871	SUPPORT ASSEMBLY, LEFT	EA	1
8	25	PAFZZ	5330-484-1774	7148-154	11871	GASKET, LATCH	EA	4
8	26	XDFZZ		MS35233-15	96906	SCREW, MACHINE	EA	8
8	27	PAFZZ	5310-00-815-0453	79NM26	72962	NUT, SELF-LOCKING, HEXAGON	EA	24
8	28	XDMZZ		LMTA3300-82	72962	NUT, PLAIN, CL INCH	EA	12
8	29	PAFZZ	5935-00-883-5871	DM9606-197P	17419	CONNECTOR, PLUG, ELECTRICAL	EA	1
8	30	XDFZZ		7148-185-1	11871	AIRDUCT	EA	1
8	31	PAFZZ	5310-00-596-7693	MS35335-31	96906	WASHER, LOCK	EA	18
8	32	XDMZZ		7148-156	11871	SUPPORT ASSEMBLY	EA	1
8	33	XDFZZ		7148-136	11871	SPACER	EA	12
8	34	XDFZZ		RD-32X9-16	97539	SCREW, MACHINE	EA	136
8	35	XDFZZ		7148-232	11871	WASHER, LUG	EA	16
8	36	XDFZZ		ANACH6A	88044	BOLT, MACHINE	EA	4

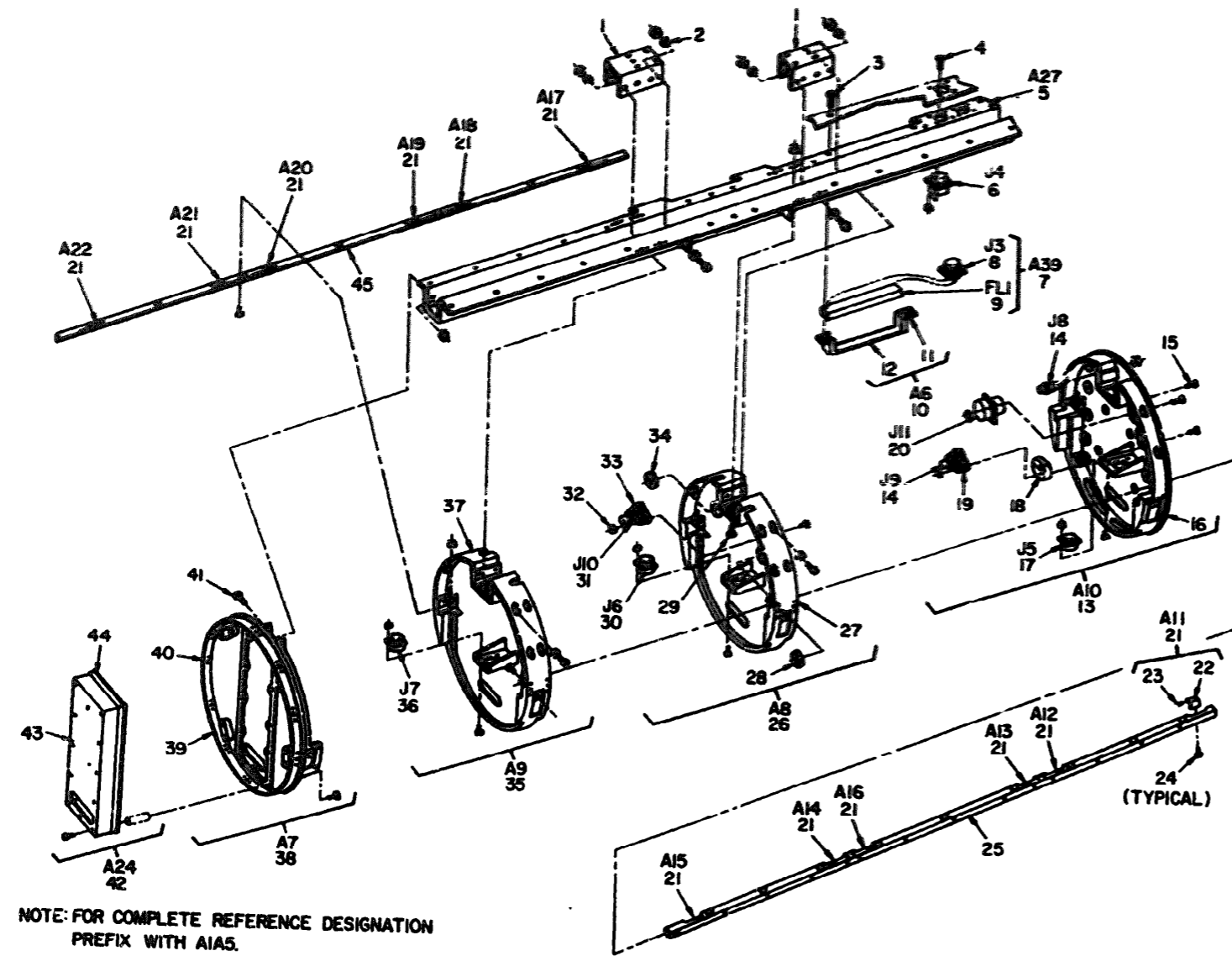


Figure 9. Pod Assembly LA-388A (A1A5), Covers Removed.

SECTION II

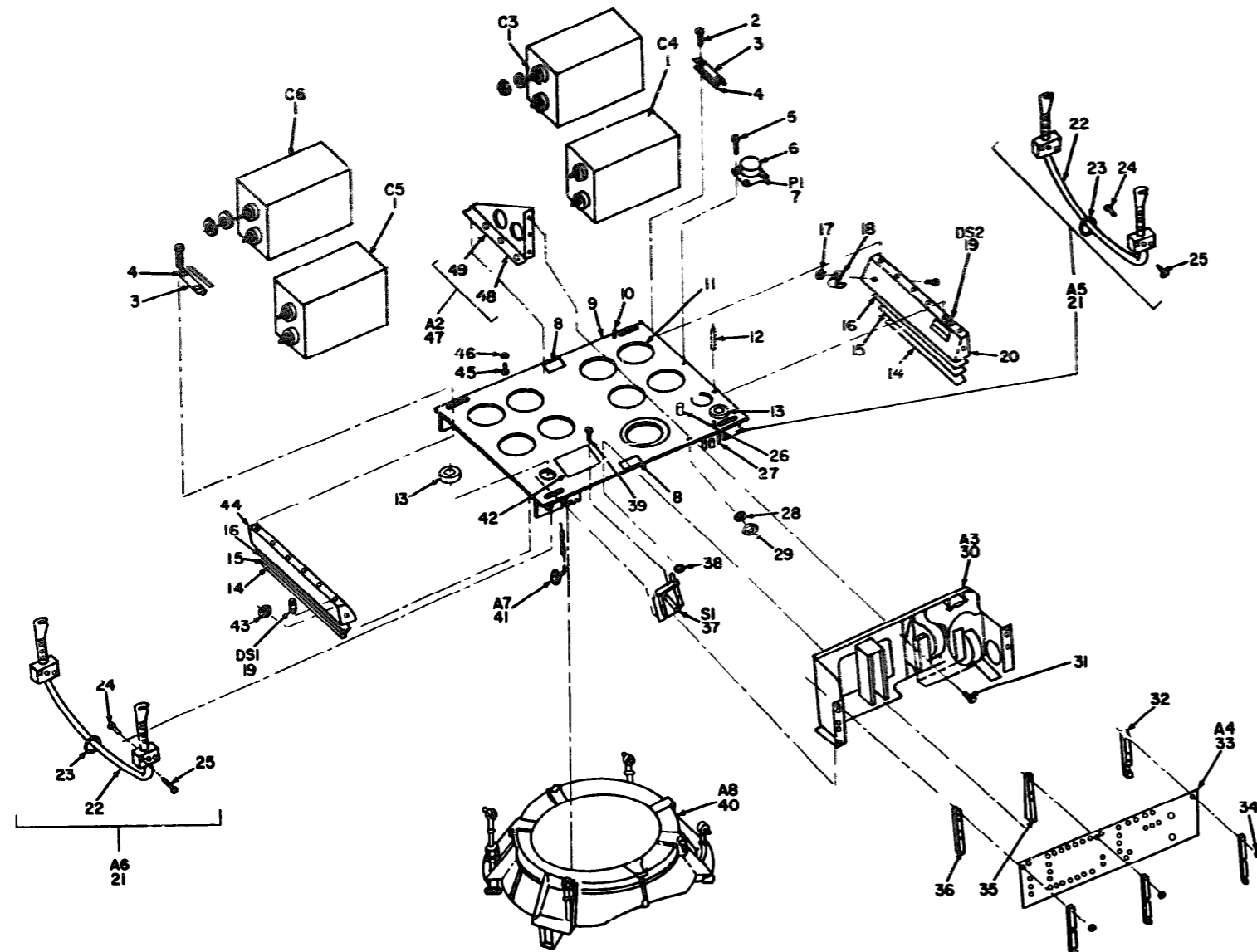
TM 11-6760-228-34P-1

(1) ILLUSTRATION		(2)	(3)	(4)	(5)	(6) DESCRIPTION	(7)	(8)
(a) FIG NO.	(b) TAB NO.	SMR CODE	NATIONAL STOCK NUMBER	PART NUMBER	PCOM	USABLE ON CODE	U/M	QTY INC IN UNIT
9	1	XDFZZ		7140-220	11071	BRACKET	EA	2
9	2	PAFZZ	5310-00-531-9515	AN960C416	88044	WASHER, FLAT	EA	6
9	3	XDFZZ		MS35249-36	96906	SCREW, MACHINE	EA	2
9	4	XDFZZ		04-40X1-2	97539	SCREW, MACHINE	EA	16
9	5	XDFZZ		7140-143	11071	FRAME ASSEMBLY	EA	1
9	6	PAFZZ	5935-00-852-1860	DS00-375	17419	CONNECTOR, RECEPTACLE, ELECTRICAL	EA	1
9	7	XDFFF		7140-257	11071	FILTER AND CABLE ASSEMBLY	EA	1
9	8	XDFZZ		MS3102E20-33P	96906	CONNECTOR, PLUG, ELECTRICAL	EA	1
9	9	PAFZZ	5915-00-134-0641	7140-166	11071	FILTER, RADIO	EA	1
9	10	XDMZZ		7140-194	11071	BRACKET, FILTER	EA	1
9	11	XDMZZ		79NC1-62	72962	NUT, SELF-LOCKING	EA	2
9	12	XDMZZ		7140-194-1	11071	BRACKET	EA	1
9	13	XDFFF		7140-171	11071	BULKHEAD ASSEMBLY	EA	1
9	14	XDFZZ		3107-1	95712	CONNECTOR, RECEPTACLE, ELECTRICAL	EA	2
9	15	XDFZZ		MS35249-12	96906	SCREW, MACHINE	EA	24
9	16	XDFZZ		7140-171-1	11071	BULKHEAD	EA	1
9	17	XDFZZ		17062-37-3051	17419	CONNECTOR, RECEPTACLE, ELECTRICAL	EA	1
9	18	XDFZZ		7140-163	11071	SPACER	EA	1
9	19	XDFZZ		7140-221	11071	SPACER	EA	1
9	20	PAFZZ	5935-00-819-1147	DS00-615	17419	CONNECTOR, RECEPTACLE	EA	1
9	21	XDFFF		7140-114	11071	CATCH ASSEMBLY	EA	12
9	22	XDFZZ		7140-114-1	11071	CATCH	EA	12
9	23	PAFZZ	5315-00-682-1733	MS16555-646	96906	PIN, STRAIGHT, HEADLESS	EA	12
9	24	XDFZZ		MS35250-72	96906	SCREW, MACHINE	EA	24
9	25	XDFZZ		7140-145	11071	SUPPORT, LEFT	EA	1
9	26	XDFFF		7140-141-1	11071	BULKHEAD ASSEMBLY	EA	1
9	27	XDFZZ		7140-141-12	11071	BULKHEAD	EA	1
9	28	PAFZZ	5325-00-282-2132	AN931A12-20	88044	GROMMET, RUBBER	EA	2
9	29	PAFZZ	5305-054-6669	MS35233-44	96906	SCREW, MACHINE	EA	4
9	30	XDFZZ		17062-37-3051	17419	CONNECTOR, RECEPTACLE	EA	1
9	31	XDFZZ		3107-1	95712	CONNECTOR, RECEPTACLE	EA	1
9	32	XDMZZ		22NTH02	72962	NUT, SELF-LOCKING, HEXAGON	EA	4
9	33	XDFZZ		7140-221	11071	SPACER	EA	1
9	34	PAFZZ	5325-00-582-3601	MS35409-38	96906	GROMMET, RUBBER	EA	1
9	35	XDFFF		7140-141-2	11071	BULKHEAD ASSEMBLY	EA	1
9	36	XDFZZ		17062-37-3051	17419	CONNECTOR, RECEPTACLE	EA	1
9	37	XDFZZ		7140-141-11	11071	BULKHEAD	EA	1
9	38	XDFZZ		7140-131	11071	BULKHEAD ASSEMBLY	EA	1
9	39	PAFZZ	5340-00-085-1125	MS1399C00L	00209	INSERT, SCREW THREAD	EA	12
9	40	XDFZZ		7140-131-1	11071	BULKHEAD	EA	1

SECTION II

TM 11-6760-228-34P-1

(1) ILLUSTRATION		(2) SNR CODE	(3) NATIONAL STOCK NUMBER	(4) PART NUMBER	(5) FCOM	(6) DESCRIPTION	(7) U/M	(8) QTY INC IN UNIT
(A) FIG NO.	(B) ITEM NO.					USABLE ON CODE		
9	41	XDFZZ		MS35233-46	96906	SCREW, MACHINE	EA	18
9	42	XDFFF		7148-135	11871	COVER ASSEMBLY	EA	1
9	43	XDFZZ		7148-135-1	11871	COVER	EA	1
9	44	XDFZZ		850-356-2	11871	SUB-CANNEL	EA	1
9	45	XDFZZ		7148-146	11871	SUPPORT, RIGHT	EA	1



NOTE FOR COMPLETE REFERENCE DESIGNATION
PREFIX WITH A1A5A3, A1A5A4, A1A5A5

Figure 10. Illuminator Module Assemblies (A1A5A3, A1A5A4, A1A5A5).

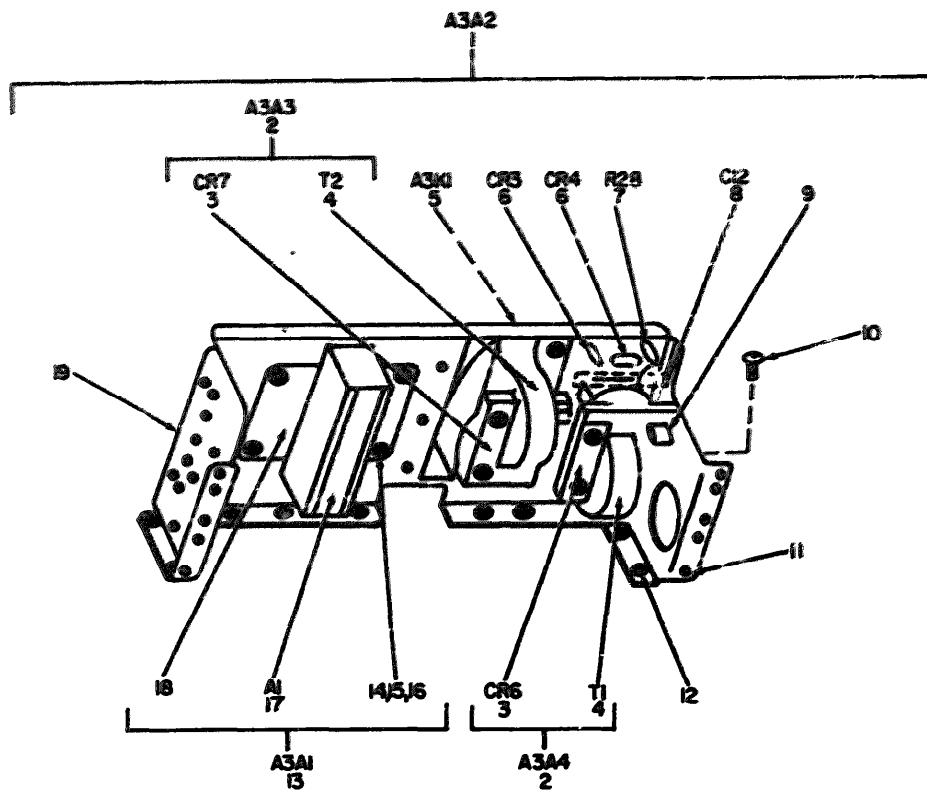
EL2JYO10

ILLUMINATION		PART NUMBER	PART NUMBER	DESCRIPTION	QUANTITY	UNIT		
(1)	(2)							
(3)	(4)	(5)	(6)	(7)	(8)	(9)		
FIG. NO.	FIG. NO.	FIG. NO.	FIG. NO.	FIG. NO.	FIG. NO.	FIG. NO.		
GROUP 0601 ILLUMINATOR MODULE ASSEMBLIES (A1A5A3, A1A5A4, A1A5A5)								
10	2	PAF22	5950-00-959-4379	7140-137	11871	CAPACITOR, FIXED METALLIZED	EA	4
10	3	XDF22		CAV70-6-118	11871	SCREW, MACHINE	EA	16
10	3	XDF22		7140-138	11871	CLAMP, CAP LITER	EA	2
10	4	PAF22	5365-00-133-4112	7148-230	11871	SHIM	EA	4
10	5	XDF22		CAV73C4-76	11871	SCREW, MACHINE	EA	4
10	6	PAF22	5345-00-751-6279	CP140-6	11839	INSERT, PLUG, CONNECTOR	EA	1
10	7	PAF22		0900-37-3081	17419	CONNECTOR, RECEPTACLE, ELECTRICAL	EA	1
10	8	XDF22		7148-197	11871	PLATE, INFORMATION	EA	2
10	9	XDF22		7148-111	11871	PLATE, MOUNT	EA	1
10	10	PAF22	5305-00-494-2651	6151552920	06540	SCREW, PANEL	EA	5
10	11	PAF22	9370-00-808-7468	4951	7-485	CHANNEL	EA	9
10	12	XDF22		7148-187	11871	PIN, GUIDE	EA	1
10	13	PAF22	5325-00-276-6082	MS39489-43	90906	GROMMET, RUBBER	EA	2
10	14	PAF22	5365-00-133-4111	7148-226-3	11871	SHIM	EA	2
10	15	PAF22	5365-00-133-4110	7148-226-2	11871	SHIM	EA	2
10	16	PAF22	5365-00-133-4109	7148-226-1	11871	SHIM	EA	2
10	17	PAF22	5310-00-061-6867	274462	72962	NUT, SELF-LOCKING, HEXAGON	EA	22
10	18	XDF22		3-18-4	95987	CLAMP, LOOP	EA	1
10	19	PAF22	6210-00-145-1313	249-78401471	72619	LAMP, INDICATOR, NEON	EA	2
10	20	XDF22		7148-123	11871	BRACKET, SUPPORT	EA	1
10	21	XDF22		7148-124	11871	HANDLE ASSEMBLY	EA	2
10	22	XDF22		7148-124-1	11871	HANDLE	EA	2
10	23	XDF22		7321-474-1	11871	SPRING, CARTER	EA	2
10	24	XDF22		7148-116	11871	PIVOT, HANDLE	EA	2
10	25	PAF22	5305-00-068-8431	MS16996-13	90906	SCREW, CAP, SOCKET HEAD	EA	8
10	26	PAF22	5940-00-156-7344	2106-06-00	78189	TERMINAL	EA	2
10	27	XDF22		6276E-552520	06540	INSERT	EA	5
10	28	PAF22	5310-00-782-1349	41980C4	66044	WASHER, FLAT	EA	4
10	29	XDF22		198440	72612	NUT, SELF-LOCKING, HEXAGON	EA	4
10	30	XDF22		7148-227	11871	CHASSIS ASSEMBLY	EA	1
10	31	XDF22		CAV70-6-79	11871	SCREW, MACHINE	EA	16
10	32	XDF22		7148-195-2	11871	SPACER, BOARD	EA	1
10	33	PAF22	6760-00-747-7829	7148-112	11871	COMPONENT ASSEMBLY	EA	1
10	34	PAF22	5310-00-595-4211	MS19799-003	90906	WASHER, FLAT	EA	12
10	35	PAF22	6760-00-135-0475	7148-113	11871	SUPPORT, BOARD	EA	1
10	36	PAF22	5365-00-133-4111	7-48-195-1	11871	SPACER	EA	1
10	37	PAF22	5930-00-519-8144	MS16106-1	969	SWITCH, INTERLOCK	EA	1
10	38	PAF22	5310-00-734-5661	MS38331-78	96906	WASHER, LOCK	EA	20

SECTION II

TM 11-6760-228-34P-1

(1) ILLUSTRATION		(2) QSR CODE	(3) NATIONAL STOCK NUMBER	(4) PART NUMBER	(5) FORM	(6) DESCRIPTION	(7) UNABLE TO CODE	(8) QTY. INC. IN UNIT
10	34	XDFZZ	5310-00-926-1835	CAVTS-6-46	11871	SCREW, MACHINE	EA	2
10	40	XDFFF		7148-100	11871	REFLECTOR ASSEMBLY	EA	1
10	41	XDFZZ		7145-228-2	11871	PHOTOCELL ASSEMBLY	EA	1
10	42	XDFZZ		7148-215-1	11871	PLATE, IDENTIFICATION	EA	1
10	43	PAFZZ		72042	72042	NUT, SELF-LOCKING	EA	12
10	44	XDFZZ		7148-123-1	11871	BRACKET	EA	1
10	45	XDFZZ		CAVTS-6-EP	11871	SCREW, MACHINE	EA	4
10	46	XDFZZ		CAVTS-6	11871	WASHER, FLAT	EA	3
10	47	XDFFF		7148-100	11871	BRACKET ASSEMBLY	EA	1
10	48	XDFZZ		7148-100-1	11871	BRACKET	EA	1
10	49	PAFZZ	5310-00-827-7247	72042-62	72042	NUT, SELF-LOCKING	EA	1



NOTE:
 FOR COMPLETE REFERENCE DESIGNATION
 PREFIX WITH A1A5A3, A1A5A4, A1A5A5.

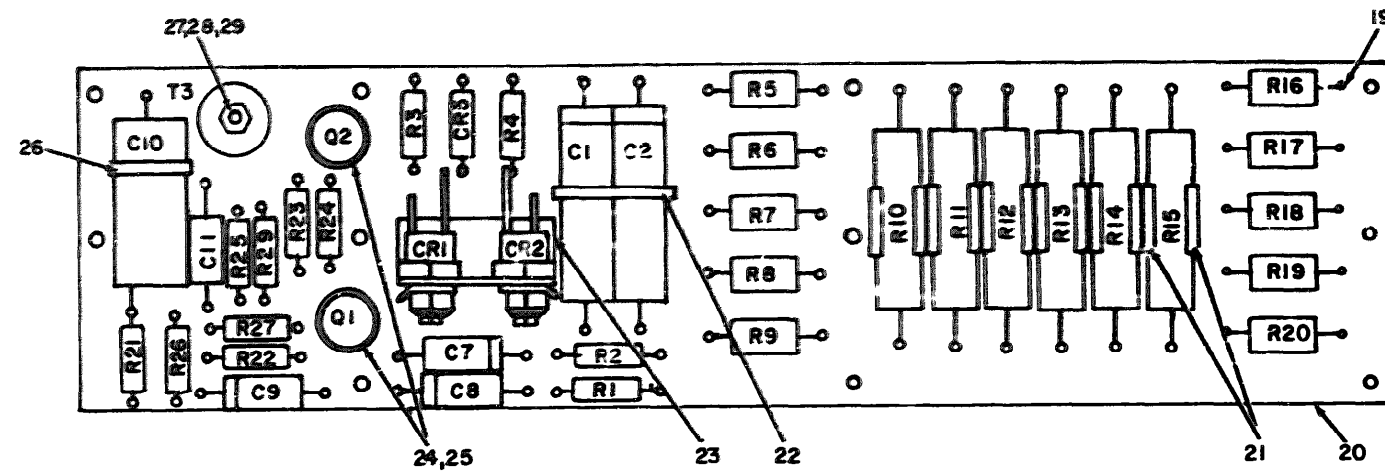
EL2JY011

Figure 11. Illuminator Module Assemblies (A1A5A3, (A1A5A4, A1A5A5) Chassis Assembly.

SECTION II

TM 11-6760-228-34P-1

(1) ILLUSTRATION		(2)	(3)	(4)	(5)	(6)	(7)	(8)
QD FIG NO.	QD ITEM NO.	SNR CODE	NATIONAL STOCK NUMBER	PART NUMBER	FECH	DESCRIPTION	ENABLE C/N CODE	QTY INC IN UNIT
11	1	KDFFF		7148-198	11871	CHASSIS AND FASTENER ASSEMBLY		EA 1
11	2	PAFFF	5950-00-999-4427	7148-198	11871	TRANSFORMER ASSEMBLY		EA 2
11	3	PAFZZ	5941-00-494-8990	8665	06288	CODE		EA 2
11	4	PAFZZ	5910-00-241-9317	7148-255	11871	TRANSFORMER		EA 2
11	5	KDFZZ		7148-129	11871	RELAY, MINIATURE		EA 1
11	6	PAFZZ	5961-00-577-6114	18665	81349	SEMICONDUCTOR DEVICE, DIODE		EA 2
11	7	PAFZZ	5915-00-251-7757	32286270K	81349	RESISTOR, FND, CAPSN		EA 1
11	8	PAFZZ	5910-00-017-9216	CL25B4381W3	81349	CAPACITOR, FILMED, ELECTROLYTIC		EA 1
11	9	KDFZZ		CANFD-1032-8P	11871	SCREW, MACHINE		EA 12
11	10	PAFZZ	5305-00-054-5449	CANFD-4-4P	11871	SCREW, MACHINE		EA 42
11	11	PAFZZ	5310-00-027-9286	70ML7-12-40	72962	NUT, SELF-LOCKING		EA 16
11	12	KDFZZ		6082-142	91508	CLIP, SPRING TENSION		EA 3
11	13	PAFFF	6134-00-999-4448	7148-225	11871	RECTIFIER ASSEMBLY		EA 1
11	14	PAFZZ	5305-00-054-6651	MS51957-27	96906	SCREW, MACHINE		C 6
11	15	PAFZZ	5310-00-880-5976	MS51795-806	96906	WASHER, FLAT		EA 6
11	16	PAFZZ	5310-00-043-1754	MS33317-79	96906	WASHER, LOCK		EA 6
11	17	PAFZZ	5961-00-179-4445	7148-250-1	11871	RECTIFIER		EA 1
11	18	KDFZZ		7148-251	11871	BRACKET, ADAPTER		EA 3
11	19	KDFZZ		7148-198-1	11871	CHASSIS		EA 3



REF. DES.	ITEM NO.	REF. DES.	ITEM NO.	REF. DES.	ITEM NO.	REF. DES.	ITEM NO.	REF. DES.	ITEM NO.	REF. DES.	ITEM NO.	REF. DES.	ITEM NO.
C1	1	C11	4	R1	9	R7	11	R13	12	R19	11	R25	14
C2	1	CR1	5	R2	9	R8	11	R14	12	R20	11	R26	16
C7	2	CR2	5	R3	10	R9	11	R15	12	R21	13	R27	13
C8	2	CR5	6	R4	10	R10	12	R16	11	R22	14	R29	17
C9	2	Q1	7	R5	11	R11	12	R17	11	R23	14	T3	18
C10	3	Q2	8	R6	11	R12	12	R18	11	R24	15		

NOTE:
FOR COMPLETE REFERENCE DESIGNATION
PREFIX WITH A1A5A3A4, A1A5A4A4, A1A5A5A4

EL2JY012

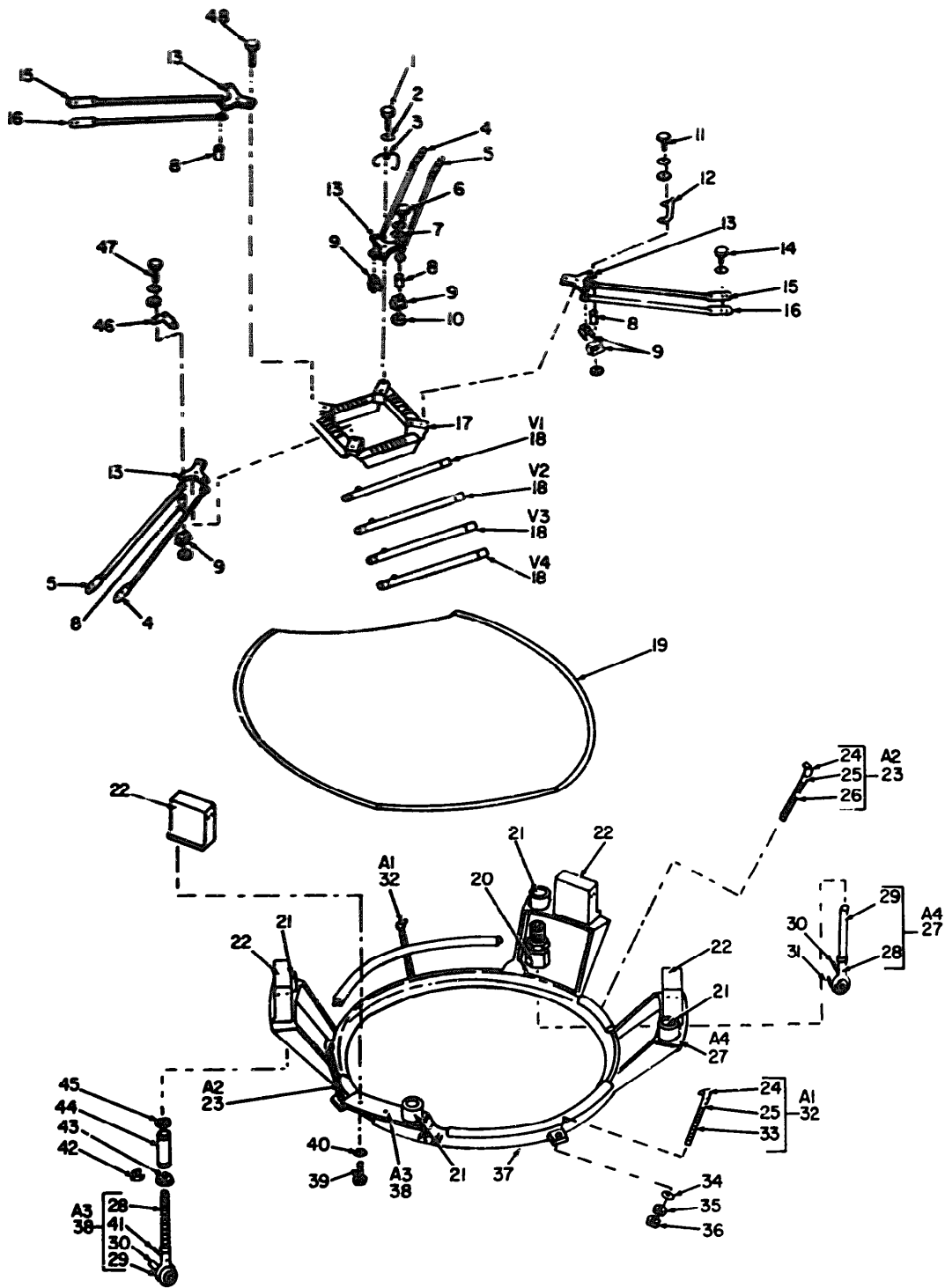
Figure 12. Component Board Assemblies (A1A5A3A4, A1A5A4A4, A1A5A5A4).

SECTION II

TM 11-6760-228-34P-1

(1) QUANTITY		(2) SYMBOL	(3) NATIONAL STOCK NUMBER	(4) PART NUMBER	(5) PCOM	(6) DESCRIPTION	(7) U.S. ARMY CODE	(8) QTY IN UNIT
12	1	XDMZZ		64-105	99515	CAPACITOR	EA	2
12	2	PAMZZ	5910-00-053-5347	DE4-154D	99515	CAPACITOR	EA	3
12	3	XDMZZ		CTRE34VS-K	01349	CAPACITOR, FIXED, PLASTIC	EA	1
12	4	PAMZZ	5910-00-999-4327	E1-205	11871	CAPACITOR	EA	2
12	5	PAMZZ	5961-00-906-7876	2N8693	11871	DIODE	EA	2
12	6	PAMZZ	5961-00-635-4755	1N4151	00131	DIODE	EA	1
12	7	PAMZZ	5961-00-655-1551	2N1132	01349	TRANSISTOR	EA	1
12	8	PAMZZ	5961-00-136-3909	2N3507	01349	TRANSISTOR	EA	1
12		PAMZZ	5905-00-299-2022	RC32GF22J	01349	RESISTOR, FIXED, COMPOSITION	EA	2
12	10	PAMZZ	5905-00-845-9431	RC20GF4R7J	01349	RESISTOR, FIXED, COMPOSITION	EA	2
12	11	PAMZZ	5905-00-279-1930	RC42GF224J	01349	RESISTOR, FIXED, COMPOSITION	EA	10
12	12	PAMZZ	5965-00-636-6703	RM56LV502	01349	RESISTOR, FIXED, WIRE WOUND	EA	6
12	13	PAMZZ	5905-00-141-6591	RC20GF103JS	01349	RESISTOR, FIXED, COMPOSITION	EA	2
12	14	PAMZZ	5905-00-195-6886	RC20GF102J	01349	RESISTOR, FIXED, COMPOSITION	EA	3
12	15	PAMZZ	5905-00-106-9344	RC20G101JS	01349	RESISTOR, FIXED, COMPOSITION	EA	1
12	16	PAMZZ	5905-00-279-3503	RC20GF602J	01349	RESISTOR, FIXED, COMPOSITION	EA	1
12	17	PAMZZ	5905-00-256-3361	RC42GF102J	01349	RESISTOR, FIXED, COMPOSITION	EA	1
12	18	XDMZZ		7143-196	11871	TRANSFORMER, PULSE	EA	1
12	19	XDMZZ		1280C	00245	TERMINAL, STUD	EA	225
12	20	XDMZZ		7148-197-1	11871	BOARD	EA	1
12	21	XDMZZ		6003-17A	91506	CLIP	EA	10
12	22	PAMZZ	5975-00-074-2072	5572	06383	STRAP, LINE SUPPORT	EA	3
12	23	XDMZZ		7148-224	11871	BRACKET	EA	3
12	24	PAMZZ	5961-00-085-4037	A51043	00289	HOLDER, TRANSISTOR	EA	6
12	25	PAMZZ	5940-00-552-3635	29A250	79963	LUG, SOLDER	EA	6
12	26	PAMZZ	5975-00-727-5153	5571	06383	STRAP, LINE SUPPORT	EA	3
12	27	PAMZZ	5310-00-081-8087	NS20359-632A	96906	NUT, PLAIN, HEXAGON	EA	3
12	28	XDMZZ		CAV70-6-16P	11871	SCREW, MACHINE	EA	3
12	29	PAMZZ	5310-00-722-5998	NS15795-805	96906	WASHER, FLAT	EA	6

GROUP 060101 COMPONENT BOARD ASSEMBLIES
(A1A5A3A4, A1A5A4A4, A1A5A5A4)



**NOTE FOR COMPLETE REFERENCE
 DESIGNATION PREFIX WITH A1A5A3A8, A1A5A4A8, A1A5A5A8**

EL2JY013

Figure 13. Reflector Assemblies (A1A5A3A8, A1A5A4A8, A1A5A5A8).

SECTION II

TM 11-6760-228-34P-1

(1) ILLUSTRATION		(2)	(3)	(4)	(5)	(6) DESCRIPTION	(7)	(8)
(a) FIG NO.	(b) PAGE NO.	GROUP CODE	NATIONAL STOCK NUMBER	PART NUMBER	FORM	U.S. ARMY CODE	QTY	UNIT

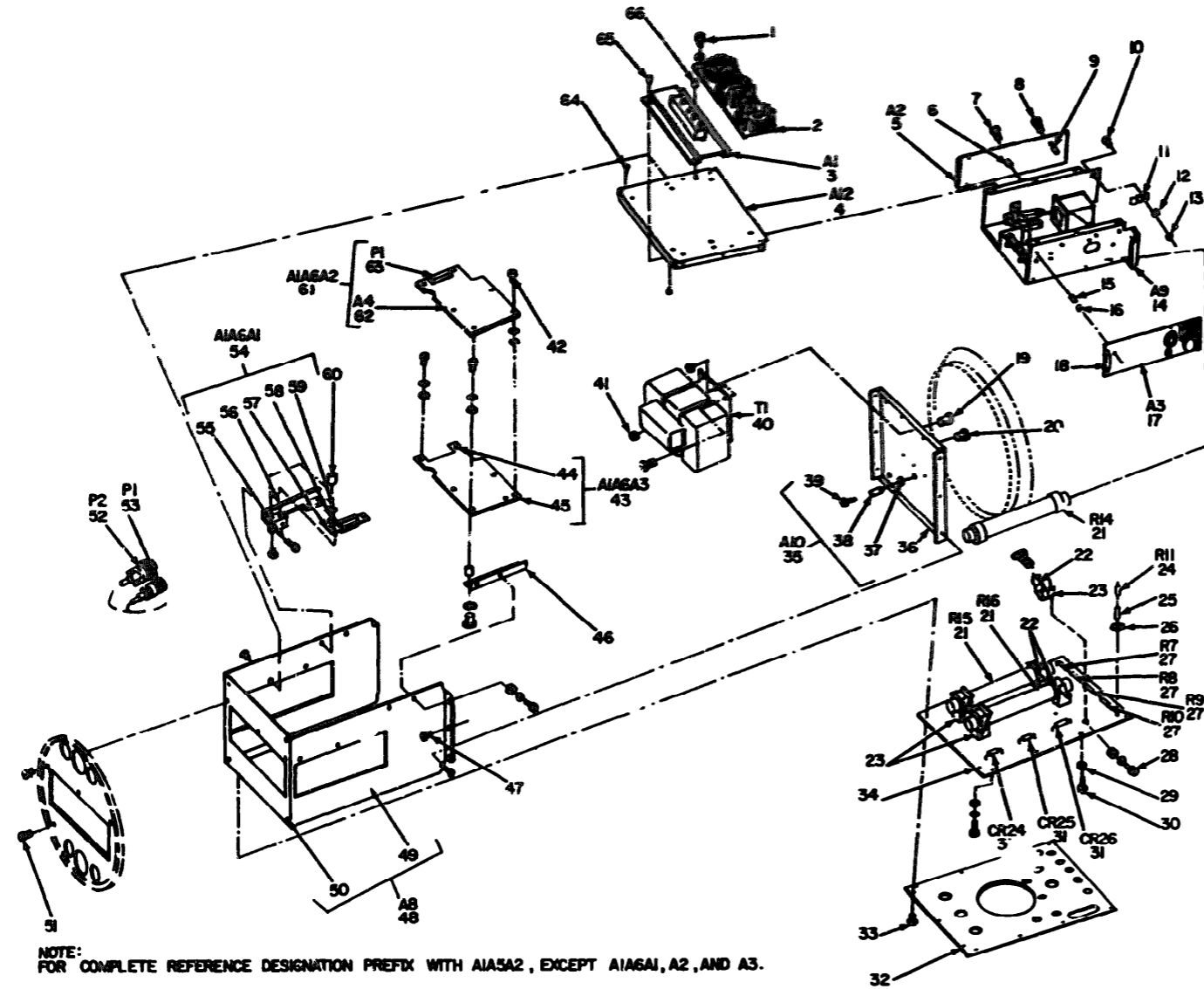
GROUP 060102 REFLECTOR ASSEMBLIES
(A1A5A3A8, A1A5A4A8, A1A5A5A8)

13	1	XDFZZ		CAV70-6-9P	11871	SCREW, MACHINE	EA	12
13	2	PAFZZ	5310-00-643-1754	MS35337-79	96906	WASHER, LOCK	EA	48
13	3	PAFZZ	5340-00-488-3941	7140-247	11871	CLIP	EA	3
13	4	XDFZZ		7140-142-1	11871	ARM, SUPPORT	EA	6
13	5	XDFZZ		7140-141-2	11871	ARM, SUPPORT	EA	6
13	6	XDFZZ		CAV70-6-14P	11871	SCREW, MACHINE	EA	9
13	7	PAFZZ	5310-00-77-990	MS15795-805	96906	WASHER, FLAT	EA	48
13	8	XDFZZ		MS42006-20	80205	SPACER	EA	12
13	9	PAFZZ	5920-00-134-8320	101-326-13	99378	CLIP	EA	24
13	10	XDFZZ		LWN2660-62	72962	NUT, HEXAGON	EA	24
13	11	XDFZZ		CAV70-6-15P	11871	SCREW, MACHINE	EA	12
13	12	XDFZZ		7185-244	11871	CLAMP	EA	12
13	13	PAFZZ	5970-00-134-5415	7140-122-1	11871	INSULATOR	EA	12
13	14	XDFZZ		CAV70-6-5P	11871	SCREW, MACHINE	EA	48
13	15	XDFZZ		7140-141-1	11871	ARM, SUPPORT	EA	6
13	16	XDFZZ		7140-142-2	11871	ARM, SUPPORT	EA	6
13	17	PAFZZ	6760-00-133-4106	725-110	11871	REFLECTOR, PRIMARY	EA	3
13	18	PAFZZ	6240-00-999-4421	7140-127	11871	HEXON LAMP	EA	4
13	19	PAFZZ	6760-00-133-4114	7140-136	11871	REFLECTOR, PARABOLIC	EA	3
13	20	XDFZZ		7140-161	11871	SHIMMER	EA	3
13	21	XDFZZ		7140-145	11871	SLEEVE	EA	9
13	22	XDFZZ		7140-133	11871	SPACER	EA	12
13	23	XDFZZ		7140-129-3	11871	CLIP AND SCREW ASSEMBLY	EA	2
13	24	XDFZZ		7140-128-13	11871	CLIP	EA	12
13	25	PAFZZ	5315-00-291-5471	MS16562-189	96906	PIN, SPRING	EA	12
13	26	XDFZZ		7140-128-12	11871	SCREW	EA	6
13	27	XDFZZ		7140-163-1	11871	ROD END ASSEMBLY	EA	2
13	28	PAFZZ	5315-00-058-9727	MS16562-209	96906	PIN, SPRING	EA	12
13	29	XDFZZ		PP53A	70110	ROD END	EA	12
13	30	XDFZZ		7140-162	11871	STUD	EA	6
13	31	XDFZZ		ANS69DC1032M16	88044	SETScrew	EA	12
13	32	XDFZZ		7140-129-2	11871	CLIP AND SCREW ASSEMBLY	EA	2
13	33	XDFZZ		7140-129-11	11871	SCREW	EA	6
13	34	PAFZZ	5310-00-558-6207	AN960C0L	88044	WASHER, FLAT	EA	12
13	35	PAFZZ	5310-00-271-4445	AN340C032	88044	NUT, PLAIN, HEXAGON	EA	12
13	36	XDFZZ		MS203640032A	96906	NUT, SELF-LOCKING	EA	12
13	37	XDFZZ		7140-132	11871	SUPPORT	EA	3
13	38	XDFZZ		7140-163-3	11871	ROD END ASSEMBLY	EA	2

SECTION II

TM 11-6760-228-34P-1

(1) ILLUSTRATION		(2) SER CODE	(3) NATIONAL STOCK NUMBER	(4) PART NUMBER	(5) FROM	(6) DESCRIPTION	(7) U/M	(8) QTY INC IN UNIT
(a) FIG NO.	(b) ITEM NO.					USABLE QN CODE		
13	39	PAF22	5325-00-056-3451	CAVTO-4-8P	11871	SCREW, MACHINE	EA	24
13	40	PAF22	5310-00-734-5661	WASHER-70	96906	WASHER, LOCK	EA	72
13	41	EDF22		7140-144	11871	STUD, THREADED	EA	6
13	42	EDF22		MS16624-4043	96906	RING, RETAINING	EA	18
13	43	PAF22	5310-00-687-6349	MS25022-5	96906	NUT, PLAIN, HEXAGON	EA	9
13	44	EDF22		7140-129	11871	NUT, PIVOT	EA	9
13	45	EDF22		CAV10-220P	11871	WASHER, FLAT	EA	60
13	46	EDF22		7145-245	11871	CLAMP, BRUSH	EA	3
13	47	EDF22		CAVTO-4-10P	11871	SCREW, MACHINE	EA	12
13	48	EDF22		CAVTO-6-12P	11871	SCREW, MACHINE	EA	12



EL2JY014

Figure 14. Power Supply Assembly (A1A5A2).

SECTION II

TM 11-6760-228-34P-1

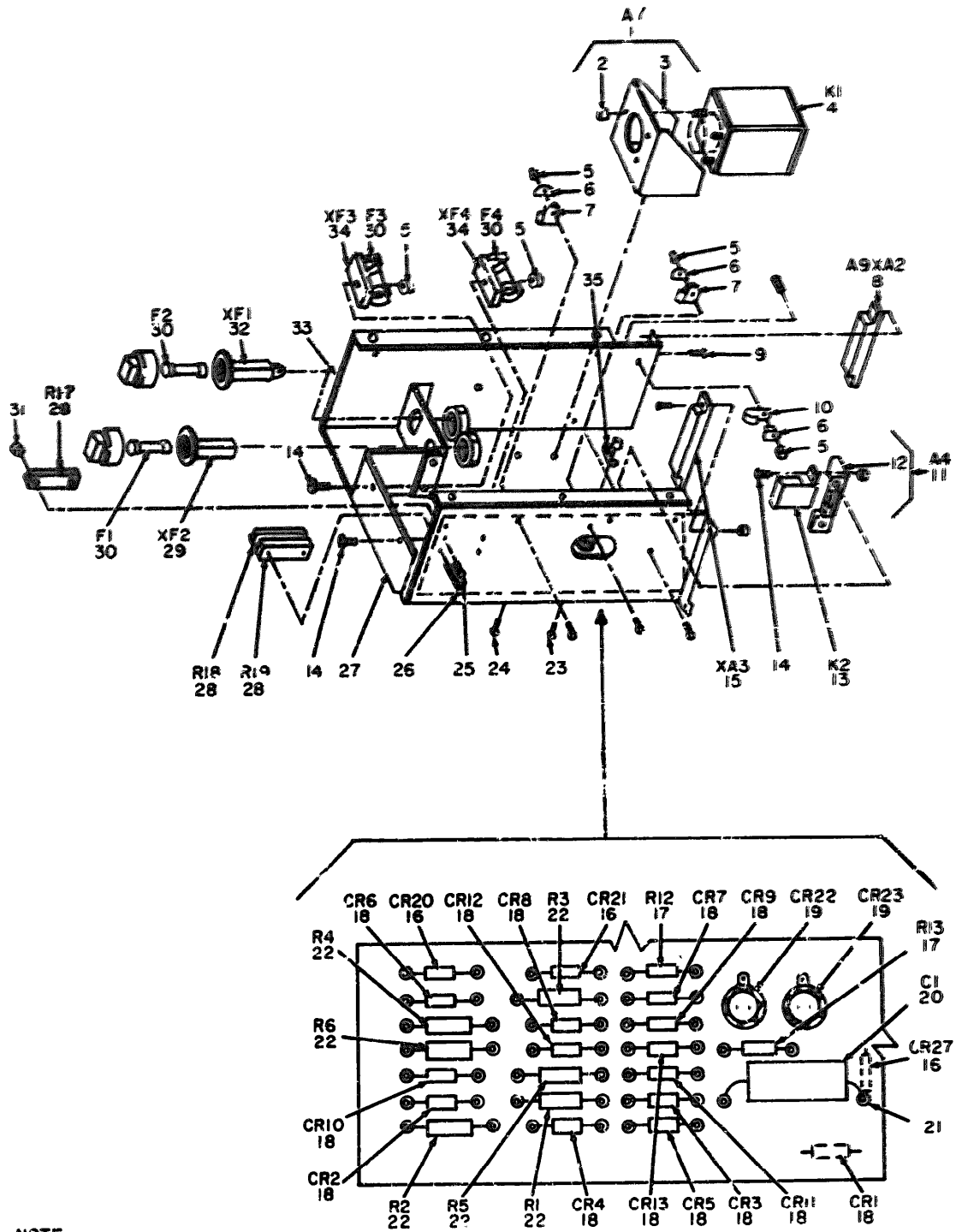
ILLUSTRATION		(3)	(4)	(5)	(6)	(7)	(8)
(A) NO.	(B) ITEM NO.	SMR CODE	NATIONAL STOCK NUMBER	PART NUMBER	FSCN	DESCRIPTION	USABLE ON CODE
14	1	XDFZZ		CAV70-4-5P	11871	SCREW,MACHINE	EA 14
14	2	XDFFF		7148-209	11871	SCR CONTRL ASSEMBLY	EA 1
14	3	XDFFF		7148-254	11871	RECTIFIER ASSEMBLY	EA 1
14	4	XDFZZ		7148-203	11871	COVER,SUBCHASSIS	EA 1
14	5	PA0MH	6760-00-499-4619	7148-212	11871	LOGIC BOARD ASSEMBLY	EA 1
14	6	XDMZZ		1249-11	71279	SPACER	EA 1
14	7	XDFZZ		CAV71C2-8G	11871	SCREW,MACHINE	EA 1
14	8	XDFZZ		CAV71C1-4G	11871	SCREW,MACHINE	EA 8
14	9	XDFZZ		3-100X1-810X1-3 2	08863	WASHER,NONMETALIC	EA 4
14	10	XDFZZ		CAV71-6-8P	11871	SCREW,MACHINE	EA 1
14	11	PAFZZ	5340-00-290-7273	3-4-6	95987	CLAMP,LOOP	EA 1
14	12	XDFZZ		CAV25-11P	11871	WASHER,FLAT	EA 1
14	13	XDFZZ		MS203640632A	96906	NUT,SELF-LOCKING,HEXAGON	EA 17
14	14	XDFFF		7148-202	11871	CHASSIS ASSEMBLY	EA 1
14	15	XDFZZ		9724A0440-1C	06540	SPACER	EA 8
14	16	XDFZZ		12NE4284-2-62	72962	NUT	EA 6
14	17	PAF0M	6760-00-999-4634	7148-210	11871	VOLTAGE CONTROL BOARD ASSEMBLY	EA 1
14	18	PAFZZ	5310-00-595-6211	MS15795-803	96906	WASHER,FLAT	EA 18
14	19	XDFZZ		CAV73C10-8G	11871	SCREW,MACHINE	EA 2
14	20	XDFZZ		CAV70-1032-9P	11871	SCREW,MACHINE	EA 2
14	21	PAFZZ	5905-00-802-8478	MVZ-7	11502	RESISTOR,HIGH VOLTAGE,CARBON	EA 3
14	22	XDFZZ		FC100E	11769	CLIP,EJECTOR	EA 3
14	23	PAFZZ	5999-00-136-4978	FC111ME	11769	CLIP (NONEJECT),ELECTRICAL	EA 3
14	24	PAFZZ	5905-00-279-1954	RC42GF154J	81349	RESISTOR,FIXED,COMPOSITION OR	EA 1
14	24	PAFZZ	5905-00-279-1946	RC42GF164J	81349	RESISTOR,FIXED,COMPOSITION OR	EA 1
14	24	PAFZZ	5905-00-279-1943	RC42GF184J	81349	RESISTOR,FIXED,COMPOSITION OR	EA 1
14	24	PAFZZ	5905-00-279-1934	RC42GF204J	81349	RESISTOR,FIXED,COMPOSITION OR	EA 1
14	24	PAFZZ	5905-00-279-1927	RC42GF244J	81349	RESISTOR,FIXED,COMPOSITION OR	EA 1
14	24	PAFZZ	5905-00-279-1921	RC42GF274J	81349	RESISTOR,FIXED,COMPOSITION OR	EA 1
14	24	PAFZZ	5905-00-279-1916	RC42GF304J	81349	RESISTOR,FIXED,COMPOSITION OR	EA 1
14	24	PAFZZ	5905-00-259-3767	RC42GF334J	81349	RESISTOR,FIXED,COMPOSITION	EA 1
14	25	XDFZZ	5940-00-156-7344	A3250-12	76665	TERMINAL,LUG	EA 1
14	26	XDFZZ	5310-00-753-4107	CAV10-20P	11871	WASHER,FLAT	EA 24
14	27	PAFZZ	5905-00-279-1930	RC42GF224J	81349	RESISTOR,FIXED,COMPOSITION	EA 4
14	28	PAFZZ	5305-00-054-5649	CAV70-4-6P	11871	SCREW,MACHINE	EA 12
14	29	XDFZZ		7148-235	11871	BUSHING,INSULATING	EA 6
14	30	PAFZZ	5365-00-724-3432	CAV10-34P	11871	WASHER,FLAT	EA 6
14	31	PAFZZ	5961-00-912-4238	1N1733A	81349	SEMICONDUCTOR DEVICE,DIODE	EA 3

GROUP 0602 POWER SUPPLY ASSEMBLY (A1A5A2)

SECTION II

TM 11-6760-228-34P-1

(1) ILLUSTRATION		(2)	(3)	(4)	(5)	(6) DESCRIPTION	(7)	(8)
(A) FIG NO.	(B) ITEM NO.	SAR CODE	NATIONAL STOCK NUMBER	PART NUMBER	PCSN		U/M	QTY INC IN UNIT
14	32	XDFZZ		7148-215	11871	SUPPORT, HOUSING	EA	1
14	33	XDFZZ		CAV70-6-9P	11871	SCREW, MACHINE	EA	10
14	34	XDFZZ		7148-208	11871	PLATE, INSULATOR	EA	1
14	35	XDFZZ		7148-207	11871	PLATE ASSEMBLY	EA	1
14	36	XDFZZ		7148-207-1	11871	PLATE	EA	1
14	37	PAFZZ	5310-00-941-6629	4382-5	06540	RING, RETAINING	EA	5
14	38	XDFZZ		62948-551032	06540	SCREW, RETAINER	EA	5
14	39	PAFZZ	5305-00-939-0485	6143551032	06540	SCREW, PANEL, CAP	EA	5
14	40	PAFZZ	5950-00-933-8685	7148-181	11871	TRANSFORMER, POWER	EA	1
14	41	XDFZZ		68A002	72962	NUT, SELF-LOCKING, HEXAGON	EA	4
14	42	PAFZZ	5305-00-925-4774	MS35275-214	96906	SCREW, MACHINE	EA	10
14	43	XDFZZ		7148-273	11871	SHIELD AND SPACER ASSEMBLY, TRANSFORMER	EA	1
14	44	XDFZZ		95310A0440-10A	06540	SPACER	EA	6
14	45	XDFZZ		7148-273-1	11871	SHIELD	EA	1
14	46	XDFZZ		7148-275	11871	BRACKET, ANGLE EXTRUDED	EA	1
14	47	PAFZZ	5305-00-958-6517	MS16996-12	96906	SCREW, CAP	EA	8
14	48	XDFZZ		7148-206	11871	CHASSIS ASSEMBLY	EA	1
14	49	XDFZZ		7148-206-1	11871	CHASSIS	EA	1
14	50	PAFZZ	5310-00-027-7247	79MCFRA2-62	72962	NUT, SELF-LOCKING, HEXAGON	EA	4
14	51	XDFZZ		MS35213-30	96906	SCREW, MACHINE	EA	5
14	52	XDFZZ		0507-61P-059	17419	CONNECTOR, RECEPTACLE, ELECTRICAL	EA	1
14	53	XDFZZ		099702-197P	17419	CONNECTOR, RECEPTACLE, ELECTRICAL	EA	1
14	54	XDFZZ		7148-279	11871	CONNECTOR AND BRACKET ASSEMBLY	EA	1
14	55	PAFZZ	5940-00-682-9080	R5TSM36TUR	98292	TERMINAL	EA	1
14	56	XDFZZ		7148-274-1	11871	BRACKET	EA	1
14	57	PAFZZ	5935-00-306-3225	D8MWR255	71468	CONNECTOR, ELECTRICAL	EA	1
14	58	PAFZZ	5310-00-928-2690	MS35338-134	96906	WASHER	EA	2
14	59	PAFZZ	5305-00-054-5637	MS51957-3	96906	SCREW, MACHINE	EA	2
14	60	PAFZZ	5310-00-283-7584	8392A0440-10A	06540	SPACER	EA	4
14	61	PAFDD	6760-00-204-2976	7148-271	11871	BOARD ASSEMBLY, RATE LIMIT/PRIMARY POWER DISCONNECT	EA	1
14	62	XDFZZ		7148-272	11871	PRINTED CIRCUIT BOARD ASSEMBLY	EA	1
14	63	PAFZZ	5935-00-306-3226	D8MWR25PB	71468	CONNECTOR, ELECTRICAL	EA	1
14	64	XDFZZ		CAV73C6-6G	11871	SCREW, MACHINE	EA	6
14	65	XDFZZ		CAV70-8-8P	11871	SCREW, MACHINE	EA	10
14	66	XDFZZ		8215A0440-1C	06540	SPACER	EA	4



NOTE.
FOR COMPLETE REFERENCE
DESIGNATION PREFIX WITH A1A5A2.

EL2JY015

Figure 15. Power Supply Assembly (A1A5A2), Subchassis.

SECTION II

TM 11-6760-228-34P-1

(7) ILLUSTRATION		(8)	(9)	(10)	(5) FSCM	(6) DESCRIPTION	(11) QUANTITY	(12) UNIT
(A) FIG NO.	(B) ITEM NO.	SUB CODE	NATIONAL STOCK NUMBER	PART NUMBER				
15	1	XDFFF		7140-204	11871	BRACKET ASSEMBLY	EA	1
15	2	PAF22	5310-00-027-7247	72962	72962	NUT, SELF-LOCKING, HEXAGON	EA	1
15	3	XDF22		7140-204-10	11871	BRACKET	EA	1
15	4	XDF22		3751-80001	24727	RELAY	EA	1
15	5	XDF22		72962-40	11871	NUT, SELF-LOCKING, HEXAGON	EA	6
15	6	PAF22	5310-00-655-9401	95987	95987	WASHER, SADDLE	EA	4
15	7	PAF22	5310-827-6389	1-4-4	95987	CLAMP, LOOP	EA	3
15	8	XDF22		PCAL1R01	11709	CONNECTOR	EA	1
15	9	PAF22	5320-00-637-5422	MS20470A3-4	96906	RIVET, SOLID	EA	6
15	10	XDF22		9-16-4	95987	CLAMP, LOOP	EA	1
15	11	XDFFF		7140-205	11871	BRACKET ASSEMBLY	EA	1
15	12	XDF22		7140-205-1	11871	BRACKET	EA	1
15	13	PAF22	5945-00-999-4631	7140-207-1	11871	RELAY, SENSITIVE	EA	1
15	14	PAF22	5365-00-054-5647	MS51957-13	96906	SCREW, MACHINE	EA	4
15	15	PAF22	5935-00-964-3550	WD225	81312	CONNECTOR, RECEPTACLE, ELECTRICAL	EA	1
15	16	PAF22	5961-00-577-4084	1M645	81349	SEMICONDUCTOR DEVICE, DIODE	EA	3
15	17	PAF22	5905-00-192-4350	RC20GF105J	81349	RESISTOR, FIXED, COMPOSITION	EA	2
15	18	PAF22	5961-00-064-2379	1M649	81349	SEMICONDUCTOR DEVICE, DIODE	EA	13
15	19	PAF22	5961-00-825-8667	1M128A	81349	SEMICONDUCTOR DEVICE, DIODE	EA	2
15	20	PAF22	5910-00-904-3538	DE-105	99515	CAPACITOR, FIXED, PLASTIC	EA	1
15	21	PAF22	5940-00-862-9030	F4E-5M36TWR	98291	TERMINAL, STUD	EA	46
15	22	PAF22	5905-00-279-1719	RC12GF100J	81349	RESISTOR, FIXED, COMPOSITION	EA	6
15	23	PAF22	5305-00-054-6651	MS51957-27	96906	SCREW, MACHINE	EA	1
15	24	XDF22		CAV70-6-6P	11871	SCREW, MACHINE	EA	24
15	25	XDF22		CAV70-2-8P	11871	SCREW, MACHINE	EA	2
15	26	XDF22		CAV70-2-12P	11871	SCREW, MACHINE	EA	2
15	27	XDF22		7140-202-2	11871	BRACKET	EA	1
15	28	PAF22	5905-00-913-8334	301011-253	80294	RESISTOR, VARIABLE	EA	3
15	29	PAF22	5920-00-729-8930	FML17C	81349	FUSEHOLDER	EA	1
15	30	PAF22	5920-00-851-9476	F02B32V5A	81349	FUSE CARTRIDGE	EA	4
15	31	PAF22	5310-00-622-1726	68-1660-26	72962	NUT, SELF-LOCKING, HEXAGON	EA	6
15	32	PAF22	5920-00-655-2154	FML18G2	81349	FUSEHOLDER	EA	1
15	33	XDF22		7140-202-1	11871	CHASSIS	EA	1
15	34	PAF22	5920-00-142-7439	357001	75915	FUSEHOLDER	EA	2
15	35	PAF22	5940-00-143-4637	TE401-02	72962	TERMINAL	EA	1

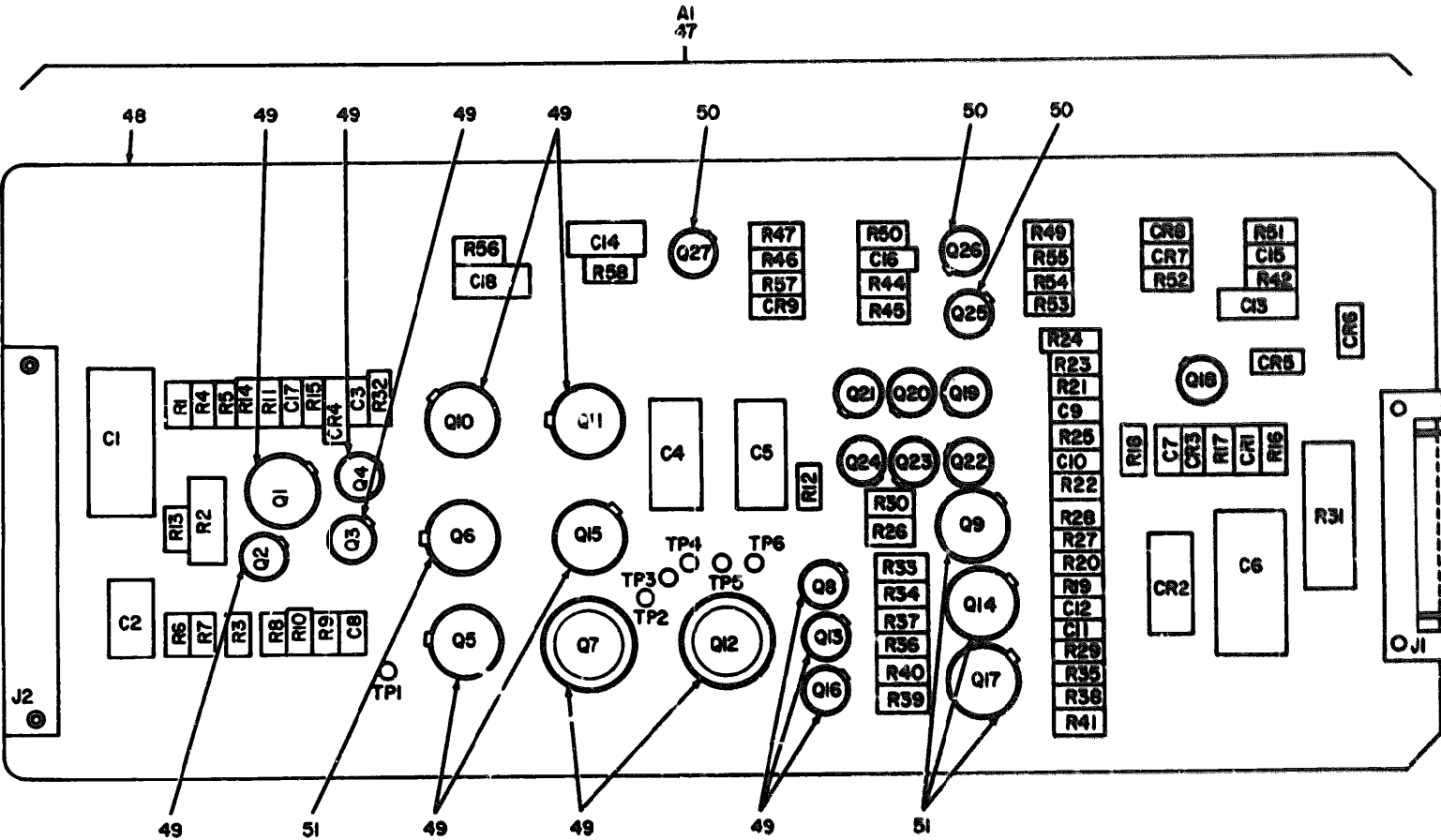


Figure 16. Logic Board Assembly (A1A5A2A2), (Sheet 1 of 2).

NOTE. FOR COMPLETE REFERENCE DESIGNATION PREFIX WITH A1A5A2A2.

EL2JY016

REF. DES.	ITEM NO.	REF. DES.	ITEM NO.	REF. DES.	ITEM NO.	REF. DES.	ITEM NO.	REF. DES.	ITEM NO.	REF. DES.	ITEM NO.
C1	1	CR3	8	Q12	16	R5	24	R25	35	R46	43
C2	2	CR4	10	Q13	14	R6	25	R26	38	R47	22
C3	3	CR5	10	Q14	17	R7	22	R27	35	R49	42
C4	4	CR6	10	Q15	18	R8	26	R28	37	R50	24
C5	4	CR7	10	Q16	14	R9	27	R29	35	R51	37
C6	1	CR8	10	Q17	17	R10	27	R30	38	R52	24
C7	5	CR9	10	Q18	19	R11	24	R31	39	R53	25
C8	3	J1	11	Q19	14	R12	28	R32	40	R54	44
C9	3	J2	12	Q20	14	R13	29	R33	41	R55	27
C10	3	Q1	13	Q21	20	R14	22	R34	37	R56	27
C11	3	Q2	14	Q22	14	R15	30	R35	29	R57	45
C12	3	Q3	14	Q23	14	R16	24	R36	41	R58	24
C13	2	Q4	14	Q24	20	R17	31	R37	37	TP1	46
C14	2	Q5	15	Q25	21	R18	32	R38	29	TP2	46
C15	6	Q6	15	Q26	21	R19	33	R39	41	TP3	46
C16	7	Q7	16	Q27	21	R20	34	R40	37	TP4	46
C17	6	Q8	14	R1	22	R21	35	R41	29	TP5	46
C18	2	Q9	17	R2	23	R22	36	R42	42	TP6	46
CR1	8	Q10	18	R3	24	R23	35	R44	26		
CR2	9	Q11	18	R4	25	R24	37	R45	22		

NOTE
FOR COMPLETE REFERENCE DESIGNATION PREFIX WITH A1A5A2A2

EL2JY017

Figure 16. Logic Board Assembly (A1A5A2A2) (Sheet 2 of 2).

SECTION II

TM 11-6760-228-34P-1

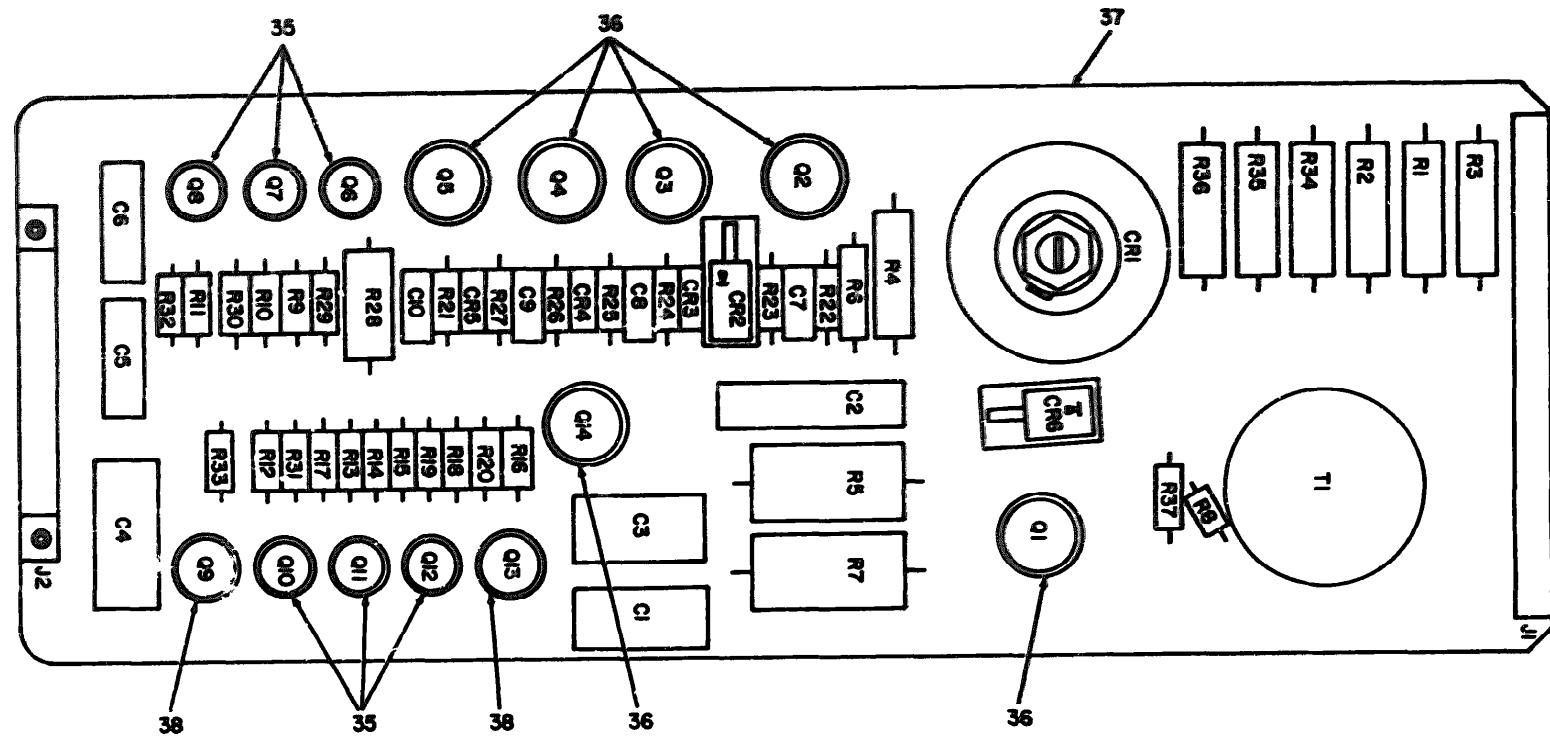
ILLUSTRATION		(3)	(4)	(5)	(6)	(7)	(8)
(a)	(b)	NATIONAL STOCK NUMBER	PART NUMBER	FSCM	DESCRIPTION	USABLE ON CODE	QTY INC IN UNIT
FIG NO	ITEM NO	SMR CODE					
16	1	KDHZZ	202E1-105E	99515	CAPACITOR, FIXED, DIELECTRIC		EA 2
16	2	PAHZZ	5910-00-684-2978 2002-104K	14158	CAPACITOR, FIXED, CERAMIC		EA 4
16	3	PAHZZ	5910-00-904- 2042-103K	14158	CAPACITOR, FIXED, CERAMIC		EA 6
16	4	KDHZZ	202E1-334E	99515	CAPACITOR, FIXED, DIELECTRIC		EA 2
16	5	KDHZZ	2042-153J	14158	CAPACITOR, FIXED, CERAMIC		EA 1
16	6	KDHZZ	CK1T082K	14158	CAPACITOR, FIXED, CERAMIC		EA 2
16	7	PAHZZ	5910-00-089-0612 EL50RC104K	20932	CAPACITOR, FIXED, CERAMIC		EA 1
16	8	PAHZZ	5961-00-752-6163 1N9658	81349	SEMICONDUCTOR DEVICE, DIODE		EA 2
16	9	PAHZZ	5961-00-950-6577 1N3822A	81349	SEMICONDUCTOR DEVICE, DIODE		EA 1
16	10	PAHZZ	5961-00-577-6084 1N645	81349	SEMICONDUCTOR DEVICE, DIODE		EA 6
16	11	PAHZZ	5935-00-939-9763 PC111P3	49956	CONNECTOR, RECEPTACLE, ELECTRICAL		EA 1
16	12	KDHZZ	PC117R02	17357	CONNECTOR, RECEPTACLE, ELECTRICAL		EA 1
16	13	PAHZZ	5961-00-808-8398 2N491	81349	TRANSISTOR		EA 1
16	14	PAHZZ	5961-00-842-6937 2N706	81349	TRANSISTOR		EA 10
16	15	PAHZZ	5962-00-403-6874 MC013G	04713	MM MICROLOGIC		EA 2
16	16	PAHZZ	5962-00-403-6875 7148-266	11071	INTEGRATED CIRCUIT		EA 2
16	17	PAHZZ	5961-00-408-0913 2N2102	02735	TRANSISTOR		EA 3
16	18	PAHZZ	5962-00-094-1839 MC010A	04713	MM MICROLOGIC		EA 3
16	19	PAHZZ	5961-00-043-4112 2N998	15015	TRANSISTOR		EA 1
16	20	PAHZZ	5961-00-950-1642 2N069	81349	TRANSISTOR		EA 2
16	21	PAHZZ	5961-00-226-8584 2N2222A	81349	MM MICROLOGIC		EA 3
16	22	PAHZZ	5905-00-681-9969 RC07GF332J	81349	RESISTOR, FIXED, COMPOSITION		EA 5
16	23	PAHZZ	5905-00-251-7514 RT22C2H203	81349	RESISTOR, VARIABLE, WIRE WOUND		EA 1
16	24	PAHZZ	5905-00-686-5998 RC07GF472J	81349	RESISTOR, FIXED, COMPOSITION		EA 7
16	25	PAHZZ	5905-00-723-5251 RC07GF222J	81349	RESISTOR, FIXED, COMPOSITION		EA 3
16	26	PAHZZ	5905-00-683-2242 RC07GF471J	81349	RESISTOR, FIXED, COMPOSITION		EA 2
16	27	PAHZZ	5905-00-683-2238 RC07GF103J	81349	RESISTOR, FIXED, COMPOSITION		EA 4
16	28	PAHZZ	5905-00-681-0818 RC07GF153J	81349	RESISTOR, FIXED, COMPOSITION		EA 1
16	29	PAHZZ	5905-00-683-2236 RC07GF391J	81349	RESISTOR, FIXED, COMPOSITION		EA 4
16	30	PAHZZ	5905-00-687-0002 RC07GF223J	81349	RESISTOR, FIXED, COMPOSITION		EA 1
16	31	PAHZZ	5905-00-681-9021 RC07GF024J	81349	RESISTOR, FIXED, COMPOSITION		EA 1
16	32	PAHZZ	5905-00-681-8817 RC07GF105J	81349	RESISTOR, FIXED, COMPOSITION		EA 1
16	33	PAHZZ	5905-00-683-2246 RC07GF473J	81349	RESISTOR, FIXED, COMPOSITION		EA 1
16	34	PAHZZ	5905-00-115-8055 RCR07G393JS	81349	RESISTOR, FIXED, COMPOSITION		EA 1
16	35	PAHZZ	5905-00-686-3798 RC07GF272J	81349	RESISTOR, FIXED, COMPOSITION		EA 5
16	36	PAHZZ	5905-00-686-3356 RC07GF023J	81349	RESISTOR, FIXED, COMPOSITION		EA 1
16	37	PAHZZ	5905-00-681-6462 RC07GF102J	81349	RESISTOR, FIXED, COMPOSITION		EA 6
16	38	PAHZZ	5905-00-683-2240 RC07GF221J	81349	RESISTOR, FIXED, COMPOSITION		EA 2

GROUP 060201 LOGIC BOARD ASSEMBLY
(A1A5A2A2)

SECTION II

TM 11-6760-228-34P-1

(1) ILLUSTRATION		(2)	(3)	(4)	(5)	(6) DESCRIPTION	(7) QTY INC IN UNIT	(8) QTY INC IN UNIT
(a) FIG NO.	(b) ITEM NO.	(c) SBR CODE	NATIONAL STOCK NUMBER	PART NUMBER	FCOM	USABLE QN CODE	U/M	UNIT
16	39	PAMZZ	5905-00-975-1138	RM67-151	81340	RESISTOR, FIXED, WIRE MOUNT	EA	1
16	40	PAMZZ	5905-00-686-3901	RC07GF333J	81340	RESISTOR, FIXED, COMPOSITION	EA	1
16	41	PAMZZ	5905-00-646-9994	RC07GF122J	81340	RESISTOR, FIXED, COMPOSITION	EA	5
16	42	PAMZZ	5905-00-726-4413	RC07GF123J	81340	RESISTOR, FIXED, COMPOSITION	EA	2
16	43	PAMZZ	5905-00-800-0179	RC07GF563J	81340	RESISTOR, FIXED, COMPOSITION	EA	1
16	44	PAMZZ	5905-00-683-7721	RC07GF101J	81340	RESISTOR, FIXED, COMPOSITION	EA	1
16	45	PAMZZ	5905-00-886-3838	RC07GF273J	81340	RESISTOR, FIXED, COMPOSITION	EA	1
16	46	1EMZZ		252003	88245	TERMINAL	EA	6
16	47	1EMHH		7146-213	11871	PRINTED BOARD ASSEMBLY	EA	1
16	48	1EMZZ		7146-213-1	11871	BOARD, PRINTED	EA	1
16	49	PAMZZ	5999-00-872-8560	10030AP	07047	PAD, TRANSISTOR	EA	13
16	50	PAMZZ	5999-00-932-9355	10030AP	07047	PAD, TRANSISTOR	EA	3
16	51	PAMZZ	5999-00-963-6930	10030AP	07047	PAD, TRANSISTOR	EA	5



NOTE: FOR COMPLETE REFERENCE DESIGNATION PREFIX WITH A1A5A2A3.

EL2JY018

Figure 17. Voltage Control Board Assembly (A1A5A2A3) (Sheet 1 of 2).

REF. DES.	ITEM NO.	REF. DES.	ITEM NO.	REF. DES.	ITEM NO.	REF. DES.	ITEM NO.
C1	1	Q3	14	R9	23	R29	25
C2	2	Q4	14	R10	24	R30	25
C3	3	Q5	14	R11	25	R31	25
C4	4	Q6	15	R12	25	R32	29
C5	5	Q7	15	R13	25	R33	28
C6	5	Q8	16	R14	26	R34	17
C7	6	Q9	15	R15	25	R35	17
C8	6	Q10	15	R16	27	R36	17
C9	6	Q11	15	R17	28	R37	24
C10	6	Q12	15	R18	29	T1	34
CR1	7	Q13	15	R19	29		
CR2	8	Q14	14	R20	29		
CR3	9	R1	17	R21	30		
CR4	9	R2	17	R22	31		
CR5	9	R3	17	R23	32		
CR6	10	R4	18	R24	31		
J1	11	R5	19	R25	32		
J2	12	R6	20	R26	31		
Q1	13	R7	21	R27	32		
Q2	14	R8	22	R28	33		

EL2JY019

Figure 17. Voltage Control Board Assembly (A1A5A2A3) (Sheet 2 of 2).

SECTION II

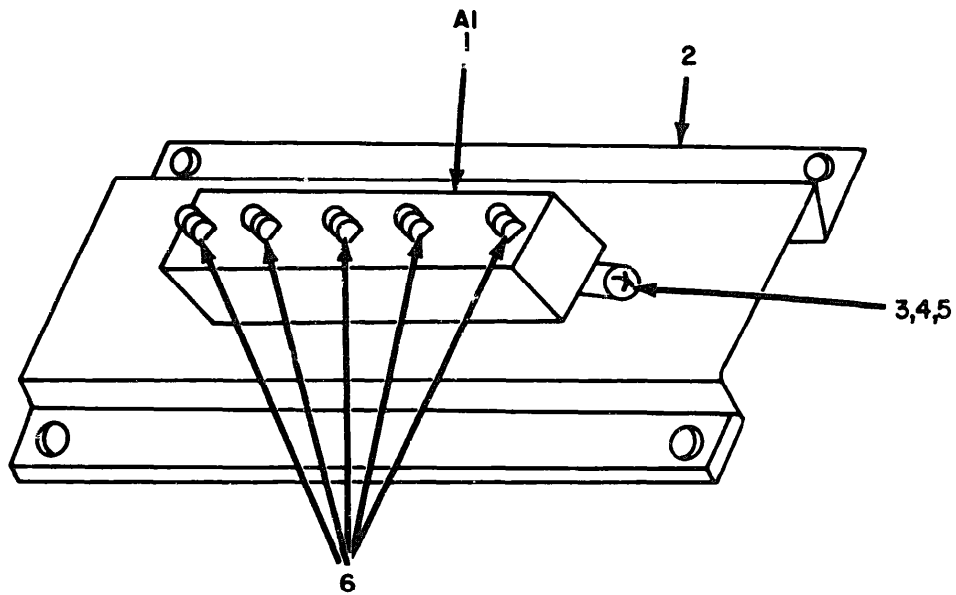
TM 11-6760-228-34P-1

(1) ILLUSTRATION		(2)	(3)	(4)	(5)	(6)	(7)	(8)
(a) FIG NO.	(b) ITEM NO.	SNR CODE	NATIONAL STOCK NUMBER	PART NUMBER	FSCM	DESCRIPTION	QTY INC IN UNIT	U/M UNIT
17	1	PAMZZ	5910-00-725-8814	CL65CJ470MP3	81349	CAPACITOR, FIXED, ELECTROLYTIC	EA	1
17	2	PAMZZ	5910-00-010-2810	NC9006-09-6552	86001	CAPACITOR, FIXED, ELECTROLYTIC	EA	1
17	3	XDHZZ		Z02E1-504E	99515	CAPACITOR, FIXED, DIELECTRIC	EA	1
17	4	XDHZZ		Z02E1-684	99515	CAPACITOR, FIXED, DIELECTRIC	EA	1
17	5	XDHZZ		Z02E1-104	99515	CAPACITOR, FIXED, DIELECTRIC	EA	2
17	6	PAMZZ	5910-00-484-2978	Z002-104K	14158	CAPACITOR, FIXED, CERAMIC	EA	4
17	7	PAMZZ	5961-00-850-9440	1N2964B	81349	SEMICONDUCTOR DEVICE, DIODE	EA	1
17	8	PAMZZ	5961-00-057-0386	1N3027A	81349	SEMICONDUCTOR DEVICE, DIODE	EA	1
17	9	PAMZZ	5961-00-577-6086	1N445	81349	SEMICONDUCTOR DEVICE, DIODE	EA	3
17	10	PAMZZ	5961-00-847-5245	1N3035B	81349	SEMICONDUCTOR DEVICE, DIODE	EA	1
17	11	PAMZZ	5935-00-958-1048	WD22P4	81312	CONNECTOR, RECEPTACLE, ELECTRICAL	EA	1
17	12	XDHZZ		PC111R02	17357	CONNECTOR, RECEPTACLE, ELECTRICAL	EA	1
17	13	PAMZZ	5910-00-984-3530	DE4-105	99515	TRANSISTOR	EA	1
17	14	PAMZZ	5961-00-837-7263	ZN697	81349	TRANSISTOR	EA	5
17	15	PAMZZ	596-00-842-6937	ZN706	81349	TRANSISTOR	EA	7
17	16	PAMZZ	5961-00-950-1642	ZN669	81349	TRANSISTOR	EA	1
17	17	PAMZZ	5905-00-933-6012	7321-276-213	11871	RESISTOR, FIXED, WIRE WOUND	EA	6
17	18	XDHZZ		7321-276-210	11871	RESISTOR, FIXED, WIRE WOUND	EA	1
17	19	PAMZZ	5905-00-279-2633	RC42GF820J	81349	RESISTOR, FIXED, COMPOSITION	EA	1
17	20	XDHZZ		7321-276-162	81349	RESISTOR, FIXED, WIRE WOUND	EA	1
17	21	PAMZZ	5905-00-253-1229	RC42GF331J	81349	RESISTOR, FIXED, COMPOSITION	EA	1
17	22	PAMZZ	5905-00-781-7123	RC20GF2R7J	81349	RESISTOR, FIXED, COMPOSITION OR	EA	1
17	22	XDHZZ		RC20GF2R4J	44655	RESISTOR, FIXED, COMPOSITION OR	EA	1
17	22	XDHZZ		RC20GF2R2J	44655	RESISTOR, FIXED, COMPOSITION OR	EA	1
17	22	XDHZZ		RC20GF2R0J	44655	RESISTOR, FIXED, COMPOSITION OR	EA	1
17	22	XDHZZ		RC20GF1R8J	44655	RESISTOR, FIXED, COMPOSITION OR	EA	1
17	22	XDHZZ		RC20GF1R5J	44655	RESISTOR, FIXED, COMPOSITION OR	EA	1
17	22	PAMZZ	5905-00-125-0897	RC20GF1R2J	44655	RESISTOR, FIXED, COMPOSITION	EA	1
17	23	PAMZZ	5905-00-683-7723	RC07GF152J	81349	RESISTOR, FIXED, COMPOSITION	EA	1
17	24	PAMZZ	5905-00-681-6462	RC07GF102J	81349	RESISTOR, FIXED, COMPOSITION	EA	2
17	25	PAMZZ	5905-00-486-3798	RC07GF272J	44655	RESISTOR, FIXED, COMPOSITION	EA	7
17	26	PAMZZ	5905-00-683-2246	RC07GF473J	44655	RESISTOR, FIXED, COMPOSITION	EA	1
17	27	PAMZZ	5905-00-688-3738	RC07GF182J	81349	RESISTOR, FIXED, COMPOSITION	EA	1
17	28	PAMZZ	5905-00-683-2238	RC07GF103J	81349	RESISTOR, FIXED, COMPOSITION	EA	2
17	29	PAMZZ	5905-00-686-3838	RC07GF273J	44655	RESISTOR, FIXED, COMPOSITION	EA	4
17	30	PAMZZ	5905-00-686-3903	RC07GF333J	44655	RESISTOR, FIXED, COMPOSITION	EA	1
17	31	PAMZZ	5905-00-681-8957	RC07GF474J	44655	RESISTOR, FIXED, COMPOSITION	EA	3
17	32	PAMZZ	5905-00-681-9949	RC07GF332J	44655	RESISTOR, FIXED, COMPOSITION	EA	3

SECTION II

TM 11-6760-228-34P-1

(1) ILLUSTRATION		(2)	(3)	(4)	(5)	(6)	(7)	(8)
(a) FIG NO.	(b) ITEM NO.	SMR CODE	NATIONAL STOCK NUMBER	PART NUMBER	FORM	DESCRIPTION	U.S. ARMY CODE	QTY INC OR UNIT
17	33	PAMZ	5905-00-931-2023	RT22C2H103	01349	RESISTOR, VARIABLE, WIRE WOUND	EA	1
17	34	XDMZ		7148-248	11871	TRANSFORMER, BLOCKING, OSCILLATOR	EA	2
17	35	PAMZ	5999-00-963-6936	100300AP	07047	PAD, TRANSISTOR	EA	6
17	36	PAMZ	5999-00-672-0568	100450AP	07047	PAD, TRANSISTOR	EA	6
17	37	XDMZ		7148-211	11871	PRINTED BOARD	EA	1
17	38	PAMZ	6760-00-999-4634	7148-210	11871	PAD, TRANSISTOR	EA	2



**NOTE: FOR COMPLETE REFERENCE DESIGNATION
PREFIX WITH A1A5A2A1.**

EL2JY020

Figure 18. Rectifier Assembly (A1A5A2A1).

SECTION II

TM 11-6760-228-34P-1

(1) ILLUSTRATION		(2)	(3)	(4)	(5)	(6) DESCRIPTION	(7) USABLE ON CODE	(8) QTY INC IN UNIT
(a) FIG NO.	(b) ITEM NO.	SNR CODE	NATIONAL STOCK NUMBER	PART NUMBER	FSCM			
GROUP 060203 RECTIFIER ASSEMBLY (A1A5A2A1)								
18	1	PAFZZ	5961-00-235-3150	7148-253-1	11871	DIODE, HIGH VOLTAGE		EA 1
18	2	XDFZZ		7148-252	11871	BRACKET, ADAPTER		EA 1
18	3	PAFZZ	5305-00-054-6651	M551957-27	96906	SCREW, MACHINE		EA 2
18	4	PAFZZ	5310-00-880-5976	M515795-806	96906	WASHER, FLAT		EA 2
18	5	PAFZZ	5310-00-043-1754	M535337-79	96906	WASHER, LOCK		EA 2
18	6	PAFZZ	5940-00-583-7122	495-12-11-016	71785	TERMINAL, LUG		EA 5

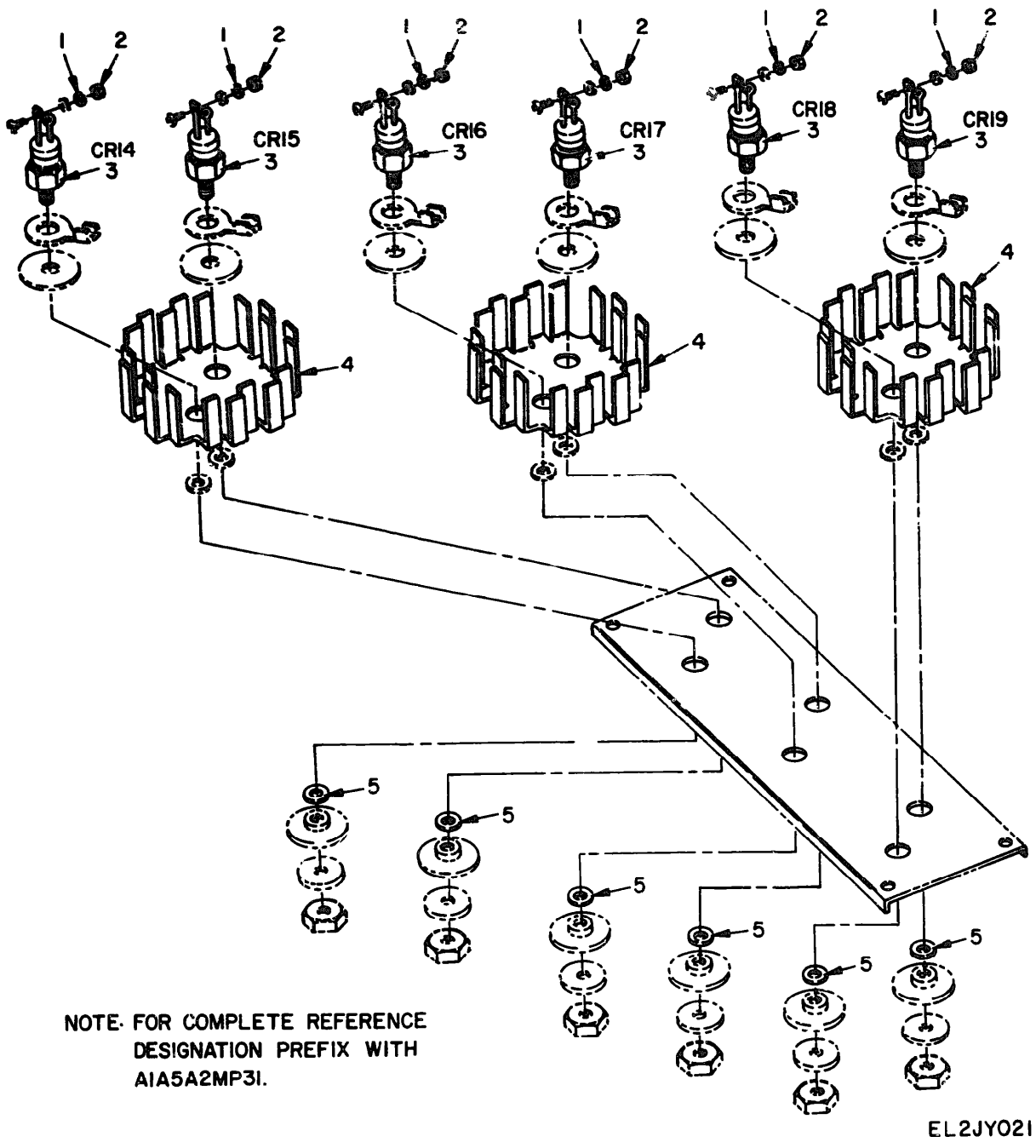
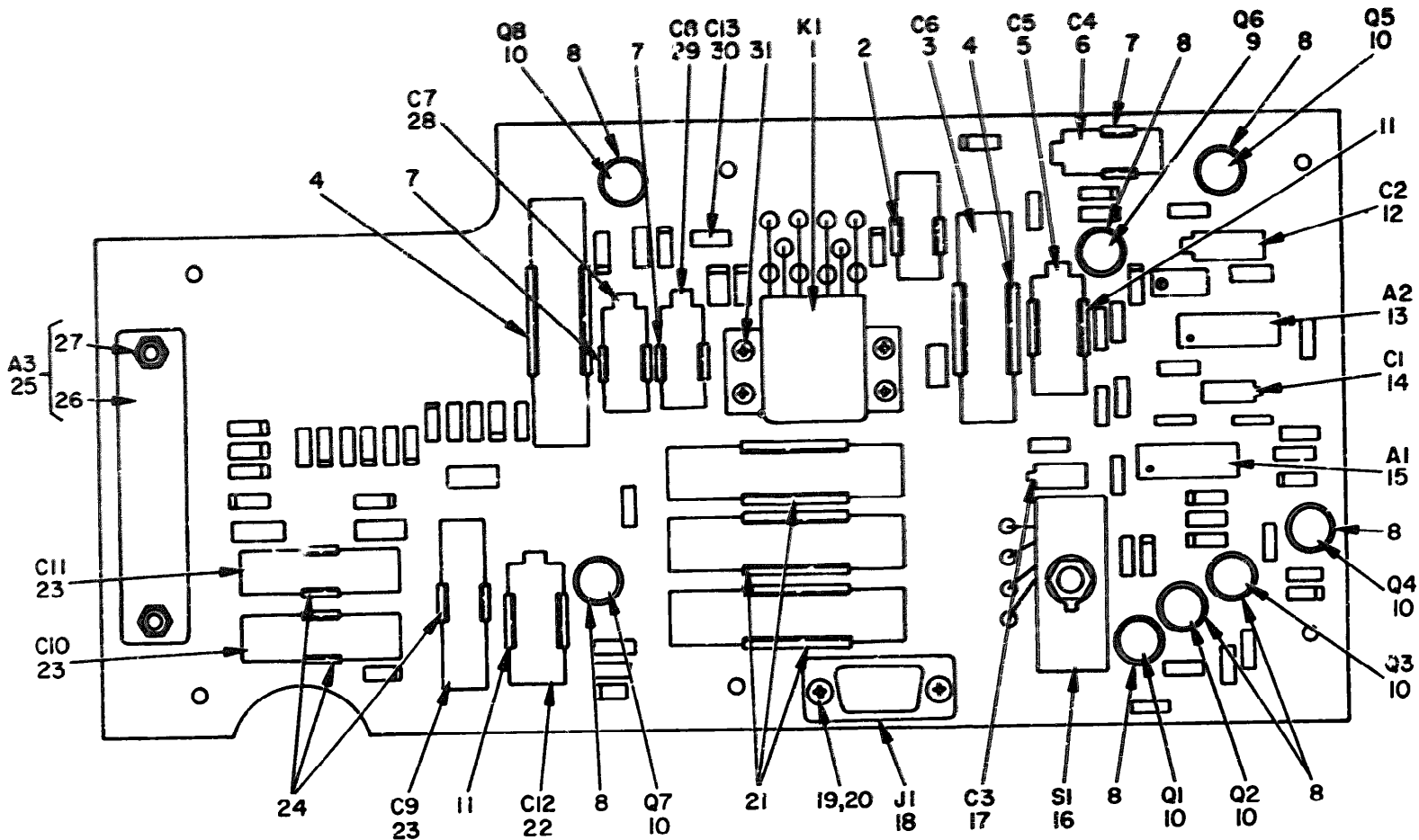


Figure 19. SCR Control Assembly (A1A5A2MP31).

SECTION II

TM 11-6760-228-34P-1

(1) ILLUSTRATION		(2)	(3)	(4)	(5)	(6) DESCRIPTION	(7)	(8)
(a) FIG NO.	(b) ITEM NO.	SMR CODE	NATIONAL STOCK NUMBER	PART NUMBER	PSCN		UNIT	QTY
GROUP 060204 SCR CONTROL ASSEMBLY (A1A5A2MP3)								
19	1	PAFZZ	5310-00-616-3555	MS35333-7L	96706	WASHER, LOCK	EA	6
19	2	XDFZZ		AN340C632	88044	NUT, FLANG, HEXAGON	EA	6
19	3	PAFZZ	5961-00-999-4625	2N590	11877	TRANSISTOR	EA	6
19	4	PAFZZ	5995-130-5801	7140-140	11871	HEAT SINK, ELECTRICAL-ELECTRONIC COMPONENT	EA	3
19	5	XDFZZ		TW516-25	68289	WASHER, FLAT	EA	6



NOTE: FOR COMPLETE REFERENCE DESIGNATION PREFIX WITH A1A6A2.

EL2JY022

Figure 20. Rate Limit/Primary Power Disconnect Board Assembly (A1A6A2).

SECTION II

TM 11-6760-228-34P-1

(1) ILLUSTRATION		(2)	(3)	(4)	(5)	(6) DESCRIPTION	(7)	(8)
(a) FIG NO.	(b) ITEM NO.	SMR CODE	NATIONAL STOCK NUMBER	PART NUMBER	PSCN		QTY INC IN UNIT	UNIT
20	1	PADZZ	5945-00-321-7978	M5757-21-004	81349	RELAY, ARMATURE	EA	1
20	2	PADZZ	5910-00-879-1586	6024-2CC	91506	RETAINER, CAPACITOR	EA	1
20	3	XDOZZ		M39018-01-0136	81349	CAPACITOR, FIXED, TANTALUM	EA	1
20	4	XDOZZ		6001-66CC	91506	CLIP, SPRING TENSION	EA	2
20	5	PADZZ	5910-00-993-2353	M39003-01-2309	81349	CAPACITOR, FIXED, TANTALUM	EA	1
20	6	PADZZ	5910-00-021-8076	M39003-01-2371	81349	CAPACITOR, FIXED, ELECTROLYTIC	EA	1
20	7	PADZZ	5340-00-951-1034	6008-12CC	91506	CLIP, SPRING TENSION	EA	3
20	8	PADZZ	5999-00-956-4973	10044DAP	07047	MOUNTING PAD	EA	8
20	9	PADZZ	5961-00-925-3777	2N2907A	81349	TRANSISTOR	EA	1
20	10	PADZZ	5961-00-951-8757	2N2222A	81349	TRANSISTOR	EA	7
20	11	PADZZ	5340-00-959-8205	6005-6CC	91506	CLIP, SPRING TENSION	EA	2
20	12	PADZZ	5910-00-935-3511	M39003-01-2286	81349	CAPACITOR, FIXED, ELECTROLYTIC	EA	1
20	13	PADZZ	5962-00-762-0613	3428L	15818	INTEGRATED CIRCUIT	EA	1
20	14	PADZZ	5910-00-078-7227	M39003-01-2283	81349	CAPACITOR, FIXED, ELECTROLYTIC	EA	1
20	15	PADZZ	5962-00-782-8296	3028L	15818	INTEGRATED CIRCUIT	EA	1
20	16	PADZZ	5930-00-306-4181	PH6	04009	SWITCH, PUSH	EA	1
20	17	PADZZ	5910-00-068-4298	M39003-01-2356	81349	CAPACITOR, FIXED, ELECTROLYTIC	EA	1
20	18	PADZZ	5935-00-308-7669	DEM49PB	71466	CONNECTOR, ELECTRICAL	EA	1
20	19	PADZZ	5305-00-054-5651	M551957-17	96906	SCREW, MACHINE	EA	2
20	20	PADZZ	5310-00-614-3500	68-1660-40	72962	NUT, SELF-LOCKING	EA	5
20	21	XDOZZ		6008-36CC	91506	CLIP, SPRING TENSION	EA	3
20	22	PADZZ	5910-00-998-4105	M39003-01-2312	81349	CAPACITOR, FIXED, TANTALUM	EA	1
20	23	XDOZZ		M39022-01-1141	81349	CAPACITOR, FIXED, TANTALUM	EA	3
20	24	XDOZZ		6005-1CC	91506	CLIP, SPRING TENSION	EA	3
20	25	XDC70		7148-276	11871	BRACKET AND NUT ASSEMBLY	EA	1
20	26	XDOZZ		7148-276-1	11871	BRACKET	EA	1
20	27	PADZZ	5305-00-054-5648	M551957-16	96906	SCREW, MACHINE	EA	2
20	28	PADZZ	5910-00-068-3884	M39003-01-2374	81349	CAPACITOR, FIXED, TANTALUM	EA	1
20	29	PADZZ	5910-00-858-5189	M39003-01-2377	81349	CAPACITOR, FIXED, TANTALUM	EA	1
20	30	XDOZZ		M39014-02-0403	81349	CAPACITOR, FIXED, CERAMIC	EA	1
20	31	PADZZ	5305-00-054-5647	M551957-13	96906	SCREW, MACHINE	EA	4

GROUP 060205 RATE/PRIMARY POWER
DISCONNECT BOARD ASSEMBLY
(A1A6A2)

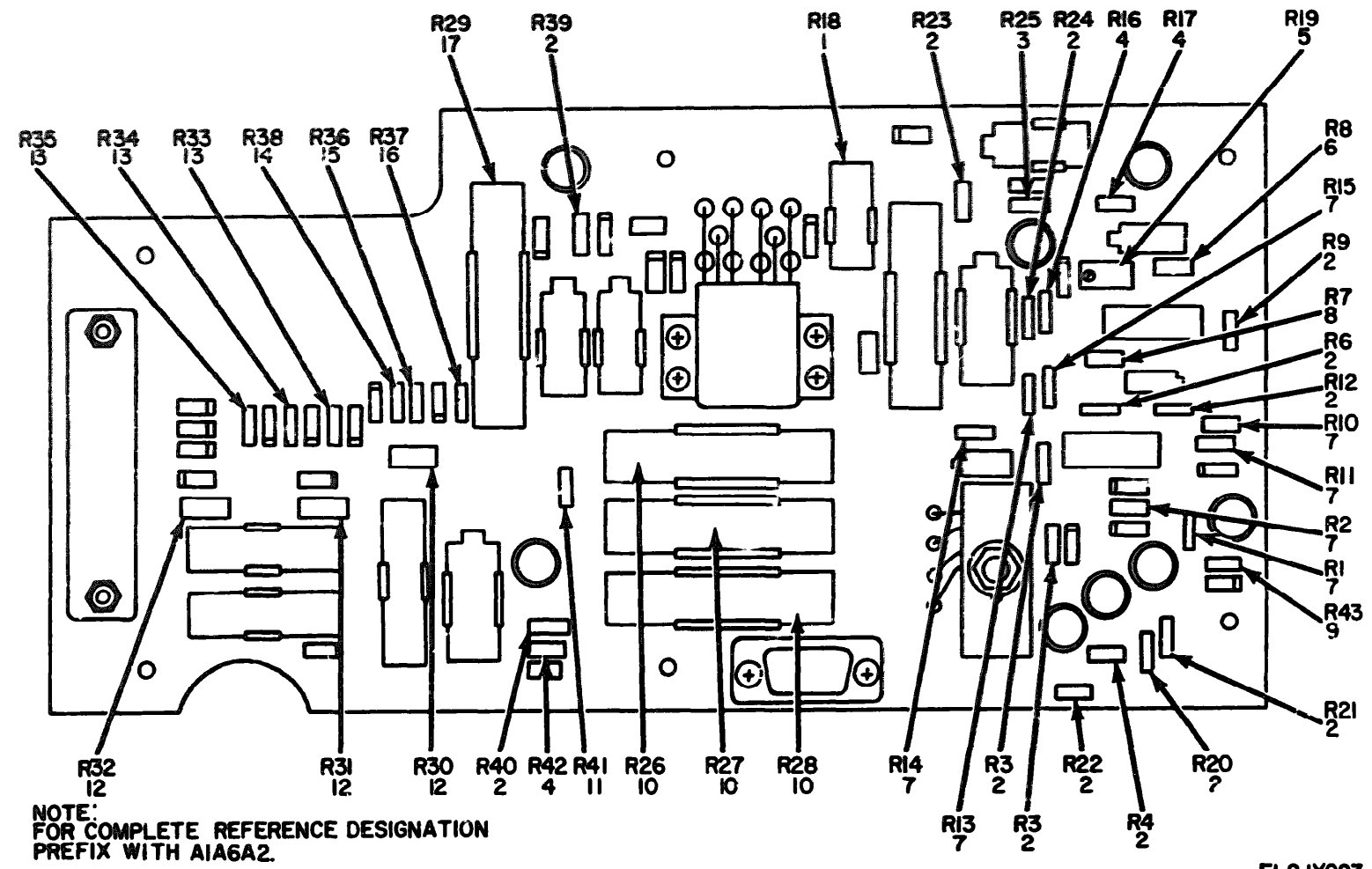
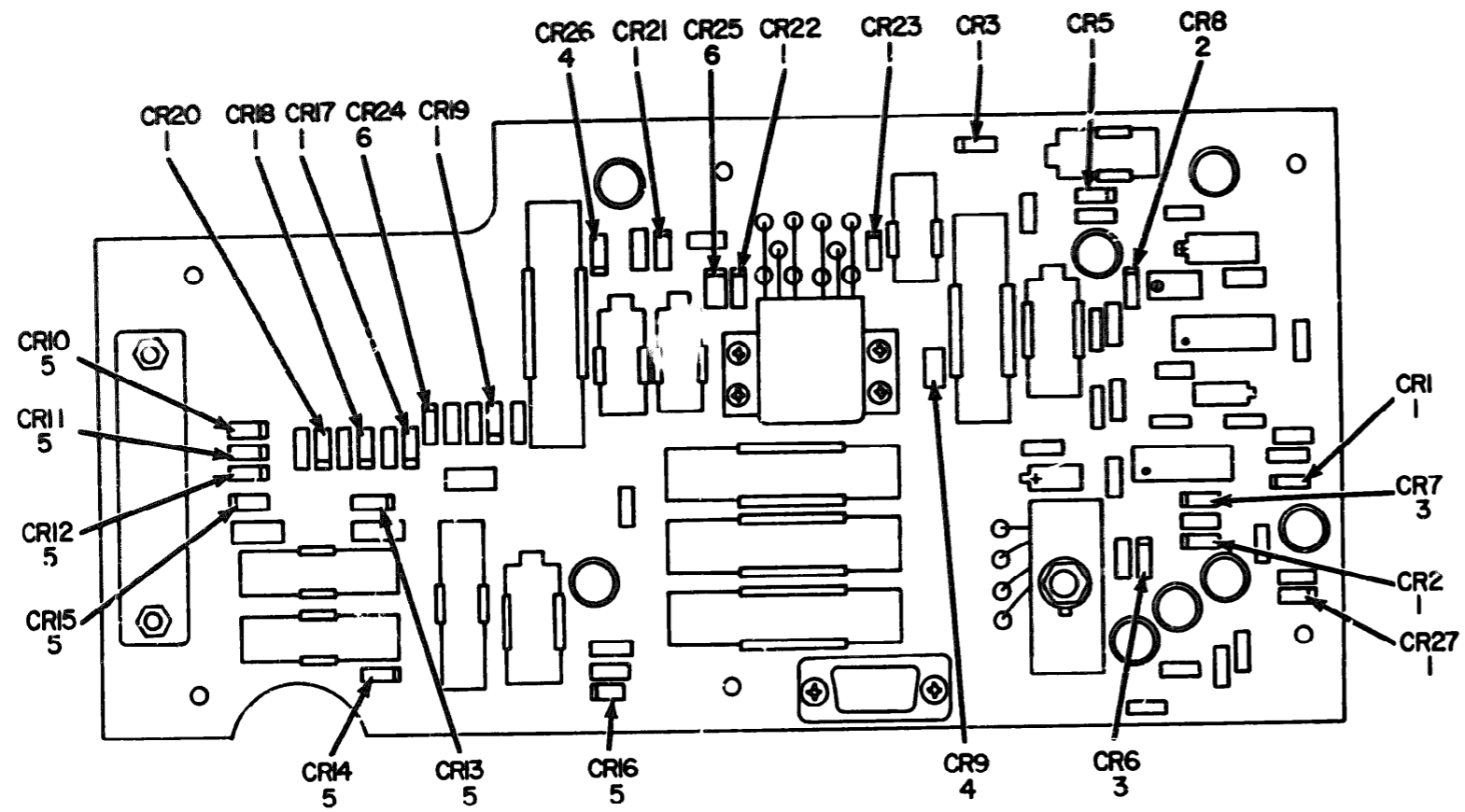


Figure 21. Rate Limit/Primary Power Disconnect Board Assembly (A1A6A2), Resistor Location.

SECTION II

TM 11-6760-228-34P-1

(1) ILLUSTRATION		(2)	(3)	(4)	(5)	(6)	(7)	(8)
(a) FIG NO.	(b) ITEM NO.	QMR CODE	NATIONAL STOCK NUMBER	PART NUMBER	PSCN	DESCRIPTION	U. M.	QTY INC IN UNIT
							U. M.	UNIT
21	1	PAD22	5905-00-504-6897	ACR02G391JS	01349	RESISTOR, FIXED, COMPOSITION	EA	1
21	2	PAD22	5905-00-108-5458	ACR07G103JS	01349	RESISTOR, FIXED, COMPOSITION	EA	13
21	3	PAD22	5905-00-141-1183	ACR07G101JS	01349	RESISTOR, FIXED, COMPOSITION	EA	1
21	4	PAD22	5905-00-110-7420	ACR07G102JS	01349	RESISTOR, FIXED, COMPOSITION	EA	3
21	5	PAD22	5905-00-412-3429	RJ24C9503	01349	RESISTOR, VARIABLE	EA	1
21	6	PAD22	5905-00-121-9920	ACR07G303JS	01349	RESISTOR, FIXED, COMPOSITION	EA	1
21	7	PAD22	5905-00-105-7764	ACR07G222JS	01349	RESISTOR, FIXED, COMPOSITION	EA	7
21	8	PAD22	5905-00-119-3504	ACR07G273JS	01349	RESISTOR, FIXED, COMPOSITION	EA	1
21	9	PAD22	5905-00-111-4727	ACR07G272JS	01349	RESISTOR, FIXED, COMPOSITION	EA	3
21	10	PAD22	5905-00-913-9119	RH70U1000F	01349	RESISTOR, VARIABLE, MCN WIRE WOUND	EA	3
21	11	PAD22	5905-00-131-1255	ACR07G122JS	01349	RESISTOR, FIXED, COMPOSITION	EA	1
21	12	PAD22	5905-00-114-5441	PCR20G563JS	01349	RESISTOR, FIXED, COMPOSITION	EA	3
21	13	PAD22	5905-00-106-1278	ACR07G123JS	01349	RESISTOR, FIXED, COMPOSITION	EA	3
21	14	PAD22	5905-00-400-4528	ACR07G124JS	01349	RESISTOR, FIXED, COMPOSITION	EA	1
21	15	PAD22	5905-00-435-6374	ACR07G023JS	01349	RESISTOR, FIXED, COMPOSITION	EA	1
21	16	PAD22	5905-00-141-0744	ACR07G562JS	01349	RESISTOR, FIXED, COMPOSITION	EA	1
21	17	PAD22	5905-00-901-4699	RV68V102	01349	RESISTOR, VARIABLE	EA	1



NOTE: FOR COMPLETE REFERENCE DESIGNATION
PREFIX WITH A1A6A2.

EL2JY024

Figure 22. Rate Limit/Primary Power Disconnect Board Assembly (A1A6A2), Diode Location.

SECTION II

TM 11-6760-228-34P-1

(1) ILLUSTRATION		(2)	(3)	(4)	(5)	(6) DESCRIPTION	(7) CYCLE OR CODE	(8) QTY INC IN UNIT
(a) FIG NO.	(b) ITEM NO.	SMA CODE	NATIONAL STOCK NUMBER	PART NUMBER	FSCM			
22	1	PADZZ	5961-00-577-6084	1N645	81349	SEMICONDUCTOR DEVICE, DIODE		EA 12
22	2	PADZZ	5961-00-851-8296	1N467B	81349	SEMICONDUCTOR DEVICE, DIODE		EA 8
22	3	PADZZ	5961-00-752-6121	1N753A	81349	SEMICONDUCTOR DEVICE, DIODE		EA 2
22	4	PADZZ	5961-00-846-9157	1N759A	81349	SEMICONDUCTOR DEVICE, DIODE		EA 2
22	5	PADZZ	5961-00-723-3602	1N3612	81349	SEMICONDUCTOR DEVICE, DIODE		EA 7
22	6	PADZZ	5961-00-192-6107	1N4969	81349	SEMICONDUCTOR DEVICE, DIODE		EA 2

SECTION IV

NATIONAL STOCK NUMBER AND PART NUMBER INDEX

TM 11-6760-228-34P-1

NOTE: LATEST NATIONAL STOCK NUMBER AND PART NUMBER ASSIGNMENTS ARE INCLUDED AT END OF INDEX

STOCK NUMBER	FIGURE NO.	ITEM NO.	STOCK NUMBER	FIGURE NO.	ITEM NO.
6760-00-015-7364	7	4	5905-00-253-1229	17	21
5910-00-021-8076	20	6	5905-00-256-3361	12	17
5305-00-022-7058	8	12	5905-00-259-3767	14	24
5310-00-027-7247	4	17	5310-00-271-4645	13	35
5310-00-027-7247	10	49	5325-00-275-4480	4	6
5310-00-027-7247	14	50	5325-00-276-6082	10	13
5310-00-027-7247	15	2	5905-00-279-1719	15	22
5310-00-043-1754	11	16	5905-00-279-1916	14	24
5310-00-043-1754	13	2	5905-00-279-1921	14	24
5310-00-043-1754	18	5	5905-00-279-1927	14	24
5961-00-043-4112	16	19	5905-00-279-1930	12	11
5930-00-044-4144	7	11	5905-00-279-1930	14	27
5305-00-054-5637	14	59	5905-00-279-1934	14	24
5305-00-054-5647	20	31	5905-00-279-1943	14	24
5305-00-054-5648	20	27	5905-00-279-1946	14	24
5305-00-054-5649	11	10	5905-00-279-1954	14	24
5305-00-054-5649	14	28	5905-00-279-2433	17	19
5305-00-054-5651	13	39	5905-00-279-3503	12	16
5305-00-054-5651	20	19	5325-00-281-8638	6	8
5305-00-054-6669	9	29	5325-00-282-8138	4	5
5961-00-057-0386	17	8	5310-00-283-7584	14	60
5315-00-058-9727	13	28	6210-00-284-0289	4	25
5310-00-061-8867	10	17	5310-00-285-7085	4	14
5961-00-064-2379	15	18	5340-00-290-7273	14	11
5910-00-068-3084	20	28	5315-00-291-5471	13	25
5910-00-068-4298	20	17	5325-00-291-9360	4	19
5305-00-068-8431	10	25	5905-00-299-2022	12	9
5975-00-074-2072	12	22	5935-00-306-3225	14	57
5910-00-078-7237	20	14	5935-00-306-3226	14	63
5310-00-081-8087	12	27	5930-00-306-4181	20	16
5961-00-085-4037	12	24	5945-00-321-7978	20	1
5910-00-089-0672	16	7	5905-00-400-4528	21	14
5962-00-094-1839	16	18	5962-00-403-6874	16	15
5905-00-105-7764	21	7	5962-00-403-6875	16	16
5905-00-106-1278	21	13	5905-00-412-3625	21	5
5905-00-106-3666	21	2	4030-00-431-5536	2	6
5905-00-110-7620	21	4	5905-00-435-6374	21	15
5905-00-111-4727	21	9	6760-00-455-6102	7	21
5905-00-114-5441	21	12	5330-00-484-1774	8	25
5905-00-119-3504	21	8	5910-00-484-2978	16	2
5905-00-121-9920	21	6	5910-00-484-2978	17	6
5905-00-125-0897	17	22	5307-00-485-0985	3	15
5999-00-130-5807	19	4	5355-00-486-3399	5	2
5905-00-131-1255	21	11	5340-00-488-3941	13	3
6760-00-133-4106	13	17	5305-00-494-2691	10	10
5365-00-133-4109	10	16	5340-00-494-2824	7	13
5365-00-133-4110	10	15	5961-00-494-8999	11	3
5365-00-133-4111	10	14	5905-00-504-6897	21	1
5365-00-133-4112	10	4	5360-00-508-5934	3	22
5365-00-133-4113	10	36	5930-00-319-8144	10	37
6760-00-133-4114	13	19	5935-00-520-5334	2	4
5920-00-134-0328	13	9	5310-00-531-9514	5	11
5915-00-134-0641	9	9	5310-00-531-9515	9	2
5970-00-134-5415	13	13	5325-00-543-2418	4	21
6760-00-135-0474	7	15	5305-00-543-2804	6	2
6760-00-135-0475	10	35	5940-00-552-3635	12	25
5961-00-136-3909	12	8	5940-00-553-2782	2	10
5999-00-136-4978	14	23	5310-00-558-6207	13	34
5905-00-141-0744	21	16	5961-00-577-6084	11	6
5905-00-141-1183	21	3	5961-00-577-6084	15	16
5920-00-142-7439	15	34	5961-00-577-6084	16	10
5940-00-143-4637	15	35	5961-00-577-6084	17	9
6210-00-145-1373	10	19	5961-00-577-6084	22	1
6240-00-155-7836	4	23	5325-00-582-3601	9	34
5940-00-156-7344	14	26	5940-00-583-7122	18	6
5940-00-156-7344	14	25	5315-00-584-0257	5	5
5310-00-167-0804	7	9	5310-00-595-6211	10	34
5325-00-171-4680	4	12	5310-00-595-6211	14	18
6760-00-176-0567	7	12	5310-00-596-7693	8	31
5961-00-176-4445	11	17	5365-00-598-5287	2	2
5905-00-192-0390	15	17	5310-00-614-3500	20	20
5961-00-192-6107	22	6	5310-00-616-3555	19	1
5905-00-195-6806	12	14	5310-00-622-1724	15	31
5360-00-201-0272	4	20	5905-00-636-6702	12	12
6760-00-204-2976	14	61	5320-00-637-5422	15	9
5961-00-226-8584	16	21	5920-00-655-1154	15	32
5961-00-235-3150	18	1	5930-00-655-1575	4	15
5950-00-241-9311	11	4	5310-00-655-9401	15	6
5905-00-251-7514	16	23	5905-00-681-6462	16	37
			5905-00-681-6462	17	24

STOCK NUMBER	FIGURE NO.	ITEM NO.	STOCK NUMBER	FIGURE NO.	ITEM NO.
5905-00-681-8817	16	32	5935-00-846-3737	8	10
5905-00-681-8818	16	28	5961-00-846-9157	22	4
5905-00-681-8957	17	31	5961-00-847-5245	17	10
5905-00-681-9021	16	31	5961-00-850-9440	17	7
5905-00-681-9969	16	22	5961-00-851-8296	22	2
5905-00-681-9969	17	32	5920-00-851-9476	15	30
5315-00-682-1733	9	23	5935-00-652-1860	9	6
5940-00-682-9080	14	55	5961-00-855-1551	12	7
59015-00-683-2236	16	29	5910-40-858-5189	20	29
5905-00-683-2238	16	27	5999-00-872-0560	16	49
5905-00-683-2238	17	28	5999-00-872-0560	17	36
5905-00-683-2240	16	38	6760-00-878-5354	1	1
5905-00-683-2242	16	26	6760-00-878-5355	1	3
5905-00-683-2246	16	33	6760-00-878-5364	1	5
5905-00-683-2246	17	26	5910-00-879-1586	20	2
5905-00-683-7721	16	44	5310-00-880-5976	11	15
5905-00-683-7723	17	23	5310-00-880-5976	18	4
5905-00-686-3356	16	36	5310-00-880-5978	3	14
5905-00-686-3798	16	35	5925-00-881-2465	7	25
5905-00-686-3798	17	25	5935-00-883-5871	8	29
5905-00-686-3038	16	45	5905-00-901-4699	21	17
5905-00-686-3838	17	29	5910-00-904-8527	16	3
5905-00-686-3903	16	40	5961-00-912-4238	14	31
5905-00-686-3903	17	30	5905-00-913-8334	15	28
5905-00-686-9994	16	41	5905-00-913-9119	21	10
5905-00-686-9998	16	24	5961-00-925-3777	20	9
5905-00-687-0002	16	30	5305-00-925-4774	14	42
5310-00-687-6398	13	43	5310-00-426-1835	10	43
5905-00-688-3738	17	27	5310-00-928-2690	14	58
5975-00-705-5841	3	24	5905-00-931-2023	17	33
5940-00-722-4351	2	3	5999-00-932-9055	16	50
5310-00-722-5998	12	29	5905-00-933-6012	17	17
5310-00-722-5998	13	7	5950-00-933-8685	14	40
5961-00-723-3602	22	5	5910-00-935-3511	20	12
5905-00-723-5251	16	25	5305-00-939-0485	14	39
5365-00-724-3432	14	30	5935-00-939-9763	16	11
5905-00-726-4413	16	42	5310-00-941-6629	14	37
5975-00-727-5153	2	7	5961-00-950-1642	16	20
5975-00-727-5153	12	26	5961-00-950-1642	17	16
5920-00-729-8930	15	29	5961-00-950-6577	16	9
5310-00-734-5661	10	38	5340-00-951-1034	20	7
5310-00-734-5661	13	40	5961-00-951-8757	20	10
5340-00-731-8279	10	6	5999-00-956-4973	20	8
5961-00-752-6121	22	3	5935-00-958-1848	17	11
5961-00-752-6163	16	8	5305-00-958-6517	14	47
5310-00-753-4107	14	26	5999-00-963-6930	16	51
5962-00-762-0613	20	13	5999-00-963-6930	17	35
5340-00-775-0200	3	12	5935-00-964-3550	15	15
5905-00-781-7123	17	22	6210-00-965-1491	4	24
5310-00-782-1349	10	28	5905-00-975-1138	16	39
5962-00-782-8296	20	15	5910-00-984-3530	15	20
5935-00-795-7438	7	24	5910-00-984-3530	17	13
6760-00-797-7829	10	33	5961-00-932-3492	1	8
5905-00-800-0179	16	43	5910-00-993-2353	20	5
5905-00-802-8478	14	21	5910-00-998-4105	20	22
5990-00-808-7468	10	11	5995-00-999-4376	1	2
5961-00-808-8398	16	13	5910-00-999-4379	10	1
5310-00-815-0653	8	27	6240-00-999-4421	13	18
5910-00-817-9216	11	8	5950-00-999-4427	11	2
5935-00-819-1147	9	20	6130-00-999-4448	11	13
5961-00-825-8867	15	19	6760-00-999-4619	14	5
5340-00-827-6389	15	7	5945-00-999-4631	15	13
5310-00-827-9286	11	11	6760-00-999-4634	14	17
5961-00-837-7262	17	14	6760-00-999-4634	17	38
5961-00-842-6937	16	14	6760-00-999-4744	7	28
5961-00-842-6931	17	15	6760-00-999-4745	7	23
5905-00-845-9431	12	10			

PART NUMBER	FSCN	FIG. NO.	ITEM NO.	PART NUMBER	FSCN	FIG. NO.	ITEM NO.
AJ3-25				AN960C416	88044	9	2
AN340C632	72794	4	5	AN960C6	88044	5	11
AN340C832	88044	19	2	AN960C616	88044	7	9
AN3420-12A	88044	13	35	AN960C8L	88044	13	34
AN4CH6A	88044	2	2	A3250-12	76665	14	25
AN4CH7A	88044	8	36	A51043	08289	12	24
AN565DC1032H16	88044	8	1	CAV10-147P	11871	6	3
AN960C4	88044	13	31	CAV10-164P	11871	3	26
		10	28				

SECTION IV

NATIONAL STOCK NUMBER AND PART NUMBER INDEX

TM 11-6760-228-34P-1

PART NUMBER	FSCM	FIG. NO.	ITEM NO.	PART NUMBER	FSCM	FIG. NO.	ITEM NO.
CAV10-20P	11871	14	26	HS250-49S-CE1	98003	3	6
CAV10-220P	11871	13	45	H945LSIRS	98003	3	17
CAV10-34P	11871	14	30	LA-359A	80058	1	6
CAV10-52P	11871	3	19	LA-388A	80058	1	4
CAV10-53P	11871	3	9	LA-389A	80058	1	7
CAV10-69P	11871	3	8	LA-390A	80058	1	2
CAV10-76P	11871	5	12	LA-391A	80058	1	5
CAV10-77P	11871	5	7	LA-392A	80058	1	1
CAV10-84P	11871	3	5	LA-394A	80058	1	3
CAV176-318	11871	2	1	LHTA3300-82	72962	8	28
CAV25-11P	11871	14	12	LHTM2860-62	72962	13	10
CAV25-6	11871	10	46	LQDP20	79326	2	4
CAV70-1032-8P	11871	11	9	MC810G	04713	16	18
CAV70-1032-9P	11871	14	20	MC813G	04713	16	15
CAV70-2-12P	11871	15	26	MS15795-803	96906	10	34
CAV70-2-8P	11871	15	25	MS15795-803	96906	14	18
				MS15795-805	96906	12	29
CAV70-4-5P	11871	13	14	MS15795-805	96906	13	7
CAV70-4-5P	11871	14	1	MS15795-806	96906	11	15
CAV70-4-6P	11871	11	10	MS15795-806	96906	18	4
CAV70-4-6P	11871	14	28	MS15795-807	96906	3	14
CAV70-4-7P	11871	13	39	MS16106-1	96906	10	37
CAV70-4-8P	11871	13	47	MS16106-5	96906	7	11
CAV70-6-14P	11871	10	2	MS16555-646	96906	9	23
CAV70-6-15P	11871	13	48	MS16562-189	96906	13	25
CAV70-6-16P	11871	13	6	MS16562-198	96906	5	5
				MS16562-209	96906	13	28
				MS16624-4043	96906	13	42
				MS16996-12	96906	14	47
				MS16996-13	96906	10	25
CAV70-6-6P	11871	15	24	MS20364D632A	96906	14	13
CAV70-6-7P	11871	10	31	MS20364D832A	96906	13	36
CAV70-6-8P	11871	10	45	MS20365-440A	96906	4	14
CAV70-6-8P	11871	14	10	MS20365-632A	96906	12	27
CAV70-6-9P	11871	13	1	MS20470A3-3	96906	4	11
CAV70-6-9P	11871	14	33	MS20470A3-4	96906	15	9
CAV70-8-18P	11871	3	13	MS21332-1	96906	6	8
CAV70-8-20P	11871	3	25	MS25010C118327	96906	4	24
CAV70-8-8P	11871	14	65	MS25041-4	96906	4	25
CAV71C2-8G	11871	14	7	MS25082-5	96906	13	43
CAV71C4-4G	11871	14	8	MS25237-327	96906	4	23
CAV73-6-4G	11871	10	39	MS25381-1	96906	4	28
CAV73C10-8G	11871	14	19	MS3102E20-33P	96906	9	8
CAV73C4-6G	11871	4	2	MS35059-22	96906	4	15
CAV73C4-7G	11871	4	3	MS35233-15	96906	8	26
CAV73C4-7G	11871	10	5				
CAV73C6-5G	11871	5	10	MS35233-28	96906	7	18
CAV73C6-6G	11871	14	64	MS35233-30	96906	14	31
CKAT682K	14158	16	6	MS35233-42	96906	8	17
CL258H301UP3	81349	11	8	MS35233-44	96906	9	29
CL65C1470MP3	81749	17	1	MS35233-45	96906	8	4
CP140-4	11159	10	6	MS35233-46	96906	9	41
CTM154VS-K	81349	12	3	MS35233-69	96906	6	2
C1	06229	3	12	MS35233-8	96906	8	13
DBKNR25S	71468	14	57	MS35249-12	96906	9	15
DBMM25P8	71468	14	63	MS35249-22	96906	8	12
DEMM9P8	71466	20	18	MS35240-36	96906	9	3
DE4-105	99515	15	20	MS35250-72	96906	9	24
DE4-105	99515	17	13	MS35275-214	96906	14	42
				MS35276-87	96906	3	20
DN9605-37A	17419	8	2	MS35333-71	96906	19	1
DM9606-197P	17419	8	29	MS35333-31	96906	8	31
DM9606-197S	17419	8	10	MS35337-78	96906	10	38
DM9702-197P	17419	14	53	MS35337-79	96906	13	40
DM9702-197S	17419	7	24	MS35337-79	96906	11	16
DS00-37S	17419	9	6	MS35337-79	96906	13	2
DS00-61S	17419	9	20	MS35337-79	96906	18	5
DS07-61P-059	17419	14	52	MS35338-134	96906	14	58
D4-140	95987	15	6				
D500-37-30P1	17419	10	7	MS35489-38	96906	9	34
EL50RC104K	20932	16	7	MS35489-43	96906	10	13
E1-205	11871	12	4	MS35495-93	96906	3	4
E4-105	99515	12	1	MS51957-13	96906	20	31
FC100E	11769	14	22	MS51957-12	96906	20	27
FC111NE	11769	14	23	MS51957-17	96906	20	19
FHL17G	81349	15	29	MS51957-3	96906	14	59
FHL18G2	81349	15	32	MVZ-7	11502	14	21
FD2832V5A	81349	15	30	M39003-01-2283	81349	20	14
GA3-200	72794	4	6	M39003-01-2286	81349	20	12

PART NUMBER	FSCN	FIG. NO.	ITEM NO.	PART NUMBER	FSCN	FIG. NO.	ITEM NO.
M39003-01-2309	81349	20	5	RC20GF2R0J	44655	17	22
M39003-01-2312	81349	20	22	RC20GF2R2J	44655	17	22
M39003-01-2356	81349	20	17	RC20GF2R4J	44655	17	22
M39003-01-2371	81349	20	6	RC20GF2R7J	81349	17	22
M39003-01-2374	81349	20	28				
M39003-01-2377	81349	20	29	RC20GF4R7J	81349	12	10
M39014-02-4403	81349	20	30	RC20GF682J	81349	12	16
M39018-01-0136	81349	20	3	RC32GF103J	81349	15	22
M39022-01-1141	81349	20	23	RC32GF223J	81349	12	9
M4FS	06288	11	3	RC42GF102J	81349	12	17
MS757-21-004	81349	20	1	RC42GF154J	81349	14	24
NAJ1-048	72962	8	18	RC42GF164J	81349	14	24
NAS1395C08L	80205	7	7	RC42GF184J	81349	14	24
NAS1395C08L	80205	9	39	RC42GF204J	81349	14	24
NAS1395C4L	80205	8	23	RC42GF224J	81349	12	11
NAS1465-056-12C	80205	3	23	RC42GF224J	81349	14	27
NAS42DD6-20	80205	13	8	RC42GF244J	81349	14	24
N3	06229	3	24	RC42GF274J	81349	14	24
PCA11P3	49956	16	11	RC42GF304J	81349	14	24
PCA11R01	11769	15	8	RC42GF331J	81349	17	21
PCA11R02	17357	17	12	RC42GF334J	81349	14	24
PCA17R02	17357	16	12	RC42GF820J	81349	17	19
PC3 1-2	72794	4	19	RJ24CW503	81349	21	5
PES3A	78118	13	29	RST-SM38TUR	98291	15	21
PF3 1-2-38	72794	4	21	RSTSM38TUR	98291	14	55
PM6	04009	20	16	RT22C2W103	81349	17	33
PS3 1-2	72794	4	20	RT22C2WZ03	81349	16	23
RCR07G101JS	81349	21	3	RW56LV502	81349	12	12
RCR07G102JS	81349	21	4	RW67V151	81349	16	39
RCR07G103JS	81349	21	2	RW68V182	81349	21	17
RCR07G122JS	81349	21	11	RW78U1000F	81349	21	10
RCR07G123JS	81349	21	13	R4-40X1-2	97539	9	4
RCR07G124JS	81349	21	14	R8-32X7-16	97539	7	3
RCR07G222JS	81349	21	7	R8-32X9-16	97539	8	34
RCR07G272JS	81349	21	9				
RCR07G273JS	81349	21	8				
RCR07G303JS	81349	21	6	SST1	06383	2	7
RCR07G562JS	81349	21	16	SST1	06383	12	26
RCR07G823JS	81349	21	15	SST2	06383	12	22
RCR20G563JS	81349	21	12	STI-4-28X-8	97539	7	22
RCR42G391JS	81349	21	1	S21984-30	96067	7	25
RC07GF101J	81349	16	44	S3-150	72794	3	22
RC07GF102J	81349	16	37	S3-175	72794	4	12
RC07GF102J	81349	17	24	TE401-02	72982	15	35
RC07GF103J	81349	16	27	TW516-25	08289	19	5
RC07GF103J	81349	17	20	VHC250-35S-CE1	98003	3	2
RC07GF105J	81349	16	32	WD22P6	81312	17	11
RC07GF122J	81349	16	41	WD22S	81312	15	15
RC07GF123J	81349	16	42	X5133-9	79136	7	19
RC07GF152J	81349	17	23	X951	70485	10	11
RC07GF153J	81349	16	28	YNC120	09922	2	3
RC07GF182J	81349	17	27	Y1C115	09922	2	10
RC07GF221J	81349	16	38	1-4-4	95987	15	7
RC07GF222J	81349	16	25	IN1128A	81349	15	19
RC07GF223J	81349	16	30	IN1733A	81349	14	31
RC07GF272J	44655	17	25	IN2984B	81349	17	7
RC07GF272J	81349	16	35	IN3035B	81349	17	10
RC07GF273J	44655	17	29	IN3612	81349	22	5
RC07GF273J	81349	16	45	IN3826A	81349	16	9
RC07GF332J	44655	17	32	IN3827A	81349	17	8
RC07GF332J	81349	16	22	IN4151	80131	12	6
RC07GF333J	44655	17	30	IN4969	81349	22	6
RC07GF333J	81349	16	40	IN645	81349	11	6
RC07GF391J	81349	16	29	IN645	81349	15	16
				IN645	81349	16	10
RC07GF471J	81349	16	26	IN645	81349	17	9
RC07GF472J	81349	16	24	IN645	81349	22	1
RC07GF473J	44655	17	26	IN649	81349	15	18
RC07GF473J	81349	16	33	IN753A	81349	22	3
RC07GF474J	44655	17	31	IN759A	81349	22	4
RC07GF563J	81349	16	43	IN965B	81349	16	8
RC07GF823J	81349	16	36	IN967B	81349	22	2
RC07GF824J	81349	16	31	10030DAP	07047	16	51
RC20GF1R2J	44655	17	22	10030DAP	07047	17	35
RC20GF1R5J	44655	17	22	10036DAP	07047	16	50
RC20GF1R8J	44655	17	22	10044DAP	07047	20	8
				10045DAP	07047	16	49
RC20GF102J	81349	12	14	10045DAP	07047	17	36
				101-326-13	99378	13	9
RC20GF105J	81349	15	17	12NC4284-2-62	72962	14	14

PART NUMBER	FSCM	FIG. NO.	ITEM NO.	PART NUMBER	FSCM	FIG. NO.	ITEM NO.
1249-11	71279	14	6	7140-128-13	11871	13	24
12806	88245	12	19	7140-128-2	11871	13	32
140A601616	89661	1	8	7140-128-3	11871	13	23
17062-37-3051	17419	9	17	7140-129	11871	13	44
17062-37-3051	17419	9	30	7140-132	11871	13	37
17062-37-3051	17419	9	36	7140-133	11871	13	22
2DE1-334E	99515	16	4	7140-136	11871	13	19
2D2E1-104	99515	17	5	7140-137	11871	10	1
2D2E1-105E	99515	16	1	7140-138	11871	10	3
2D2E1-504E	99515	17	3	7140-141-1	11871	13	15
2DE1-604	99515	17	4	7140-141-2	11871	13	5
2N1132	81349	12	7	7140-142-1	11871	13	4
2D2102	82735	16	17	7140-142-2	11871	13	16
2N2222A	81349	16	21	7140-144	11871	13	41
2N2222A	81349	20	10	7140-145	11871	13	21
2N2907A	81349	20	9	7140-150	11871	11	2
2N3507	81349	12	8	7140-161	11871	13	20
2N3653	81345	12	5	7140-162	11871	13	30
2N491	81349	16	13	7140-163-1	11871	13	27
2N690	11871	19	3	7140-163-3	11871	13	38
2N697	81349	17	14	7140-163-1	11871	15	13
2N706	11871	16	14	7140-215-1	11871	4	7
2N706	81349	17	15	7140-215-1	11871	10	42
2N869	81349	16	20	7140-215-2	11871	6	10
2N869	81349	17	16	7148-101	11871	5	8
2N998	15815	16	19	7148-111	11871	10	9
2002-104K	14158	16	2	7148-112	11871	10	33
2002-104K	14158	17	6	7148-113	11871	10	35
2042-103K	14158	16	3	7148-114	11871	9	21
2042-153J	14158	16	5	7148-114-1	11871	9	22
2103	70485	6	7	7148-116	11871	10	24
2104-06-00	78189	10	26	7148-120	11871	7	28
22NKYM04	72962	6	9	7148-123	11871	10	20
22MKTM62	11871	5	9	7148-123-1	11871	10	44
22NIM02	72962	9	32	7148-124	11871	10	21
249-7840M1431	72619	10	19	7148-124-1	11871	10	22
252083	88245	16	46	7148-129	11871	11	5
2599-416C75G	11871	3	7	7148-131	11871	9	38
27MM62	72962	10	17	7148-131-1	11871	9	40
2B-1C	76691	2	6	7148-132	11871	7	6
29A250	79963	12	25	7148-132-1	11871	7	8
3-16-4	95987	10	18	7148-133	11871	7	4
3-160DX1-81DX1-32	88863	14	9	7148-134	11871	7	1
3-4-6	95987	14	11	7148-134-1	11871	7	2
301011-253	80294	15	28	7148-135	11871	9	42
3028L	15818	20	15	7148-135-1	11871	9	43
3107-1	95712	9	14	7148-135-2	11871	7	5
3107-1	95712	9	31	7148-136	11871	8	33
3428L	15818	20	13	7148-137	11871	7	26
3537-16-01	78189	5	13	7148-141-1	11871	9	26
35700	75915	15	34	7148-141-11	11871	9	37
3751-88001	24727	15	4	7148-141-12	11871	9	27
4382-5	06540	14	37	7148-141-2	11871	9	35
495-12-11-016	71785	18	6	7148-143	11871	9	5
5337-231	11871	7	29	7148-144	11871	7	10
6-32X9-16 SL HD	70318	4	27	7148-145	11871	9	25
6001-66CC	91506	20	4	7148-146	11871	9	45
6112-14A	91506	11	12	7148-147	11871	8	3
6003-17A	91506	12	21	7148-149	11871	7	23
6005-1CC	91506	20	24	7148-151	11871	7	13
6005-6CC	91506	20	11	7148-152	11871	7	14
6008-12CC	91506	20	7	7148-154	11871	8	25
6008-36CC	91506	20	21	7148-155	11871	8	24
6024-2CC	91506	20	2	7148-156	11871	8	32
6143SS1032	06540	14	39	7148-157-1	11871	5	1
6151SS2520	06540	10	10	7148-157-3	11871	5	4
				7148-157-5	11871	5	2
				7148-157-7	11871	5	6
6276E-SS2520	06540	10	27	7148-160	11871	19	4
62948-SS1032	06540	14	38	7148-161	11871	8	9
68-1660-26	72962	15	31	7148-163	11871	9	18
681660-40	72962	20	20	7148-164	11871	9	9
68NH02	72962	14	41	7148-165-1	11871	6	1
6965-300	11871	7	15	7148-165-2	11871	6	5
7049-206	11871	4	4	7148-167	11871	8	14
7049-206-1	11871	4	8	7148-171	11871	9	13
7140-119	11871	10	40	7148-171-1	11871	9	16
7140-122-1	11871	13	13	7148-172-1	11871	7	21
7140-127	11871	13	18	7148-174	11871	7	17
7140-128-11	11871	13	33	7148-178	11871	7	20
7140-128-12	11871	13	26				

PART NUMBER	FSCM	FIG. NO.	ITEM NO.	PART NUMBER	FSCM	FIG. NO.	ITEM NO.
7148-178-1	11871	7	16	7148-230	11871	10	4
7148-180-1	11871	6	6	7148-232	11871	6	35
7148-181	11871	14	40	7148-235	11871	14	29
7148-182	11871	6	4	7148-241	11871	3	11
7148-185-1	11871	8	30	7148-245	11871	2	8
7148-185-2	11871	8	5	7148-247	11871	13	3
7148-185-3	11871	8	7	7148-248	11871	17	34
7148-186-1	11871	8	21	7148-250-1	11871	11	17
7148-186-2	11871	8	8	7148-251	11871	11	18
7148-186-3	11871	8	20	7148-252	11871	18	2
7148-187	11871	10	12	7148-253-1	11871	18	1
7148-190-1	11871	3	1	7148-254	11871	14	3
7148-191	11871	3	15	7148-255	11871	11	4
7148-192	11871	3	18	7148-257	11871	9	7
7148-192-1	11871	3	21	7148-266	11871	16	16
7148-193	11871	10	8	7148-271	11871	14	61
7148-194	11871	9	10	7148-272	11871	14	62
7148-194-1	11871	9	12	7148-273	11871	14	43
7148-195-1	11871	10	36	7148-273-1	11871	14	45
7148-195-2	11871	10	32	7148-274-1	11871	14	56
7148-196	11871	12	18	7148-275	11871	14	46
7148-197-1	11871	12	20	7148-276	11871	20	25
7148-198	11871	11	1	7148-276-1	11871	20	26
7148-198-1	11871	11	19	7148-279	11871	14	54
7148-199	11871	10	47	7148-302	11871	4	1
7148-199-1	11871	10	48	7148-303	11871	4	9
7148-200	11871	7	12	7148-303-1	11871	4	10
7148-202	11871	14	14	7148-304	11871	4	16
7148-202-1	11871	15	33	7148-304-1	11871	4	18
7148-202-2	11871	15	27	7148-305	11871	4	26
7148-203	11871	14	4	7148-305-1	11871	4	29
7148-204	11871	15	1	7148-307	11871	4	22
7148-204-10	11871	15	3				
7148-205	11871	15	11	7185-228-2	11871	10	41
7148-205-1	11871	15	12	7185-230	11871	5	3
7148-206	11871	14	48	7185-244	11871	13	12
7148-206-1	11871	14	49	7185-245	11871	13	46
7148-207	11871	14	35	7252-110	11871	13	17
7148-207-1	11871	14	36	7321-276-162	81349	17	20
7148-208	11871	14	34	7321-276-210	11871	17	18
7148-209	11871	14	2	7321-276-213	11871	17	17
7148-210	11871	14	17	7321-474-1	11871	10	23
7148-210	11871	17	38	79NCFHA1-40	11871	15	5
7148-211	11871	17	37	79NCFHA2-40	72962	11	11
7148-212	11871	14	5	79NCFHA2-62	72962	4	17
7148-213	11871	16	47	79NCFHA2-62	72962	10	49
7148-213-1	11871	16	48	79NCFHA2-62	72962	14	50
7148-215	11871	14	32	79NCFHA2-62	72962	15	2
7148-217-1	11871	8	15	79NC1-62	72962	9	11
7148-217-2	11871	8	22	79NH26	72962	8	27
7148-218	11871	8	6	79NH40	72962	10	29
7148-218-1	11871	8	19	79NTE048	72962	3	3
7148-219	11871	8	11	79NTH02	72962	10	43
7148-220	11871	9	1	79NTH04	72962	3	10
7148-221	11871	9	19	79NTH40	72962	8	16
7148-221	11871	9	33	79NTH82	72962	3	16
7148-224	11871	12	23	8215A0440-1C	06540	14	66
7148-225	11871	11	13	8392A0440-10A	06540	14	60
7148-226-1	11871	10	16	850-356-2	11871	9	44
7148-226-2	11871	10	15	9-16-4	95987	15	10
7148-226-3	11871	10	14	9531DA0440-10A	06540	14	44
7148-227	11871	10	30	9724A0440-1C	06540	14	15

LATEST NATIONAL STOCK NUMBER ASSIGNMENTS

STOCK NUMBER	FIG. NO.	ITEM NO.	STOCK NUMBER	FIG. NO.	ITEM NO.
5910-00-010-2810	17	2	5935-00-494-5133	2	5
5910-00-050-5347	12	2	5935-00-494-9000	2	9
5340-00-085-1125	7	7	5940-00-682-9080	15	21
5340-00-085-1125	9	39	5935-00-721-0496	4	13
5905-00-106-9344	12	15	5910-00-725-8814	17	1
5905-00-115-8055	16	34	5961-00-835-4755	12	6
5905-00-141-0591	12	13	5961-00-906-7876	12	5
5905-00-251-7757	11	7	5340-00-959-8205	20	11
5325-00-282-2132	9	28	5340-00-966-3785	8	23
5935-00-308-7669	20	18	5910-00-999-4381	12	4
5961-00-408-0913	16	17	5961-00-999-4625	19	3

LATEST PART NUMBER ASSIGNMENTS

PART NUMBER	FSCM	FIG. NO.	ITEM NO.	PART NUMBER	FSCM	FIG. NO.	ITEM NO.
AN931A12-20	88044	9	28	RCR206101JS	81349	12	15
DE4-1540	99515	12	2	RC206F103JS	81349	12	13
MS3102R2R22-14P	96906	4	13	RC206F270K	81349	11	7
MS39006-09-6552	06001	17	2	SG3106E20-33PSR	77820	2	9
RCR076393JS	81349	16	34	SG3106E20-33SSR	77820	2	5

ADDITIONAL LATEST NATIONAL STOCK NUMBER ASSIGNMENTS

STOCK NUMBER	FIG. NO.	ITEM NO.
5305-00-054-5647	15	14
5305-00-054-6651	7	27
5305-00-054-6651	11	14
5305-00-054-6651	15	23
5305-00-054-6651	18	3

ADDITIONAL LATEST NATIONAL STOCK NUMBER ASSIGNMENTS

PART NUMBER	FSCM	FIG. NO.	ITEM NO.
MS51957-13	96906	15	14
MS51957-27	96906	7	27
MS51957-27	96906	11	14
MS51957-27	96906	15	23
MS51957-27	96906	18	3

RECOMMENDED CHANGES TO EQUIPMENT TECHNICAL MANUALS



SOMETHING WRONG WITH THIS MANUAL?

THEN...JOT DOWN THE DOPE ABOUT IT ON THIS FORM, TEAR IT OUT, FOLD IT AND DROP IT IN THE MAIL!

FROM: (YOUR UNIT'S COMPLETE ADDRESS)

Commander
Stateside Army Depot
ATTN: AMSTA-US
Stateside, N.J. 07703

DATE 10 July 1975

PUBLICATION NUMBER TM 11-5840-340-12	DATE 23 Jan 74	TITLE Radar Set AN/SPC-76
---	-------------------	------------------------------

BE EXACT...PIN-POINT WHERE IT IS				IN THIS SPACE TELL WHAT IS WRONG AND WHAT SHOULD BE DONE ABOUT IT:
PAGE NO.	PARAGRAPH	FIGURE NO.	TABLE NO.	
2-25	2-28			<p>Recommend that the installation antenna alignment procedure be changed throughout to specify a 2° IFF antenna lag rather than 1°.</p> <p>REASON: Experience has shown that with only a 1° lag, the antenna servo system is too sensitive to wind gusting in excess of 27 knots, and has a tendency to rapidly accelerate and decelerate as it hunts, causing strain to the drive train. Hunting is minimized by adjusting the lag to 2° without degradation of operation.</p>
3-10	3-3		3-1	<p>Item 5, Function column. Change "2 db" to "3db."</p> <p>REASON: The adjustment procedure for the TRANS POWER FAULT indicator calls for a 3 db (500 watts) adjustment to light the TRANS POWER FAULT indicator.</p>
5-6	5-8			<p>Add new step f.1 to read, "Replace cover plate removed in step e.1, above."</p> <p>REASON: To replace the cover plate.</p>
		F03		<p>Zone C 3. On J1-2, change "+24 VDC to "+5 VDC."</p> <p>REASON: This is the output line of the 5 VDC power supply. + 24 VDC is the input voltage.</p>

TYPED NAME, GRADE OR TITLE, AND TELEPHONE NUMBER SSG I. M. DeSpirito 999-1776	SIGN HERE: <i>SSG I. M. DeSpirito</i>
--	--

RECOMMENDED CHANGES TO EQUIPMENT TECHNICAL MANUALS



SOMETHING WRONG WITH THIS MANUAL?

THEN... JOT DOWN THE DOPE ABOUT IT ON THIS FORM, TEAR IT OUT, FOLD IT AND DROP IT IN THE MAIL!

FROM: (YOUR UNIT'S COMPLETE ADDRESS)

DATE

PUBLICATION NUMBER

DATE

TITLE

BE EXACT... PIN-POINT WHERE IT IS

IN THIS SPACE TELL WHAT IS WRONG AND WHAT SHOULD BE DONE ABOUT IT:

PAGE NO.

PARA-GRAPH

FIGURE NO.

TABLE NO.

TEAR ALONG DOTTED LINE

TYPED NAME, GRADE OR TITLE, AND TELEPHONE NUMBER

SIGN HERE:

FILL IN YOUR
UNIT'S ADDRESS

FOLD BACK

DEPARTMENT OF THE ARMY

OFFICIAL BUSINESS
PENALTY FOR PRIVATE USE, \$300

POSTAGE AND FEES PAID
DEPARTMENT OF THE ARMY
DOD-314



Commander
US Army Electronics Command
ATTN: DRSEL-MA-Q
Fort Monmouth, New Jersey 07703

TEAR ALONG DOTTED LINE

FOLD BACK

REVERSE OF DA FORM 2020-2 (TEST)

RECOMMENDED CHANGES TO EQUIPMENT TECHNICAL MANUALS



SOMETHING WRONG WITH THIS MANUAL?

THEN...JOT DOWN THE DOPE ABOUT IT ON THIS FORM, TEAR IT OUT, FOLD IT AND DROP IT IN THE MAIL!

FROM: (YOUR UNIT'S COMPLETE ADDRESS)

DATE

PUBLICATION NUMBER

DATE

TITLE

BE EXACT...PIN-POINT WHERE IT IS

IN THIS SPACE TELL WHAT IS WRONG AND WHAT SHOULD BE DONE ABOUT IT:

PAGE NO.

PARA-GRAPH

FIGURE NO.

TABLE NO.

TEAR ALONG DOTTED LINE

TYPED NAME, GRADE OR TITLE, AND TELEPHONE NUMBER

SIGN HERE:

FILL IN YOUR
UNIT'S ADDRESS

FOLD BACK

DEPARTMENT OF THE ARMY

OFFICIAL BUSINESS

PENALTY FOR PRIVATE USE, \$300

POSTAGE AND FEES PAID
DEPARTMENT OF THE ARMY
DOD-314



Commander
US Army Electronics Command
ATTN: DRSEL-MA-Q
Fort Monmouth, New Jersey 07703

FOLD BACK

RECOMMENDED CHANGES TO EQUIPMENT TECHNICAL MANUALS



SOMETHING WRONG WITH THIS MANUAL?

THEN . . . JOT DOWN THE DOPE ABOUT IT ON THIS FORM, TEAR IT OUT, FOLD IT AND DROP IT IN THE MAIL!

FROM: (YOUR UNIT'S COMPLETE ADDRESS)

DATE

PUBLICATION NUMBER

DATE

TITLE

BE EXACT. . . PIN-POINT WHERE IT IS

IN THIS SPACE TELL WHAT IS WRONG AND WHAT SHOULD BE DONE ABOUT IT:

PAGE NO.	PARA-GRAPH	FIGURE NO.	TABLE NO.

IN THIS SPACE TELL WHAT IS WRONG AND WHAT SHOULD BE DONE ABOUT IT:

By Order of the Secretary of the Army:

BERNARD W. ROGERS
General, United States Army
Chief of Staff

Official:

J. C. PENNINGTON
Brigadier General, United States Army
The Adjutant General

Distribution:

To be distributed in accordance with DA Form 12-31, Section VI, Direct and General Support 11-series avionics TMP literature requirements for OV-1A, B, C and OV-1D aircraft.

DEPARTMENT OF THE ARMY
US ARMY AG PUBLICATIONS CENTER
1835 WOODSON ROAD
ST LOUIS MISSOURI 63114

OFFICIAL BUSINESS
PENALTY FOR PRIVATE USE \$300

POSTAGE AND FEES PAID
DEPARTMENT OF THE ARMY
DOD 314

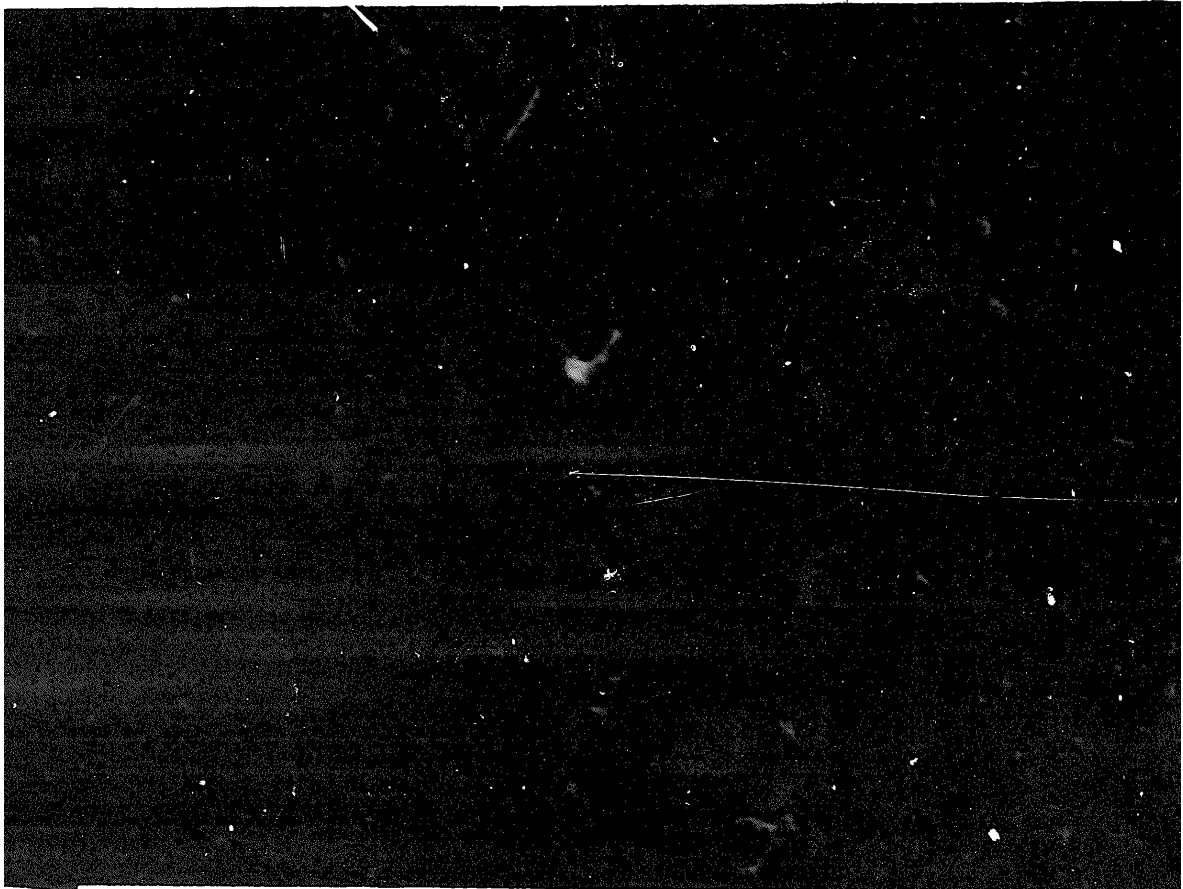


END

03-20-83

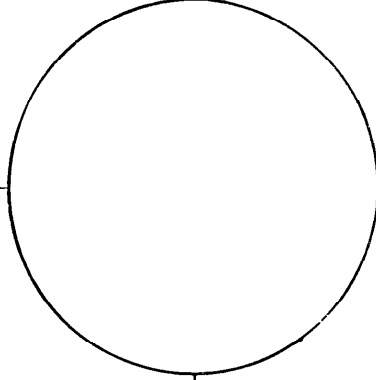
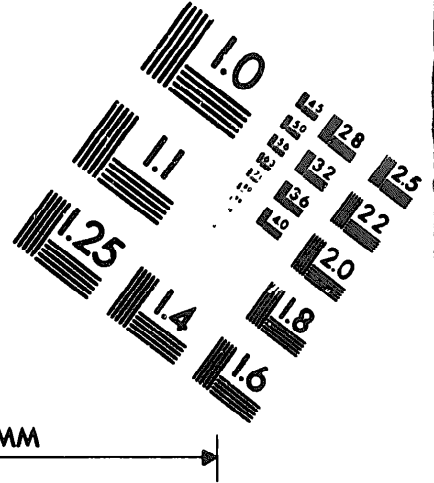
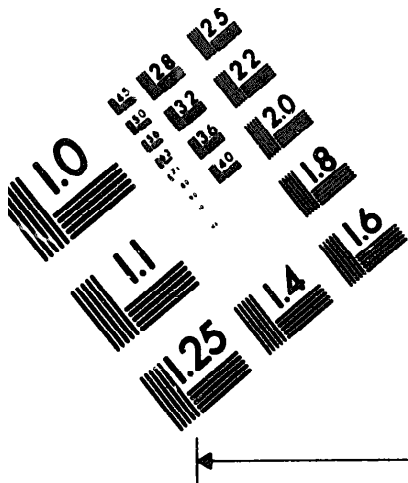
DATE





DEPARTMENT OF THE ARMY

MICROFORM TEST TARGET



10 mm (e= 81 mm)

ABCDEFGHIJKLMNQRSTUWXYZ1234567890
abcdefghijklmnopqrstuvwxyz\$%&/'%# 1/2 1/4 3/4 ---+ x&@*

15 mm (e= 109 mm)

ABCDEFGHIJKLMNQRSTUWXYZ1234567890
abcdefghijklmnopqrstuvwxyz\$%&/'%# 1/2 1/4 3/4 ---+ x&@*

20 mm (e= 137 mm)

ABCDEFGHIJKLMNQRSTUWXYZ
abcdefghijklmnopqrstuvwxyz
1234567890\$%&/'%# 1/2 1/4 3/4 ---+ x&@*

2.5 mm (e= 1.77 mm)

ABCDEFGHIJKLMNQRSTUWXYZ
abcdefghijklmnopqrstuvwxyz
1234567890\$%&/'%# 1/2 1/4 3/4 ---+ x&@*

150 MM

10 mm (e= 81 mm)

ABCDEFGHIJKLMNQRSTUWXYZ1234567890
abcdefghijklmnopqrstuvwxyz\$%&/'%# 1/2 1/4 3/4 ---+ x&@*

15 mm (e= 109 mm)

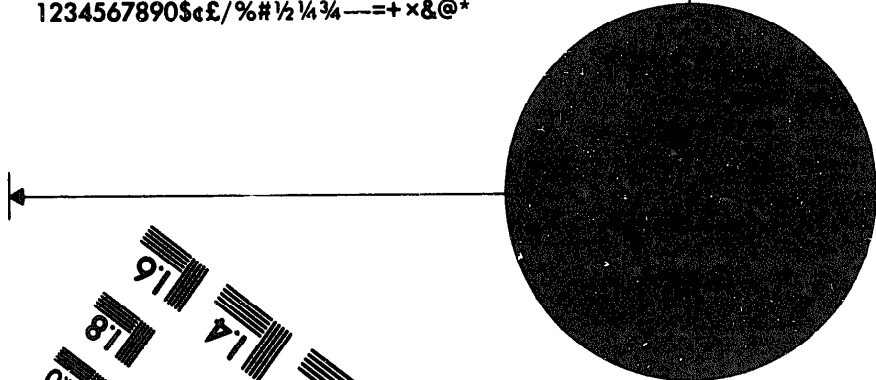
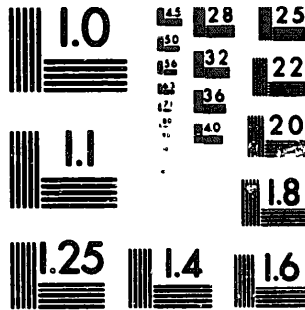
ABCDEFGHIJKLMNQRSTUWXYZ1234567890
abcdefghijklmnopqrstuvwxyz\$%&/'%# 1/2 1/4 3/4 ---+ x&@*

20 mm (e= 137 mm)

ABCDEFGHIJKLMNQRSTUWXYZ
abcdefghijklmnopqrstuvwxyz
1234567890\$%&/'%# 1/2 1/4 3/4 ---+ x&@*

2.5 mm (e= 1.77 mm)

ABCDEFGHIJKLMNQRSTUWXYZ
abcdefghijklmnopqrstuvwxyz
1234567890\$%&/'%# 1/2 1/4 3/4 ---+ x&@*



200 MM

250 MM

